

À des fins de recherche uniquement

Anticorps Monoclonal anti-RHOA

Numéro de catalogue: 66733-1-Ig

Phare

9 Publications



Informations de base

Numéro de catalogue: 66733-1-Ig	Numéro d'acquisition GenBank: BC005976	Méthode de purification: Purification par protéine A
Taille: 150ul, Concentration: 1700 µg/ml by 387 Nanodrop and 1500 µg/ml by Bradford method using BSA as the standard;	Identification du gène (NCBI): Nom complet: ras homolog gene family, member A	CloneNo.: 1B3D7 Dilutions recommandées: WB 1:500-1:2000 IHC 1:50-1:500 IF 1:50-1:500
Hôte: Mouse	MW calculé 22 kDa	
Isotype: IgG1	MW observés: 22 kDa	
Immunogen Catalog Number: AG1141		

Applications

Applications testées:

IF, IHC, WB, ELISA

Demandes citées:

IF, IHC, WB

Spécificité de l'espèce:

Humain, porc, rat, souris

Espèces citées:

Humain, porc

Remarque-IHC: il est suggéré de démasquer l'antigène avec un tampon de TE buffer pH 9,0; (*) A défaut, 'le démasquage de l'antigène peut être effectué avec un tampon citrate pH 6,0.

Contrôles positifs:

WB : cellules HeLa, cellules HEK-293, cellules Jurkat

IHC : tissu de cancer du côlon humain,

IF : cellules HeLa,

Informations générales

RhoA is a member of the Rho family of small GTPases, which cycle between inactive GDP-bound and active GTP-bound states and function as molecular switches in signal transduction cascades. Rho proteins promote reorganization of the actin cytoskeleton and regulate cell shape, attachment, and motility. Overexpression of RhoA is associated with tumor cell proliferation and metastasis. RhoA signalling is critical to many cellular processes including migration, mechanotransduction, and is often disrupted in carcinogenesis.

Publications notables

Autrice	Pubmed ID	Journal	Application
Yu-Yuan Zhang	36259516	J Biol Chem	WB
Zhangya Pu	36224658	Cancer Cell Int	WB
Liu Jie	34093790	J Cancer	WB

Stockage

Stockage:

Stocker à -20°C. Stable pendant un an après l'expédition.

Tampon de stockage:

PBS avec azoture de sodium à 0,02 % et glycérol à 50 % pH 7,3

L'aliquotage n'est pas nécessaire pour le stockage à -20C

*** Les 20ul contiennent 0,1% de BSA.

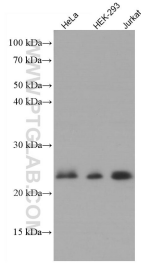
For technical support and original validation data for this product please contact:

T: 1 (888) 4PTGLAB (1-888-478-4522) (toll free in USA), or 1(312) 455-8498 (outside USA)

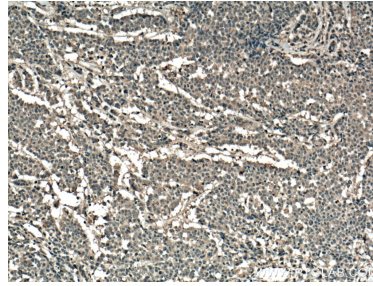
E: proteintech@ptglab.com
W: ptglab.com

This product is exclusively available under Proteintech Group brand and is not available to purchase from any other manufacturer.

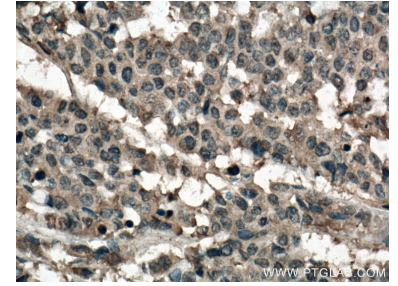
Données de validation sélectionnées



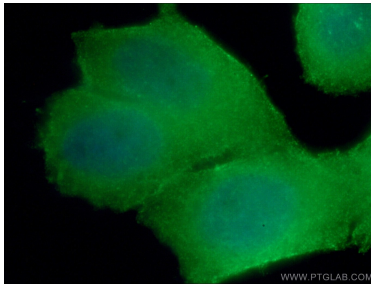
Various lysates were subjected to SDS PAGE followed by western blot with 66733-1-Ig (RHOA antibody) at dilution of 1:1500 incubated at room temperature for 1.5 hours.



Immunohistochemical analysis of paraffin-embedded human colon cancer tissue slide using 66733-1-Ig (RHOA antibody) at dilution of 1:200 (under 10x lens. Heat mediated antigen retrieval with Tris-EDTA buffer (pH 9.0).



Immunohistochemical analysis of paraffin-embedded human colon cancer tissue slide using 66733-1-Ig (RHOA antibody) at dilution of 1:200 (under 40x lens. Heat mediated antigen retrieval with Tris-EDTA buffer (pH 9.0).



Immunofluorescent analysis of (4% PFA) fixed HeLa cells using 66733-1-Ig (RHOA antibody) at dilution of 1:100 and Alexa Fluor 488-Conjugated AffiniPure Goat Anti-Mouse IgG(H+L).