

À des fins de recherche uniquement

# Anticorps Monoclonal anti-IL-1 Beta



Numéro de catalogue: 66737-1-Ig

Phare

58 Publications

## Informations de base

|  |   |   |
|--|---|---|
| Numéro de catalogue:<br>66737-1-Ig   | Numéro d'acquisition GenBank:<br>BC008678 | Méthode de purification:<br>Purification par protéine A       |
| Taille:<br>150ul , Concentration: 1000 µg/ml by<br>Bradford method using BSA as the<br>standard; | Identification du gène (NCBI):<br>3553    | CloneNo.:<br>2A1B4  |
| Hôte:<br>Mouse   | Nom complet:<br>interleukin 1, beta       | Dilutions recommandées:<br>WB 1:1000-1:6000<br>IHC 1:50-1:500 |
| Isotype:<br>IgG1   | MW calculé:<br>269 aa, 31 kDa             |   |
| Immunogen Catalog Number:<br>AG26030   | MW observés:<br>35 kDa                    |   |

## Applications

### Applications testées:

FC, IHC, WB, ELISA

### Demandes citées:

Cell treatment, ELISA, IF, IHC, IP, WB

### Spécificité de l'espèce:

Humain

### Espèces citées:

bovin, Humain

**Remarque-IHC: il est suggéré de démasquer l'antigène avec un tampon de TE buffer pH 9,0; (\*) A défaut, 'le démasquage de l'antigène peut être 'effectué avec un tampon citrate pH 6,0.**

### Contrôles positifs:

WB : cellules A431, cellules MG U-87

IHC : tissu de cancer du poumon humain, tissu de cancer de la peau humain

## Informations générales

Interleukin-1 is a pro-inflammatory cytokine with multiple biological effects. The IL-1 gene family encodes three proteins: IL-1 $\alpha$ , IL-1 $\beta$  and their naturally occurring inhibitor IL-1RN. IL-1 Beta(IL-1 $\beta$ ), mainly produced by blood monocytes and tissue macrophages, has been implicated in mediating both acute and chronic inflammation. IL-1 $\beta$  is known to be involved in a variety of cellular activities, including cell proliferation, differentiation and apoptosis. IL-1 $\beta$  is emerging as a key mediator of carcinogenesis that characterizes host-environment interactions. Human IL-1 $\beta$  is synthesized as a 31 kDa precursor. To gain activity, the precursor must be cleaved by caspase-1 between Asp116 and Ala117 to yield a 17 kDa mature form.

## Publications notables

| Autrice        | Pubmed ID | Journal               | Application    |
|----------------|-----------|-----------------------|----------------|
| Jinghong Zhong | 36177510  | J Biochem Mol Toxicol | Cell treatment |
| Yingying Wang  | 36174863  | Int J Biol Macromol   | WB             |
| Yuan Gao       | 34630116  | Front Pharmacol       | WB,ELISA       |

## Stockage

### Stockage:

Stocker à -20°C. Stable pendant un an après l'expédition.

### Tampon de stockage:

PBS avec azoture de sodium à 0,02 % et glycérol à 50 % pH 7,3

L'aliquoteage n'est pas nécessaire pour le stockage à -20C

\*\*\* Les 20ul contiennent 0,1% de BSA.

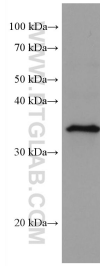
For technical support and original validation data for this product please contact:

T: 1 (888) 4PTGLAB (1-888-478-4522) (toll free in USA), or 1(312) 455-8498 (outside USA)

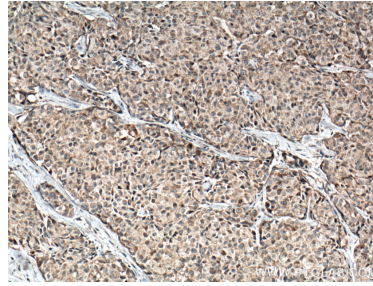
E: proteintech@ptglab.com  
W: ptglab.com

This product is exclusively available under Proteintech Group brand and is not available to purchase from any other manufacturer.

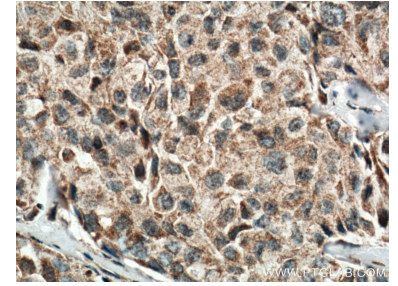
## Données de validation sélectionnées



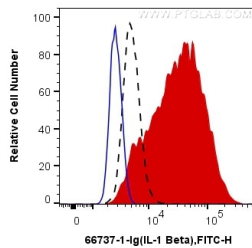
A431 cells were subjected to SDS PAGE followed by western blot with 66737-1-Ig (IL-1 Beta antibody) at dilution of 1:4000 incubated at room temperature for 1.5 hours.



Immunohistochemical analysis of paraffin-embedded human lung cancer tissue slide using 66737-1-Ig (IL1 beta antibody) at dilution of 1:200 (under 10x lens. Heat mediated antigen retrieval with Tris-EDTA buffer (pH 9.0).



Immunohistochemical analysis of paraffin-embedded human lung cancer tissue slide using 66737-1-Ig (IL1 beta antibody) at dilution of 1:200 (under 40x lens. Heat mediated antigen retrieval with Tris-EDTA buffer (pH 9.0).



1X10<sup>6</sup> THP-1 cells untreated (dashed lines), LPS treated (red) were intracellularly stained with 0.4 ug Anti-Human IL-1 Beta (66737-1-Ig, Clone:2A1B4) and CoraLite®488-Conjugated AffiniPure Goat Anti-Mouse IgG(H+L) at dilution 1:1000, or 0.4 ug Control Antibody (blue). Cells were fixed with 4% PFA and permeabilized with Flow Cytometry Perm Buffer (PF00011-C).