

À des fins de recherche uniquement

Anticorps Monoclonal anti-SRF

Numéro de catalogue: 66742-1-Ig

Phare

1 Publications



Informations de base

Numéro de catalogue: 66742-1-Ig	Numéro d'acquisition GenBank: BC048211	Méthode de purification: Purification par protéine A
Taille: 150ul, Concentration: 1800 µg/ml by Nanodrop and 1000 µg/ml by Bradford method using BSA as the standard;	Identification du gène (NCBI): 6722	CloneNo.: 1G8F4
Hôte: Mouse	Nom complet: serum response factor (c-fos serum response element-binding transcription factor)	Dilutions recommandées: WB 1:2000-1:10000 IF 1:200-1:800
Isotype: IgG2a	MW calculé 508 aa, 52 kDa	
Immunogen Catalog Number: AG10386		

Applications

Applications testées:

IF, WB, ELISA

Demandes citées:

WB

Spécificité de l'espèce:

Humain, rat, souris

Espèces citées:

souris

Contrôles positifs:

WB : cellules HeLa, cellules HEK-293, cellules HepG2,
cellules Jurkat, cellules MCF-7, cellules RAW 264.7

IF : cellules HepG2,

Informations générales

Serum response factor (SRF) is a transcription factor that binds the serum response element (SRE), a sequence that mediates the transient response of many cellular genes to growth stimulation. SRF is required for cardiac differentiation and maturation due to the role in cardiac cell growth and muscle gene regulation. The full-length SRF protein is 67 kDa and molecular weight of cleaved fragment is 50 kDa and 20 kDa (PMID: 21769134).

Publications notables

Autrice	Pubmed ID	Journal	Application
Ni Zeng	34786209	Mol Ther Nucleic Acids	WB

Stockage

Stockage:

Stocker à -20°C. Stable pendant un an après l'expédition.

Tampon de stockage:

PBS avec azote de sodium à 0,02 % et glycérol à 50 % pH 7,3

L'aliquotage n'est pas nécessaire pour le stockage à -20C

*** Les 20ul contiennent 0,1% de BSA.

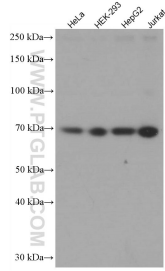
For technical support and original validation data for this product please contact:

T: 1 (888) 4PTGLAB (1-888-478-4522) (toll free
in USA), or 1(312) 455-8498 (outside USA)

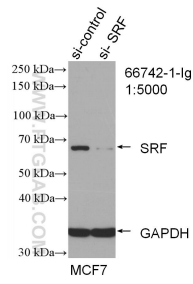
E: proteintech@ptglab.com
W: ptglab.com

This product is exclusively available under Proteintech Group brand and is not available to purchase from any other manufacturer.

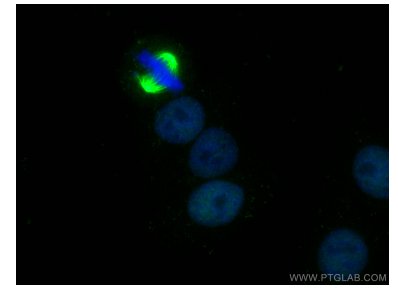
Données de validation sélectionnées



Various lysates were subjected to SDS PAGE followed by western blot with 66742-1-Ig (SRF antibody) at dilution of 1:5000 incubated at room temperature for 1.5 hours.



WB result of SRF antibody (66742-1-Ig; 1:5000; incubated at room temperature for 1.5 hours) with sh-Control and sh-SRF transfected MCF-7 cells.



Immunofluorescent analysis of (4% PFA) fixed HepG2 cells using SRF antibody (66742-1-Ig, Clone: 1G8F4) at dilution of 1:400 and CoraLite®488-Conjugated AffiniPure Goat Anti-Mouse IgG(H+L).