

À des fins de recherche uniquement

# Anticorps Monoclonal anti-PLA2G4D

Numéro de catalogue: 66752-1-Ig



## Informations de base

Numéro de catalogue: 66752-1-Ig	Numéro d'acquisition GenBank: BC034571	Méthode de purification: Purification par protéine G
Taille: 150ul, Concentration: 1800 µg/ml by Nanodrop and 1000 µg/ml by Bradford method using BSA as the standard;	Identification du gène (NCBI): 283748	CloneNo.: 2E2A10
Hôte: Mouse	Nom complet: phospholipase A2, group IVD (cytosolic)	Dilutions recommandées: WB 1:1000-1:4000 IF 1:200-1:800
Isotype: IgG1	MW calculé 818 aa, 92 kDa	
Immunogen Catalog Number: AG4178	MW observés: 92 kDa	

## Applications

Applications testées: IF, WB, ELISA	Contrôles positifs: WB : cellules HepG2, cellules L02, cellules SMMC-7721 IF : cellules HepG2,
Spécificité de l'espèce: Humain	

## Informations générales

PLA2G4D (Cytosolic phospholipase A2 delta) belongs to the phospholipase A2 enzyme family, catalyzes the hydrolysis of glycerophospholipids at the sn-2 position and then liberate free fatty acids and lysophospholipids. PLA2G4D expression is specifically upregulated in the upper epidermis of patients with inflammatory skin diseases (PMID:14709560).

## Stockage

Stockage:  
Stocker à -20°C. Stable pendant un an après l'expédition.  
Tampon de stockage:  
PBS avec azoture de sodium à 0,02 % et glycérol à 50 % pH 7,3  
L'aliquotage n'est pas nécessaire pour le stockage à -20C

\*\*\* Les 20ul contiennent 0,1% de BSA.

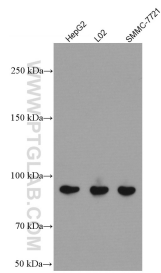
For technical support and original validation data for this product please contact:

T: 1 (888) 4PTGLAB (1-888-478-4522) (toll free  
in USA), or 1(312) 455-8498 (outside USA)

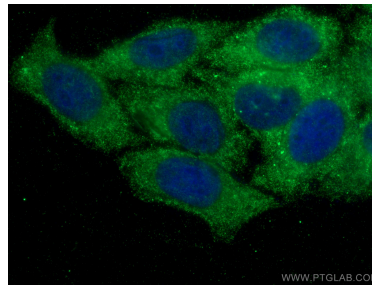
E: proteintech@ptglab.com  
W: ptglab.com

This product is exclusively available under Proteintech Group brand and is not available to purchase from any other manufacturer.

## Données de validation sélectionnées



Various lysates were subjected to SDS PAGE followed by western blot with 66752-1-Ig (PLA2G4D antibody) at dilution of 1:3000 incubated at room temperature for 1.5 hours.



Immunofluorescent analysis of (-20°C Ethanol) fixed HepG2 cells using PLA2G4D antibody (66752-1-Ig, Clone: 2E2A10) at dilution of 1:400 and CoraLite®488-Conjugated AffiniPure Goat Anti-Mouse IgG(H+L).