

À des fins de recherche uniquement

Anticorps Monoclonal anti-BACH1

Numéro de catalogue: 66762-1-Ig

Phare

2 Publications



Informations de base

Numéro de catalogue: 66762-1-Ig	Numéro d'acquisition GenBank: BC063307	Méthode de purification: Purification par protéine G
Taille: 150ul, Concentration: 1400 µg/ml by Nanodrop and 1000 µg/ml by Bradford method using BSA as the standard;	Identification du gène (NCBI): 571	CloneNo.: 2D12A4
Hôte: Mouse	Nom complet: BTB and CNC homology 1, basic leucine zipper transcription factor 1	Dilutions recommandées: WB 1:1000-1:6000 IHC 1:50-1:500
Isotype: IgG1	MW calculé: 82 kDa	
Immunogen Catalog Number: AG6011	MW observés: 100-110 kDa	

Applications

Applications testées:

IHC, WB, ELISA

Demandes citées:

IF, WB

Spécificité de l'espèce:

Humain, Lapin, porc, rat, souris

Espèces citées:

Humain, souris

Remarque-IHC: il est suggéré de démasquer l'antigène avec un tampon de TE buffer pH 9,0; (*) A défaut, 'le démasquage de l'antigène peut être effectué avec un tampon citrate pH 6,0.

Contrôles positifs:

WB : cellules HeLa, cellules HEK-293, cellules HSC-T6, cellules Jurkat, cellules K-562, cellules Raji, tissu cérébral de lapin, tissu cérébral de porc, tissu cérébral de rat, tissu cérébral de souris

IHC : tissu de cancer du poumon humain,

Informations générales

BTB and CNC homology 1, basic leucine zipper transcription factor 1(BACH1) is a heme-regulated transcriptional regulator that acts as a repressor or activator and a member of the AP-1 superfamily. MafK belongs to the small Maf family that can function as transcriptional activators or repressors depending on the proteins with which they form heterodimers. BACH1 has crucial roles in both stress responses and transformation by H-RasV12. The molecular weight of expected mobility Bach1 is 100-110 kDa.

Publications notables

Autrice	Pubmed ID	Journal	Application
Kenshiro Takemoto	36178067	Cancer Sci	WB
Hao Qin	37405911	Cell Rep	WB,IF

Stockage

Stockage:

Stocker à -20°C. Stable pendant un an après l'expédition.

Tampon de stockage:

PBS avec azoture de sodium à 0,02 % et glycérol à 50 % pH 7,3

L'aliquotage n'est pas nécessaire pour le stockage à -20C

*** Les 20ul contiennent 0,1% de BSA.

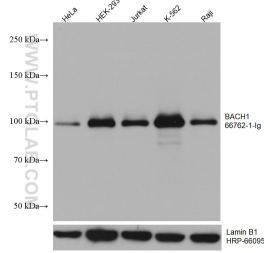
For technical support and original validation data for this product please contact:

T: 1 (888) 4PTGLAB (1-888-478-4522) (toll free in USA), or 1(312) 455-8498 (outside USA)

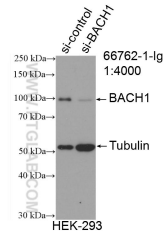
E: proteintech@ptglab.com
W: ptglab.com

This product is exclusively available under Proteintech Group brand and is not available to purchase from any other manufacturer.

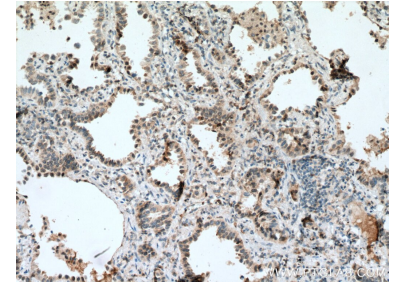
Données de validation sélectionnées



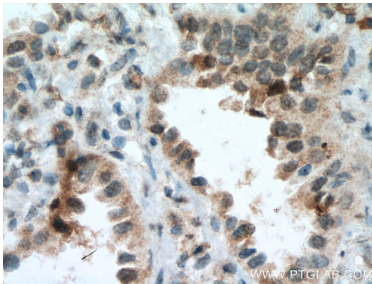
Various lysates were subjected to SDS PAGE followed by western blot with 66762-1-Ig (BACH1 antibody) at dilution of 1:3000 incubated at room temperature for 1.5 hours. The membrane was stripped and reblotted with HRP-conjugated Lamin B1 Monoclonal antibody (HRP-66095) as loading control.



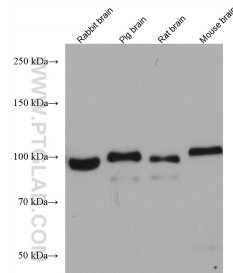
WB result of BACH1 antibody (66762-1-Ig; 1:4000; incubated at room temperature for 1.5 hours) with sh-Control and sh-BACH1 transfected HEK-293 cells.



Immunohistochemical analysis of paraffin-embedded human lung cancer tissue slide using 66762-1-Ig (BACH1 antibody) at dilution of 1:100 (under 10x lens. Heat mediated antigen retrieval with Tris-EDTA buffer (pH 9.0).



Immunohistochemical analysis of paraffin-embedded human lung cancer tissue slide using 66762-1-Ig (BACH1 antibody) at dilution of 1:100 (under 40x lens. Heat mediated antigen retrieval with Tris-EDTA buffer (pH 9.0).



Various lysates were subjected to SDS PAGE followed by western blot with 66762-1-Ig (BACH1 antibody) at dilution of 1:3000 incubated at room temperature for 1.5 hours.