

À des fins de recherche uniquement

# Anticorps Monoclonal anti-CKB

Numéro de catalogue: 66764-1-Ig

Phare

1 Publications



## Informations de base

<b>Numéro de catalogue:</b> 66764-1-Ig	<b>Numéro d'acquisition GenBank:</b> BC001190	<b>Méthode de purification:</b> Purification par protéine A
<b>Taille:</b> 150ul, Concentration: 1300 µg/ml by Nanodrop and 1000 µg/ml by Bradford method using BSA as the standard;	<b>Identification du gène (NCBI):</b> 1152	<b>CloneNo.:</b> 2B7C3
<b>Hôte:</b> Mouse	<b>Nom complet:</b> creatine kinase, brain	<b>Dilutions recommandées:</b> WB 1:10000-1:50000 IHC 1:500-1:2000
<b>Isotype:</b> IgG2a	<b>MW calculé:</b> 43 kDa	
<b>Immunogen Catalog Number:</b> AG7933	<b>MW observés:</b> 43 kDa	

## Applications

<b>Applications testées:</b> IHC, WB, ELISA	<b>Contrôles positifs:</b> WB : cellules HEK-293, cellules HeLa IHC : tissu cérébral de souris,
<b>Demandes citées:</b> WB	
<b>Spécificité de l'espèce:</b> Humain, souris	
<b>Espèces citées:</b> Humain	

**Remarque-IHC: il est suggéré de démasquer l'antigène avec un tampon de TE buffer pH 9,0; (\*) A défaut, le démasquage de l'antigène peut être effectué avec un tampon citrate pH 6,0.**

## Informations générales

CKBB, also named as B-CK and CKB, is a member of the ATP:guanido phosphotransferase protein family. It is a cytoplasmic enzyme involved in energy homeostasis. CKBB reversibly catalyzes the transfer of phosphate between ATP and various phosphogens such as creatine phosphate. It acts as a homodimer in brain as well as in other tissues, and as a heterodimer with a similar muscle isozyme in heart. CK isoenzymes play a central role in energy transduction in tissues with large, fluctuating energy demands, such as skeletal muscle, heart, brain and spermatozoa. CK MB consists of a dimer of nonidentical chains. With MM being the major form in skeletal muscle and myocardium, MB existing in myocardium, and BB existing in many tissues, especially brain.

## Publications notables

Autrice	Pubmed ID	Journal	Application
Jiale Zhu	35513225	Pharmacol Res	WB

## Stockage

**Stockage:**  
Stocker à -20°C. Stable pendant un an après l'expédition.  
**Tampon de stockage:**  
PBS avec azoture de sodium à 0,02 % et glycérol à 50 % pH 7,3  
L'aliquotage n'est pas nécessaire pour le stockage à -20C

\*\*\* Les 20ul contiennent 0,1% de BSA.

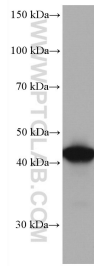
For technical support and original validation data for this product please contact:

T: 1 (888) 4PTGLAB (1-888-478-4522) (toll free in USA), or 1(312) 455-8498 (outside USA)

E: proteintech@ptglab.com  
W: ptglab.com

This product is exclusively available under Proteintech Group brand and is not available to purchase from any other manufacturer.

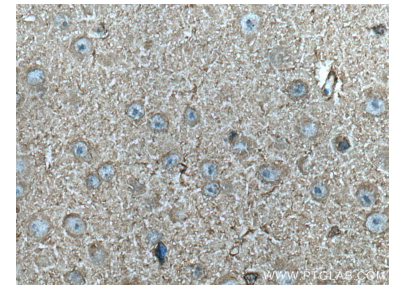
## Données de validation sélectionnées



HEK-293 cells were subjected to SDS PAGE followed by western blot with 66764-1-Ig (CKB antibody) at dilution of 1:10000 incubated at room temperature for 1.5 hours.



Immunohistochemical analysis of paraffin-embedded mouse brain tissue slide using 66764-1-Ig (CKB antibody) at dilution of 1:1000 (under 10x lens). Heat mediated antigen retrieval with Tris-EDTA buffer (pH 9.0).



Immunohistochemical analysis of paraffin-embedded mouse brain tissue slide using 66764-1-Ig (CKB antibody) at dilution of 1:1000 (under 40x lens). Heat mediated antigen retrieval with Tris-EDTA buffer (pH 9.0).