

À des fins de recherche uniquement

# Anticorps Monoclonal anti-PYGL

Numéro de catalogue: 66769-1-Ig **Phare**



## Informations de base

<b>Numéro de catalogue:</b> 66769-1-Ig	<b>Numéro d'acquisition GenBank:</b> BC009895	<b>Méthode de purification:</b> Purification par protéine G
<b>Taille:</b> 150ul, Concentration: 1400 µg/ml by Nanodrop and 1000 µg/ml by Bradford method using BSA as the standard;	<b>Identification du gène (NCBI):</b> 5836	<b>CloneNo.:</b> 1G12D8
<b>Hôte:</b> Mouse	<b>Nom complet:</b> phosphorylase, glycogen, liver	<b>Dilutions recommandées:</b> WB 1:2000-1:10000
<b>Isotype:</b> IgG1	<b>MW calculé</b> 846 aa, 97 kDa	
<b>Immunogen Catalog Number:</b> AG8550	<b>MW observés:</b> 97 kDa	

## Applications

**Applications testées:**  
WB, ELISA  
**Spécificité de l'espèce:**  
Humain

### Contrôles positifs:

WB : cellules HSC-T6, cellules HeLa, cellules HepG2,  
cellules LO2, cellules SMMC-7721

## Informations générales

### Stockage

**Stockage:**  
Stocker à -20°C. Stable pendant un an après l'expédition.  
**Tampon de stockage:**  
PBS avec azoture de sodium à 0,02 % et glycérol à 50 % pH 7,3  
L'aliquotage n'est pas nécessaire pour le stockage à -20C

\*\*\* Les 20ul contiennent 0,1% de BSA.

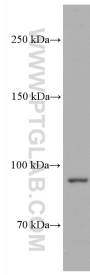
For technical support and original validation data for this product please contact:

T: 1 (888) 4PTGLAB (1-888-478-4522) (toll free  
in USA), or 1(312) 455-8498 (outside USA)

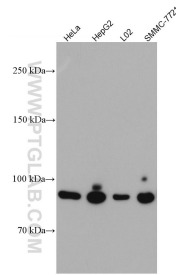
E: [proteintech@ptglab.com](mailto:proteintech@ptglab.com)  
W: [ptglab.com](http://ptglab.com)

This product is exclusively available under Proteintech Group brand and is not available to purchase from any other manufacturer.

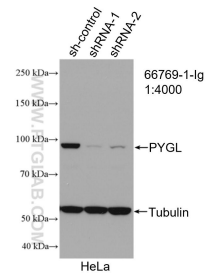
## Données de validation sélectionnées



HSC-T6 cells were subjected to SDS PAGE followed by western blot with 66769-1-Ig (PYGL antibody) at dilution of 1:5000 incubated at room temperature for 1.5 hours.



Various lysates were subjected to SDS PAGE followed by western blot with 66769-1-Ig (PYGL antibody) at dilution of 1:5000 incubated at room temperature for 1.5 hours.



WB result of PYGL antibody (66769-1-Ig; 1:4000; incubated at room temperature for 1.5 hours) with sh-Control and sh-PYGL transfected HeLa cells.