

À des fins de recherche uniquement

Anticorps Monoclonal anti-SLC25A1

Numéro de catalogue: 66771-1-Ig **1 Publications**



Informations de base

Numéro de catalogue: 66771-1-Ig	Numéro d'acquisition GenBank: BC004980	Méthode de purification: Purification par protéine A
Taille: 150ul , Concentration: 1600 µg/ml by Nanodrop and 1000 µg/ml by Bradford method using BSA as the standard;	Identification du gène (NCBI): 6576	CloneNo.: 1F11A3
Hôte: Mouse	Nom complet: solute carrier family 25 (mitochondrial carrier; citrate transporter), member 1	Dilutions recommandées: WB 1:5000-1:50000
Isotype: IgG3	MW calculé 34 kDa	
Immunogen Catalog Number: AG7520	MW observés: 34 kDa	

Applications

Applications testées: WB, ELISA	Contrôles positifs: WB : cellules HEK-293, cellules HSC-T6, cellules Jurkat, cellules NIH/3T3
Demandes citées: IP, WB	
Spécificité de l'espèce: Humain, rat, souris	
Espèces citées: souris	

Informations générales

SLC25A1, also known as CIC or CTP, is a mitochondrial citrate transporter that exports citrate from the mitochondria to the cytosol. SLC25A1 is highly expressed in several tumor types. Recently it has been identified as a novel transcriptional target of mutant p53 and a negative tumor prognostic marker. In addition, defects in SLC25A1 has been found as a cause of combined D-2- and L-2-hydroxyglutaric aciduria. This antibody specifically recognized the endogenous SLC25A1; no protein was detected in cells from subjects containing two alleles with truncating mutations with this antibody. (24681808, 23561848)

Publications notables

Autrice	Pubmed ID	Journal	Application
Weiwei Liu	35585086	Nat Commun	WB,IP

Stockage

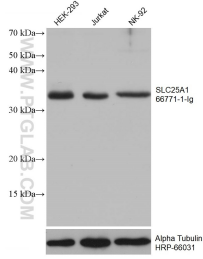
Stockage:
Stocker à -20°C. Stable pendant un an après l'expédition.
Tampon de stockage:
PBS avec azoture de sodium à 0,02 % et glycérol à 50 % pH 7,3
L'aliquotage n'est pas nécessaire pour le stockage à -20C

*** Les 20ul contiennent 0,1% de BSA.

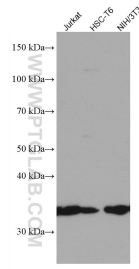
For technical support and original validation data for this product please contact:
T: 1 (888) 4PTGLAB (1-888-478-4522) (toll free in USA), or 1(312) 455-8498 (outside USA)
E: proteintech@ptglab.com
W: ptglab.com

This product is exclusively available under Proteintech Group brand and is not available to purchase from any other manufacturer.

Données de validation sélectionnées



Various lysates were subjected to SDS PAGE followed by western blot with 66771-1-Ig (SLC25A1 antibody) at dilution of 1:10000 incubated at room temperature for 1.5 hours. The membrane was stripped and reblotted with HRP-conjugated Alpha Tubulin Monoclonal antibody (HRP-66031) as loading control.



Various lysates were subjected to SDS PAGE followed by western blot with 66771-1-Ig (SLC25A1 antibody) at dilution of 1:3000 incubated at room temperature for 1.5 hours.