

À des fins de recherche uniquement

Anticorps Monoclonal anti-MFN1

Numéro de catalogue: 66776-1-Ig **8 Publications**



Informations de base

Numéro de catalogue: 66776-1-Ig	Numéro d'acquisition GenBank: BC040557	Méthode de purification: Purification par protéine A
Taille: 150ul, Concentration: 1900 µg/ml by Nanodrop and 1000 µg/ml by Bradford method using BSA as the standard;	Identification du gène (NCBI): mitofusin 1	CloneNo.: 3F11C11
Hôte: Mouse	Nom complet: mitofusin 1	Dilutions recommandées: WB 1:2000-1:10000 IHC 1:500-1:2000 IF 1:400-1:1600
Isotype: IgG2a	MW calculé: 741 aa, 84 kDa	
Immunogen Catalog Number: AG4890	MW observés: 84 kDa	

Applications

Applications testées:

IF, IHC, WB, ELISA

Demandes citées:

IF, IHC, WB

Spécificité de l'espèce:

Humain, rat, souris

Espèces citées:

Humain, porc, rat, souris

Remarque-IHC: il est suggéré de démasquer l'antigène avec un tampon de TE buffer pH 9,0; (*) A défaut, 'le démasquage de l'antigène peut être 'effectué avec un tampon citrate pH 6,0.

Contrôles positifs:

WB : cellules HepG2, cellules HSC-T6, cellules Jurkat, cellules K-562, cellules MG U-87, cellules NIH/3T3, cellules PC-3, cellules U-251

IHC : tissu de cancer de la prostate humain, tissu de cancer du côlon humain

IF : cellules HepG2,

Informations générales

Mitofusin-1 (MFN1) is a mediator of mitochondrial fusion. This protein and mitofusin 2 are homologs of the Drosophila protein fuzzy onion (Fzo). Mitofusins are large predicted GTPases located in outer mitochondrial membrane. They are essential for outer membrane fusion by interacting with each other to facilitate mitochondrial targeting. The mitofusins are the first known protein mediator of mitochondrial fusion, and mediate developmentally regulated post-meiotic fusion of mitochondria. Mitofusin 1 and mitofusin 2 are ubiquitinated in a PINK1/parkin-dependent manner upon induction of mitophagy (PMID: 20871098).

Publications notables

Autrice	Pubmed ID	Journal	Application
Jiling Feng	34065886	Molecules	WB
Gee Euhn Choi	33473105	Nat Commun	IF
Fan Wang	35951252	J Mol Histol	IHC

Stockage

Stockage:

Stocker à -20°C. Stable pendant un an après l'expédition.

Tampon de stockage:

PBS avec azoture de sodium à 0,02 % et glycérol à 50 % pH 7,3

L'aliquotage n'est pas nécessaire pour le stockage à -20C

*** Les 20ul contiennent 0,1% de BSA.

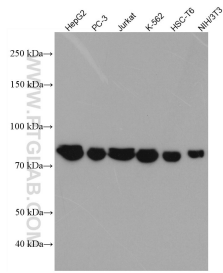
For technical support and original validation data for this product please contact:

T: 1 (888) 4PTGLAB (1-888-478-4522) (toll free in USA), or 1(312) 455-8498 (outside USA)

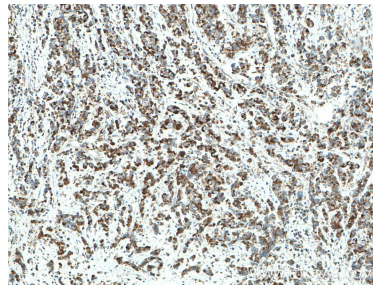
E: proteintech@ptglab.com
W: ptglab.com

This product is exclusively available under Proteintech Group brand and is not available to purchase from any other manufacturer.

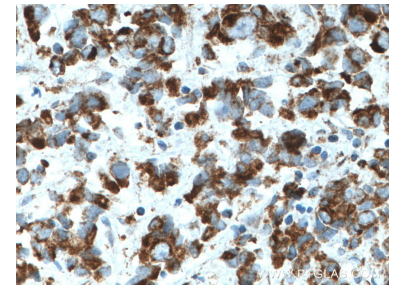
Données de validation sélectionnées



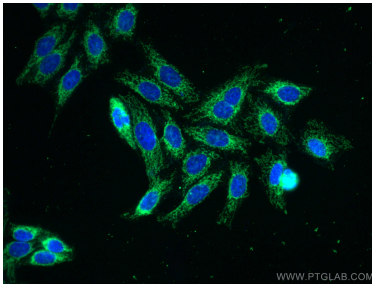
Various lysates were subjected to SDS PAGE followed by western blot with 66776-1-Ig (MFN1 antibody) at dilution of 1:5000 incubated at room temperature for 1.5 hours.



Immunohistochemical analysis of paraffin-embedded human prostate cancer tissue slide using 66776-1-Ig (MFN1 antibody) at dilution of 1:1000 (under 10x lens. Heat mediated antigen retrieval with Tris-EDTA buffer (pH 9.0).



Immunohistochemical analysis of paraffin-embedded human prostate cancer tissue slide using 66776-1-Ig (MFN1 antibody) at dilution of 1:1000 (under 40x lens. Heat mediated antigen retrieval with Tris-EDTA buffer (pH 9.0).



Immunofluorescent analysis of (4% PFA) fixed HepG2 cells using MFN1 antibody (66776-1-Ig, Clone: 3F11C11) at dilution of 1:800 and CoraLite®488-Conjugated AffiniPure Goat Anti-Mouse IgG(H+L).