

À des fins de recherche uniquement

Anticorps Monoclonal anti-TOM20

Numéro de catalogue: 66777-1-Ig **14 Publications**



Informations de base

Numéro de catalogue: 66777-1-Ig	Numéro d'acquisition GenBank: BC000882	Méthode de purification: Purification par protéine A
Taille: 150ul , Concentration: 1000 µg/ml by Nanodrop;	Identification du gène (NCBI): 9804	CloneNo.: 1D6F5
Hôte: Mouse	Nom complet: translocase of outer mitochondrial membrane 20 homolog (yeast)	Dilutions recommandées: WB 1:5000-1:50000 IHC 1:500-1:2000 IF 1:200-1:800
Isotype: IgG2b	MW calculé 145 aa, 16 kDa	
Immunogen Catalog Number: AG2378	MW observés: 16 kDa	

Applications

Applications testées:
FC, IF, IHC, WB, ELISA

Demandes citées:
IF, WB

Spécificité de l'espèce:
Humain

Espèces citées:
Humain

Contrôles positifs:

WB : cellules HEK-293, cellules HeLa, cellules HepG2,
cellules Jurkat, cellules THP-1

IHC : tissu de cancer du foie humain, tissu de cancer du
sein humain

IF : cellules HepG2,

**Remarque-IHC: il est suggéré de démasquer
l'antigène avec un tampon de TE buffer pH
9,0; (*) À défaut, 'le démasquage de
l'antigène peut être 'effectué avec un
tampon citrate pH 6,0.**

Informations générales

TOM20, also named as KIAA0016, belongs to the Tom20 family. It is a central component of the receptor complex responsible for the recognition and translocation of cytosolically synthesized mitochondrial preproteins. Together with TOM22, TOM20 functions as the transit peptide receptor at the surface of the mitochondrion outer membrane and facilitates the movement of preproteins into the TOM40 translocation pore. TOM20 is characterized as major docking receptors to mediate the recognition by different mechanisms.

Publications notables

Autrice	Pubmed ID	Journal	Application
Lu Lu	36183875	Environ Pollut	IF
Ye Young Shin	34826168	J Pineal Res	IF
Fangli Peng	36374514	Invest Ophthalmol Vis Sci	IF

Stockage

Stockage:

Stocker à -20°C. Stable pendant un an après l'expédition.

Tampon de stockage:

PBS avec azoture de sodium à 0,02 % et glycérol à 50 % pH 7,3

L'aliquotage n'est pas nécessaire pour le stockage à -20C

***** Les 20ul contiennent 0,1% de BSA.**

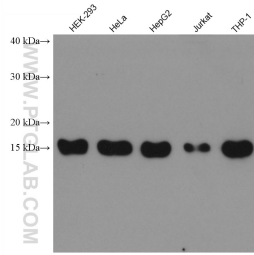
For technical support and original validation data for this product please contact:

T: 1 (888) 4PTGLAB (1-888-478-4522) (toll free
in USA), or 1(312) 455-8498 (outside USA)

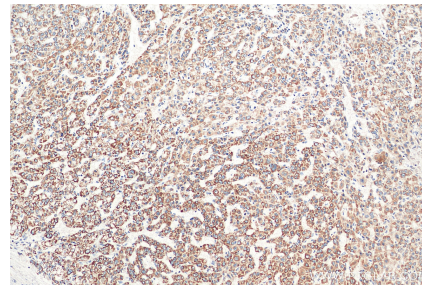
E: proteintech@ptglab.com
W: ptglab.com

**This product is exclusively available under Proteintech
Group brand and is not available to purchase from any
other manufacturer.**

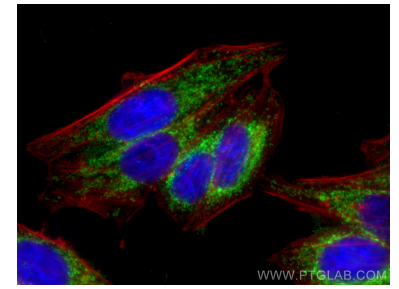
Données de validation sélectionnées



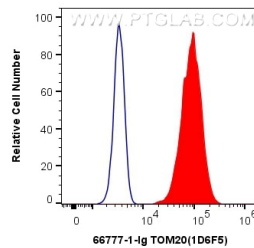
Various lysates were subjected to SDS PAGE followed by western blot with 66777-1-Ig (TOM20 antibody) at dilution of 1:10000 incubated at room temperature for 1.5 hours.



Immunohistochemical analysis of paraffin-embedded human liver cancer tissue slide using 66777-1-Ig (TOM20 antibody) at dilution of 1:1000 (under 10x lens). Heat mediated antigen retrieval with Tris-EDTA buffer (pH 9.0).



Immunofluorescent analysis of (4% PFA) fixed HepG2 cells using TOM20 antibody (66777-1-Ig, Clone: 1D6F5) at dilution of 1:400 and CoraLite®488-Conjugated AffiniPure Goat Anti-Mouse IgG(H+L), CL594-Phalloidin (red).



1×10^6 HeLa cells were intracellularly stained with 0.4 ug Anti-Human TOM20 (66777-1-Ig, Clone:1D6F5) and CoraLite®488-Conjugated AffiniPure Goat Anti-Mouse IgG(H+L) at dilution 1:1000 (red), or 0.4 ug Control Antibody. Cells were fixed with 4% PFA and permeabilized with Flow Cytometry Perm Buffer (PF00011-C).