

À des fins de recherche uniquement

Anticorps Monoclonal anti-Glycophorin A



Numéro de catalogue: 66778-1-Ig

Informations de base

Numéro de catalogue: 66778-1-Ig	Numéro d'acquisition GenBank: BC005319	Méthode de purification: Purification par protéine G
Taille: 150ul , Concentration: 1200 µg/ml by Nanodrop and 1000 µg/ml by Bradford method using BSA as the standard;	Identification du gène (NCBI): 2993	CloneNo.: 2B12G10
Hôte: Mouse	Nom complet: glycophorin A (MNS blood group)	Dilutions recommandées: WB 1:2000-1:6000 IHC 1:10000-1:40000 IF 1:200-1:800
Isotype: IgG1	MW calculé 150 aa, 16 kDa	
Immunogen Catalog Number: AG8635	MW observés: 36-38 kDa	

Applications

Applications testées:
FC, IF, IHC, WB, ELISA

Spécificité de l'espèce:
Humain

Remarque-IHC: il est suggéré de démasquer l'antigène avec un tampon de TE buffer pH 9.0; (*) À défaut, le démasquage de l'antigène peut être effectué avec un tampon citrate pH 6,0.

Contrôles positifs:

WB : tissu sanguin humain,

IHC : tissu placentaire humain, tissu de cancer de l'estomac humain, tissu splénique humain

IF : tissu placentaire humain,

Informations générales

Glycophorin A (GYPA) is the major transmembrane sialoglycoprotein in erythrocytes. It is a dimeric type I transmembrane protein carrying 15 closely clustered O-linked tetrasaccharides capped with sialic acid/N-acetylneuraminic acid (Neu5Ac). This 36 kDa protein represents the major sialoglycoprotein of the red blood cell membrane displaying about one million copies per cell. (PMID: 9490702)

Stockage

Stockage:

Stocker à -20°C. Stable pendant un an après l'expédition.

Tampon de stockage:

PBS avec azoture de sodium à 0,02 % et glycérol à 50 % pH 7,3

L'aliquotage n'est pas nécessaire pour le stockage à -20C

*** Les 20ul contiennent 0,1% de BSA.

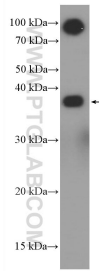
For technical support and original validation data for this product please contact:

T: 1 (888) 4PTGLAB (1-888-478-4522) (toll free in USA), or 1(312) 455-8498 (outside USA)

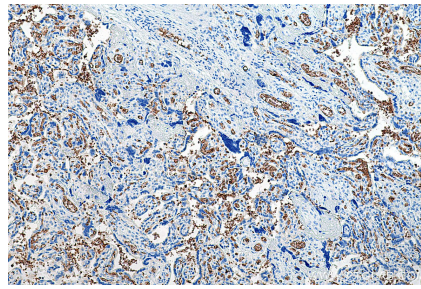
E: proteintech@ptglab.com
W: ptglab.com

This product is exclusively available under Proteintech Group brand and is not available to purchase from any other manufacturer.

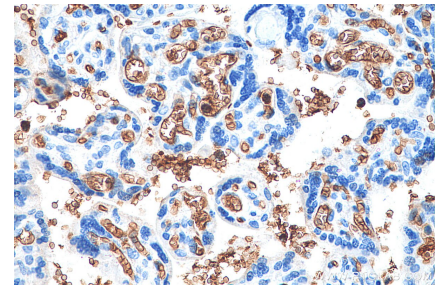
Données de validation sélectionnées



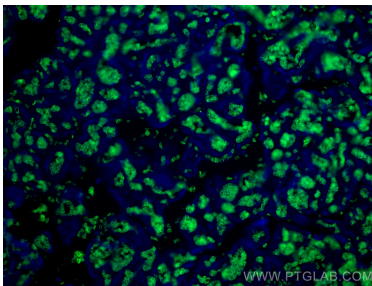
human blood were subjected to SDS PAGE followed by western blot with 66778-1-Ig (GYPA antibody) at dilution of 1:5000 incubated at room temperature for 1.5 hours.



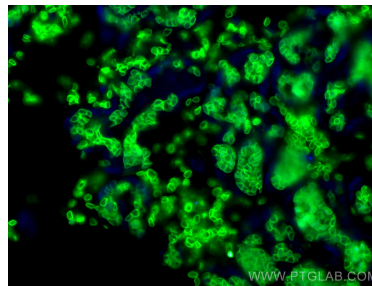
Immunohistochemical analysis of paraffin-embedded human placenta tissue slide using 66778-1-Ig (Glycophorin A antibody) at dilution of 1:20000 (under 10x lens). Heat mediated antigen retrieval with Tris-EDTA buffer (pH 9.0).



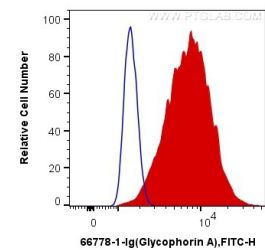
Immunohistochemical analysis of paraffin-embedded human placenta tissue slide using 66778-1-Ig (Glycophorin A antibody) at dilution of 1:20000 (under 40x lens). Heat mediated antigen retrieval with Tris-EDTA buffer (pH 9.0).



Immunofluorescent analysis of (4% PFA) fixed human placenta tissue using Glycophorin A antibody (66778-1-Ig, Clone: 2B12G10) at dilution of 1:400 and CoraLite®488-Conjugated AffiniPure Goat Anti-Mouse IgG(H+L).



Immunofluorescent analysis of (4% PFA) fixed human placenta tissue using Glycophorin A antibody (66778-1-Ig, Clone: 2B12G10) at dilution of 1:400 and CoraLite®488-Conjugated AffiniPure Goat Anti-Mouse IgG(H+L).



1×10^6 K-562 cells were intracellularly stained with 0.4 ug Anti-Human Glycophorin A (66778-1-Ig, Clone:2B12G10) and CoraLite®488-Conjugated AffiniPure Goat Anti-Mouse IgG(H+L) at dilution 1:1000 (red), or 0.4 ug Control Antibody. Cells were fixed with 4% PFA and permeabilized with Flow Cytometry Perm Buffer (PF00011-C).