

À des fins de recherche uniquement

# Anticorps Monoclonal anti-ROCK1

Numéro de catalogue: 66782-1-Ig **3 Publications**



## Informations de base

<b>Numéro de catalogue:</b> 66782-1-Ig	<b>Numéro d'acquisition GenBank:</b> BC113114	<b>Méthode de purification:</b> Purification par protéine G
<b>Taille:</b> 150ul , Concentration: 1100 µg/ml by Nanodrop and 800 µg/ml by Bradford method using BSA as the standard;	<b>Identification du gène (NCBI):</b> 6093	<b>CloneNo.:</b> 3G5E12
<b>Hôte:</b> Mouse	<b>Nom complet:</b> Rho-associated, coiled-coil containing protein kinase 1	<b>Dilutions recommandées:</b> WB 1:1000-1:4000
<b>Isotype:</b> IgG1	<b>MW calculé:</b> 1354 aa, 158 kDa	
<b>Immunogen Catalog Number:</b> AG16317	<b>MW observés:</b> 150-160 kDa	

## Applications

### Applications testées:

WB, ELISA

### Demandes citées:

WB

### Spécificité de l'espèce:

Humain, rat, souris

### Espèces citées:

Humain, souris

### Contrôles positifs:

WB : cellules HeLa, cellules HEK-293, cellules HepG2, cellules HSC-T6, cellules Jurkat, cellules NIH/3T3, cellules RAW 264.7

## Informations générales

ROCK1, also named as p160ROCK and NY-REN-35, belongs to the protein kinase superfamily and AGC Ser/Thr protein kinase family. ROCK1 phosphorylates and activates DAPK3, which then regulates myosin light chain phosphatase through phosphorylation of MYPT1 thereby regulating the assembly of the actin cytoskeleton, cell migration, invasiveness of tumor cells, smooth muscle contraction and neurite outgrowth. ROCK1 is required for centromere positioning and centromere-dependent exit from mitosis. It is necessary for apoptotic membrane blebbing. ROCK1 catalyzes the reaction: ATP + a protein = ADP + a phosphoprotein.

## Publications notables

Autrice	Pubmed ID	Journal	Application
Shuo Yang	36326134	Food Funct	WB
Ranran Dai	31898364	J Cell Biochem	WB
Qian Ban	32913548	Am J Transl Res	WB

## Stockage

### Stockage:

Stocker à -20°C. Stable pendant un an après l'expédition.

### Tampon de stockage:

PBS avec azoture de sodium à 0,02 % et glycérol à 50 % pH 7,3

L'aliquotage n'est pas nécessaire pour le stockage à -20C

\*\*\* Les 20ul contiennent 0,1% de BSA.

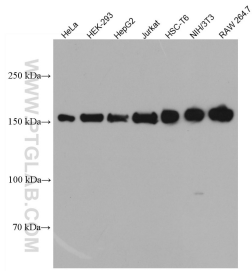
For technical support and original validation data for this product please contact:

T: 1 (888) 4PTGLAB (1-888-478-4522) (toll free in USA), or 1(312) 455-8498 (outside USA)

E: proteintech@ptglab.com  
W: ptglab.com

This product is exclusively available under Proteintech Group brand and is not available to purchase from any other manufacturer.

## Données de validation sélectionnées



Various lysates were subjected to SDS PAGE followed by western blot with 66782-1-Ig (ROCK1 antibody) at dilution of 1:2000 incubated at room temperature for 1.5 hours.