

À des fins de recherche uniquement

Anticorps Monoclonal anti-CFP

Numéro de catalogue: 66788-1-Ig



Informations de base

Numéro de catalogue:	66788-1-Ig	Numéro d'acquisition GenBank:	BC015756	Méthode de purification:	Purification par protéine G
Taille:	150ul, Concentration: 1200 µg/ml by Nanodrop and 1000 µg/ml by Bradford method using BSA as the standard;	Identification du gène (NCBI):	5199	CloneNo.:	1D5A9
Hôte:	Mouse	Nom complet:	complement factor properdin	Dilutions recommandées:	WB 1:1000-1:6000
Isotype:	IgG1	MW calculé:	469 aa, 51 kDa		
Immunogen Catalog Number:	AG9798	MW observés:	50 kDa, 100 kDa, 150 kDa		

Applications

Applications testées:	WB, ELISA	Contrôles positifs:	WB : cellules Jurkat, plasma humain
Spécificité de l'espèce:	Humain, porc, rat		

Informations générales

CFP, also named as Properdin or CFP, is a 469 amino acid protein, which contains 7 TSP type-1 domains. CFP as secreted protein is a positive regulator of the alternate pathway of complement. It binds to and stabilizes the C3- and C5-convertase enzyme complexes. Properdin deficiency poses a significant risk for severe meningococcal infections (PMID: 22229731). Properdin may be novel biomarker for future risk of type 2 diabetes (PMID: 22338105). In plasma, properdin exists as dimers, trimers or tetramers.

Stockage

Stockage:
Stocker à -20°C. Stable pendant un an après l'expédition.
Tampon de stockage:
PBS avec azoture de sodium à 0,02 % et glycérol à 50 % pH 7,3
L'aliquotage n'est pas nécessaire pour le stockage à -20C

***** Les 20ul contiennent 0,1% de BSA**

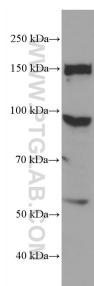
For technical support and original validation data for this product please contact:

T: 1 (888) 4PTGLAB (1-888-478-4522) (toll free in USA), or 1(312) 455-8498 (outside USA)

E: proteintech@ptglab.com
W: ptglab.com

This product is exclusively available under Proteintech Group brand and is not available to purchase from any other manufacturer.

Données de validation sélectionnées



Jurkat cells were subjected to SDS PAGE followed by western blot with 66788-1-Ig (CFP antibody) at dilution of 1:3000 incubated at room temperature for 1.5 hours.