

À des fins de recherche uniquement

Anticorps Monoclonal anti-CDR2L

Numéro de catalogue: 66791-1-Ig

Phare

1 Publications



Informations de base

Numéro de catalogue: 66791-1-Ig	Numéro d'acquisition GenBank: BC047534	Méthode de purification: Purification par protéine G
Taille: 150ul, Concentration: 1400 µg/ml by Nanodrop and 1000 µg/ml by Bradford method using BSA as the standard;	Identification du gène (NCBI): cerebellar degeneration-related protein 2-like	CloneNo.: 2E12D10
Hôte: Mouse	Nom complet: cerebellar degeneration-related protein 2-like	Dilutions recommandées: WB 1:1000-1:6000 IHC 1:200-1:800 IF 1:400-1:1600
Isotype: IgG1	MW calculé: 53 kDa	
Immunogen Catalog Number: AG6139	MW observés: 54 kDa	

Applications

Applications testées:

IF, IHC, WB, ELISA

Demandes citées:

IP

Spécificité de l'espèce:

Humain, rat, souris

Espèces citées:

Humain

Remarque-IHC: il est suggéré de démasquer l'antigène avec un tampon de TE buffer pH 9,0; (*) A défaut, le démasquage de l'antigène peut être effectué avec un tampon citrate pH 6,0.

Contrôles positifs:

WB : cellules U-251, cellules HEK-293, cellules K-562, tissu cérébral de rat, tissu cérébral de souris, tissu cérébral humain

IHC : tissu de cervelet humain,

IF : cellules HEK-293,

Informations générales

Cerebellar degeneration-related protein 2-like (CDR2L), also named as HUMPPA or Paraneoplastic 62 kDa antigen, is a 465 amino acid protein, which belongs to the CDR2 family. CDR2L contains three potential coiled-coil regions. The functions of protein is so far not known. CDR2L is expressed in the brain and localizes in the cytoplasm.

Publications notables

Autrice	Pubmed ID	Journal	Application
Ida Herdlevaer	33009713	Ann Clin Transl Neurol	IP

Stockage

Stockage:

Stocker à -20°C. Stable pendant un an après l'expédition.

Tampon de stockage:

PBS avec azoture de sodium à 0,02 % et glycérol à 50 % pH 7,3

L'aliquotage n'est pas nécessaire pour le stockage à -20C

*** Les 20ul contiennent 0,1% de BSA.

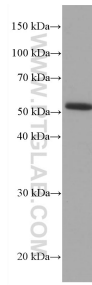
For technical support and original validation data for this product please contact:

T: 1 (888) 4PTGLAB (1-888-478-4522) (toll free in USA), or 1(312) 455-8498 (outside USA)

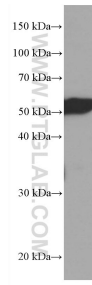
E: proteintech@ptglab.com
W: ptglab.com

This product is exclusively available under Proteintech Group brand and is not available to purchase from any other manufacturer.

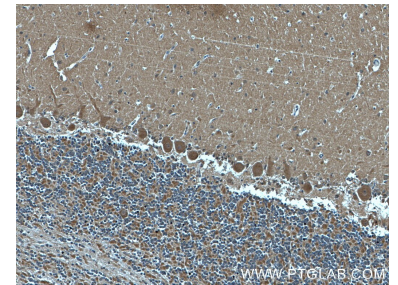
Données de validation sélectionnées



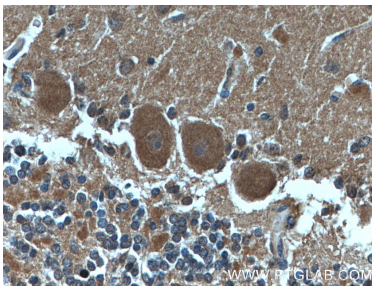
U-251 cells were subjected to SDS PAGE followed by western blot with 66791-1-Ig (CDR2L antibody) at dilution of 1:3000 incubated at room temperature for 1.5 hours.



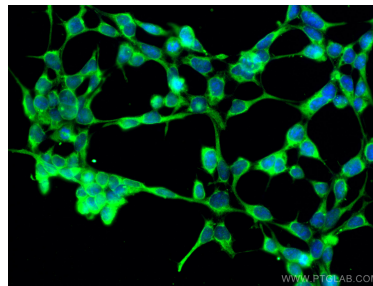
rat brain tissue were subjected to SDS PAGE followed by western blot with 66791-1-Ig (CDR2L antibody) at dilution of 1:3000 incubated at room temperature for 1.5 hours.



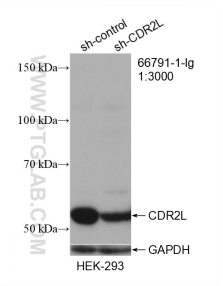
Immunohistochemical analysis of paraffin-embedded human cerebellum tissue slide using 66791-1-Ig (CDR2L antibody) at dilution of 1:400 (under 10x lens).



Immunohistochemical analysis of paraffin-embedded human cerebellum tissue slide using 66791-1-Ig (CDR2L antibody) at dilution of 1:400 (under 40x lens).



Immunofluorescent analysis of (-20°C Ethanol) fixed HEK-293 cells using CDR2L antibody (66791-1-Ig, Clone: 2E12D10) at dilution of 1:800 and CoraLite® 488-Conjugated AffiniPure Goat Anti-Mouse IgG(H+L).



WB result of CDR2L antibody (66791-1-Ig; 1:3000; incubated at room temperature for 1.5 hours) with sh-Control and sh-CDR2L transfected HEK-293 cells.