

À des fins de recherche uniquement

Anticorps Monoclonal anti-COMP

Numéro de catalogue: 66793-1-Ig



Informations de base

Numéro de catalogue: 66793-1-Ig	Numéro d'acquisition GenBank: BC033676	Méthode de purification: Purification par protéine G
Taille: 150ul, Concentration: 1500 µg/ml by Nanodrop and 1000 µg/ml by Bradford method using BSA as the standard;	Identification du gène (NCBI): 1311	CloneNo.: 1D7A6
Hôte: Mouse	Nom complet: cartilage oligomeric matrix protein	Dilutions recommandées: WB 1:500-1:2000
Isotype: IgG1	MW calculé 757 aa, 83 kDa	
Immunogen Catalog Number: AG4575	MW observés: 100-130 kDa	

Applications

Applications testées: WB, ELISA	Contrôles positifs: WB : tissu cartilagineux de porc,
Spécificité de l'espèce: Humain, porc	

Informations générales

COMP is a secreted pentameric glycoprotein built from modular units and belongs to the thrombospondin protein family. COMP is expressed by hypertrophic chondrocytes and osteoblasts during endochondral ossification, and its expression is increased during fracture healing. COMP is involved in the assembly of collagen fibrils and other structural matrix components. COMP interacts with a number of cartilage ECM proteins, including fibronectin, collagen I, II, IX, XII, and XIV, matrilins, as well as proteoglycans such as aggrecan and others. This antibody got 100-130 kDa maybe due to glycosylation.

Stockage

Stockage:
Stocker à -20°C. Stable pendant un an après l'expédition.
Tampon de stockage:
PBS avec azoture de sodium à 0,02 % et glycérol à 50 % pH 7,3
L'aliquotage n'est pas nécessaire pour le stockage à -20C

*** Les 20ul contiennent 0,1% de BSA.

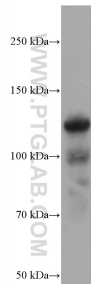
For technical support and original validation data for this product please contact:

T: 1 (888) 4PTGLAB (1-888-478-4522) (toll free
in USA), or 1(312) 455-8498 (outside USA)

E: proteintech@ptglab.com
W: ptglab.com

This product is exclusively available under Proteintech Group brand and is not available to purchase from any other manufacturer.

Données de validation sélectionnées



pig cartilage tissue were subjected to SDS PAGE followed by western blot with 66793-1-Ig (COMP antibody) at dilution of 1:1000 incubated at room temperature for 1.5 hours.