

À des fins de recherche uniquement

# Anticorps Monoclonal anti-Bcl2

Numéro de catalogue: 66799-1-Ig **13 Publications**



## Informations de base

<b>Numéro de catalogue:</b> 66799-1-Ig	<b>Numéro d'acquisition GenBank:</b> NM-009741	<b>Méthode de purification:</b> Purification par protéine A
<b>Taille:</b> 150ul, Concentration: 3000 µg/ml by Nanodrop and 1387 µg/ml by Bradford method using BSA as the standard;	<b>Identification du gène (NCBI):</b> 12043	<b>CloneNo.:</b> 1B5B9
<b>Hôte:</b> Mouse	<b>Nom complet:</b> B-cell leukemia/lymphoma 2	<b>Dilutions recommandées:</b> WB 1:500-1:2000 IF 1:200-1:800
<b>Isotype:</b> IgG1	<b>MW calculé:</b> 26 kDa	
<b>Immunogen Catalog Number:</b> AG24261	<b>MW observés:</b> 26 kDa	

## Applications

### Applications testées:

FC, IF, WB, ELISA

### Demands citées:

IP, WB

### Spécificité de l'espèce:

souris

### Espèces citées:

Humain, rat, souris

### Contrôles positifs:

WB : cellules NIH/3T3, cellules 4T1, cellules C2C12, cellules RAW 264.7, tissu cérébral de souris

IF : cellules NIH/3T3,

## Informations générales

Bcl2 is a member of the B cell lymphoma 2 protein family. Members of this family regulate cell death in multiple cell types and can have either proapoptotic or antiapoptotic activities. The protein encoded by this gene inhibits mitochondrial-mediated apoptosis. This protein is an integral outer mitochondrial membrane protein that functions as part of signaling pathway that controls mitochondrial permeability in response to apoptotic stimuli. This protein may also play a role in neuron cell survival and autophagy. Abnormal expression and chromosomal translocations of this gene are associated with cancer progression in numerous tissues.

## Publications notables

Autrice	Pubmed ID	Journal	Application
Chen Chen	30412827	Redox Biol	
Xiaohua Lei	32400797	Food Funct	WB
Ran Zhang	33979163	J Nat Prod	WB

## Stockage

### Stockage:

Stocker à -20°C. Stable pendant un an après l'expédition.

### Tampon de stockage:

PBS avec azoture de sodium à 0,02 % et glycérol à 50 % pH 7,3

L'aliquotage n'est pas nécessaire pour le stockage à -20C

\*\*\* Les 20ul contiennent 0,1% de BSA.

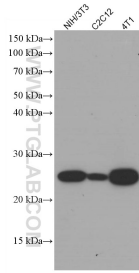
For technical support and original validation data for this product please contact:

T: 1 (888) 4PTGLAB (1-888-478-4522) (toll free in USA), or 1(312) 455-8498 (outside USA)

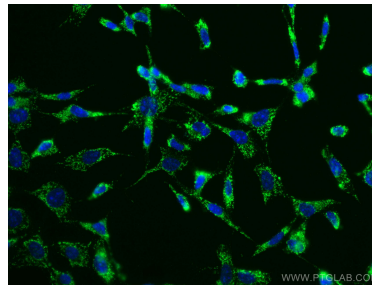
E: proteintech@ptglab.com  
W: ptglab.com

This product is exclusively available under Proteintech Group brand and is not available to purchase from any other manufacturer.

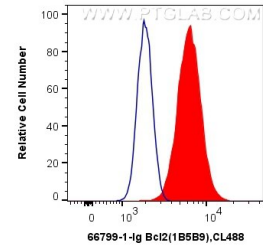
## Données de validation sélectionnées



Various lysates were subjected to SDS PAGE followed by western blot with 66799-1-Ig (Bcl2 antibody) at dilution of 1:1400 incubated at room temperature for 1.5 hours.



Immunofluorescent analysis of (-20°C Ethanol) fixed NIH/3T3 cells using Bcl2 antibody (66799-1-Ig, Clone: 1B5B9) at dilution of 1:100 and CoraLite®488-Conjugated AffiniPure Goat Anti-Mouse IgG(H+L).



1X10<sup>6</sup> NIH/3T3 cells were intracellularly stained with 0.5 ug Anti-Mouse Bcl2 (66799-1-Ig, Clone:1B5B9) and CoraLite®488-Conjugated AffiniPure Goat Anti-Mouse IgG(H+L) at dilution 1:1000 (red), or 0.5 ug Control Antibody. Cells were fixed with 4% PFA and permeabilized with Flow Cytometry Perm Buffer (PF00011-C).