

À des fins de recherche uniquement

Anticorps Monoclonal anti-AQP1

Numéro de catalogue: 66805-1-Ig **1 Publications**



Informations de base

Numéro de catalogue: 66805-1-Ig	Numéro d'acquisition GenBank: BC022486	Méthode de purification: Purification par protéine G
Taille: 150ul , Concentration: 1400 µg/ml by Nanodrop and 1000 µg/ml by Bradford method using BSA as the standard;	Identification du gène (NCBI): aquaporin 1 (Colton blood group)	CloneNo.: 2E5D6
Hôte: Mouse	Nom complet: aquaporin 1 (Colton blood group)	Dilutions recommandées: WB 1:5000-1:20000 IHC 1:200-1:800 IF 1:200-1:800
Isotype: IgG1	MW calculé: 269 aa, 29 kDa	
Immunogen Catalog Number: AG14093	MW observés: 28 kDa, 38-40 kDa	

Applications

Applications testées:

IF, IHC, WB, ELISA

Demandes citées:

IF

Spécificité de l'espèce:

Humain, porc

Espèces citées:

Humain

Remarque-IHC: il est suggéré de démasquer l'antigène avec un tampon de TE buffer pH 9,0; (*) A défaut, 'le démasquage de l'antigène peut être 'effectué avec un tampon citrate pH 6,0.

Contrôles positifs:

WB : tissu cardiaque humain, tissu de muscle squelettique humain, tissu rénal de porc

IHC : tissu rénal humain,

IF : tissu rénal humain,

Informations générales

AQP1 is a member of aquaporins (AQPs) that are small membrane-spanning proteins facilitating water transport. AQP1 is expressed in most tissues in the mammalian body. Alterations of AQP1 expression have been linked to variety of diseases, including cancer. The predicted molecular weight of AQP1 is around 28 kDa, while highly glycosylated form can also be observed around 40-45 kDa. (1530176)

Publications notables

Autrice	Pubmed ID	Journal	Application
Lingxiao Tong	37599822	iScience	IF

Stockage

Stockage:

Stocker à -20°C. Stable pendant un an après l'expédition.

Tampon de stockage:

PBS avec azoture de sodium à 0,02 % et glycérol à 50 % pH 7,3

L'aliquotage n'est pas nécessaire pour le stockage à -20C

*** Les 20ul contiennent 0,1% de BSA.

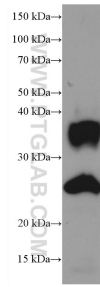
For technical support and original validation data for this product please contact:

T: 1 (888) 4PTGLAB (1-888-478-4522) (toll free in USA), or 1(312) 455-8498 (outside USA)

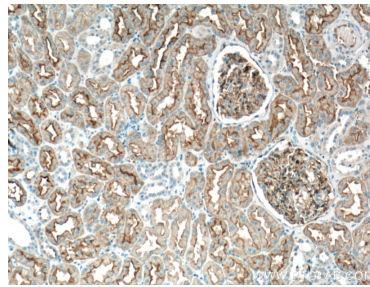
E: proteintech@ptglab.com
W: ptglab.com

This product is exclusively available under Proteintech Group brand and is not available to purchase from any other manufacturer.

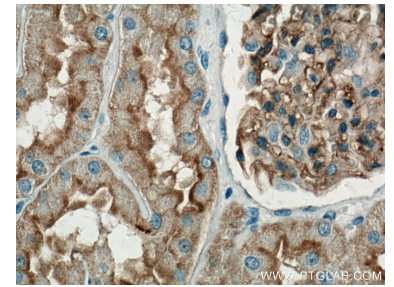
Données de validation sélectionnées



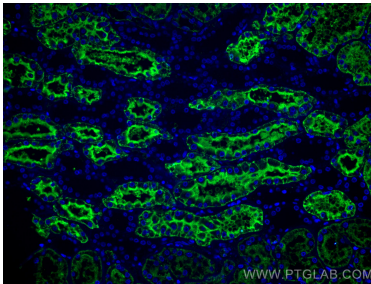
human heart tissue were subjected to SDS PAGE followed by western blot with 66805-1-Ig (AQP1 antibody) at dilution of 1:10000 incubated at room temperature for 1.5 hours.



Immunohistochemical analysis of paraffin-embedded human kidney tissue slide using 66805-1-Ig (AQP1 antibody) at dilution of 1:400 (under 10x lens. Heat mediated antigen retrieval with Tris-EDTA buffer (pH 9.0).



Immunohistochemical analysis of paraffin-embedded human kidney tissue slide using 66805-1-Ig (AQP1 antibody) at dilution of 1:400 (under 40x lens. Heat mediated antigen retrieval with Tris-EDTA buffer (pH 9.0).



Immunofluorescent analysis of (4% PFA) fixed human kidney tissue using AQP1 antibody (66805-1-Ig, Clone: 2E5D6) at dilution of 1:400 and CoraLite®488-Conjugated AffiniPure Goat Anti-Mouse IgG(H+L).