

À des fins de recherche uniquement

Anticorps Monoclonal anti-EEF1A2

Numéro de catalogue: 66806-1-Ig



Informations de base

Numéro de catalogue: 66806-1-Ig	Numéro d'acquisition GenBank: BC000432	Méthode de purification: Purification par protéine G
Taille: 150ul , Concentration: 1800 µg/ml by Nanodrop and 1000 µg/ml by Bradford method using BSA as the standard;	Identification du gène (NCBI): 1917	CloneNo.: 4F3F4
Hôte: Mouse	Nom complet: eukaryotic translation elongation factor 1 alpha 2	Dilutions recommandées: WB 1:1000-1:6000
Isotype: IgG1	MW calculé: 50 kDa	
Immunogen Catalog Number: AG6875	MW observés: 48-50 kDa	

Applications

Applications testées:
WB, ELISA
Spécificité de l'espèce:
Humain, porc, rat, souris

Contrôles positifs:

WB : cellules HeLa, cellules 4T1, cellules HEK-293, cellules HSC-T6, cellules Jurkat, cellules MCF-7, cellules NIH/3T3, tissu cérébral de porc, tissu cérébral de rat, tissu cérébral de souris

Informations générales

eEF1A2 is one of two isoforms (eEF1A1 and eEF1A2) of eukaryotic elongation factor 1 alpha (eEF1A or eEF1α). The two isoforms share more than 90% sequence identity and have the similar function that being a protein translation factor involved in protein synthesis. Addition, eEF1A2 plays an important role in cell cycle regulation, heat-shock response, aging, posttranslational modifications, and signal transduction (PMID: 25905039). eEF1A2 is expressed in heart, brain tissue, diaphragm and skeletal muscle while eEF1A1 is expressed ubiquitously (PMID:14588074). And the eEF1A2 protein stimulates the phospholipid signaling and activates the Akt-dependent cell migration and actin remodeling that ultimately favors tumorigenesis. It is reported that eEF1A2 was related with kinds of cancers such as ovarian cancer, prostate cancer, pancreatic cancer, breast cancer and lung cancer (PMID:14588074; 24853801; 25744894; 25905039). An 48 kDa band has also been reported (PMID: 24285179).

Stockage

Stockage:
Stocker à -20°C. Stable pendant un an après l'expédition.
Tampon de stockage:
PBS avec azoture de sodium à 0,02 % et glycérol à 50 % pH 7,3
L'aliquotage n'est pas nécessaire pour le stockage à -20C

*** Les 20ul contiennent 0,1% de BSA.

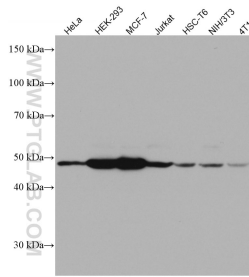
For technical support and original validation data for this product please contact:

T: 1 (888) 4PTGLAB (1-888-478-4522) (toll free
in USA), or 1(312) 455-8498 (outside USA)

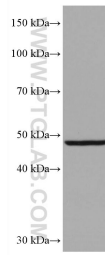
E: proteintech@ptglab.com
W: ptglab.com

This product is exclusively available under Proteintech Group brand and is not available to purchase from any other manufacturer.

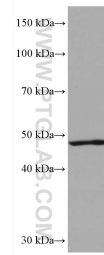
Données de validation sélectionnées



Various lysates were subjected to SDS PAGE followed by western blot with 66806-1-Ig (EEF1A2 antibody) at dilution of 1:3000 incubated at room temperature for 1.5 hours.



mouse brain tissue were subjected to SDS PAGE followed by western blot with 66806-1-Ig (EEF1A2 antibody) at dilution of 1:20000 incubated at room temperature for 1.5 hours.



rat brain tissue were subjected to SDS PAGE followed by western blot with 66806-1-Ig (EEF1A2 antibody) at dilution of 1:20000 incubated at room temperature for 1.5 hours.