

À des fins de recherche uniquement

Anticorps Monoclonal anti-PABPC1,PABP



Numéro de catalogue: 66809-1-Ig

Phare

2 Publications

Informations de base

Numéro de catalogue: 66809-1-Ig	Numéro d'acquisition GenBank: BC015958	Méthode de purification: Purification par protéine G
Taille: 150ul, Concentration: 2400 µg/ml by Nanodrop and 1000 µg/ml by Bradford method using BSA as the standard;	Identification du gène (NCBI): 26986	CloneNo.: 3D8B5
Hôte: Mouse	Nom complet: poly(A) binding protein, cytoplasmic 1	Dilutions recommandées: WB 1:2000-1:10000 IHC 1:50-1:500 IF 1:50-1:500
Isotype: IgG1	MW calculé: 71 kDa	
Immunogen Catalog Number: AG27860	MW observés: 71 kDa	

Applications

Applications testées:

IF, IHC, WB, ELISA

Demandes citées:

IHC

Spécificité de l'espèce:

Humain, rat, souris

Espèces citées:

Humain

Remarque-IHC: il est suggéré de démasquer l'antigène avec un tampon de TE buffer pH 9,0; (*) A défaut, 'le démasquage de l'antigène peut être 'effectué avec un tampon citrate pH 6,0.

Contrôles positifs:

WB : cellules HeLa, cellules LNCaP, cellules MCF-7, cellules NCCIT, cellules T-47D

IHC : tissu testiculaire de souris, tissu de cervelet de souris

IF : cellules HEK-293,

Informations générales

The poly(A)-binding protein (PABP), which is found complexed to the 3-prime poly(A) tail of eukaryotic mRNA, is required for poly(A) shortening and translation initiation [PMID: 21989405]. Polyadenylate-binding protein 1 (PABPC1) is a cytoplasmic-nuclear shuttling protein important for protein translation initiation, and both RNA processing and stability. In the cytoplasm, PABPC1 binds to the 3' poly(A) tail of eukaryotic mRNAs through its RNA-recognition motifs (RRM) and interacts with the N-terminus of eIF4G, part of the eIF4F complex associated with the 5' cap structure [PMID:20009508, 17381337].

Publications notables

Autrice	Pubmed ID	Journal	Application
Abdoulaye Issotina Zibrila	34232157	J Hypertens	IHC
Tailai An	34420428	Future Oncol	IHC

Stockage

Stockage:

Stocker à -20°C. Stable pendant un an après l'expédition.

Tampon de stockage:

PBS avec azoture de sodium à 0,02 % et glycérol à 50 % pH 7,3

L'aliquotage n'est pas nécessaire pour le stockage à -20C

*** Les 20ul contiennent 0,1% de BSA.

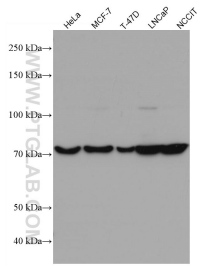
For technical support and original validation data for this product please contact:

T: 1 (888) 4PTGLAB (1-888-478-4522) (toll free in USA), or 1(312) 455-8498 (outside USA)

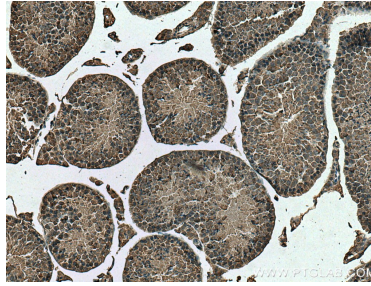
E: proteintech@ptglab.com
W: ptglab.com

This product is exclusively available under Proteintech Group brand and is not available to purchase from any other manufacturer.

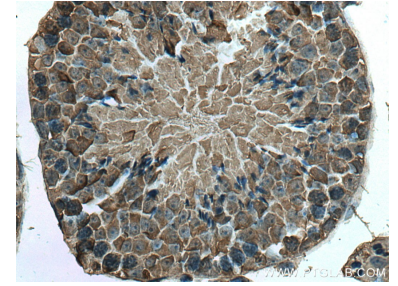
Données de validation sélectionnées



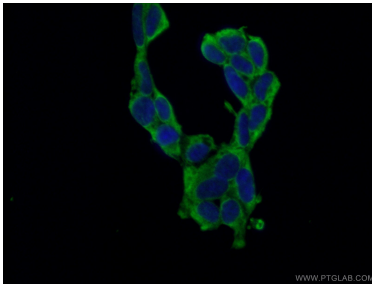
Various lysates were subjected to SDS PAGE followed by western blot with 66809-1-Ig (PABPC1,PABP antibody) at dilution of 1:5000 incubated at room temperature for 1.5 hours.



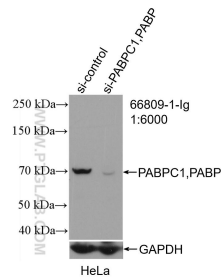
Immunohistochemical analysis of paraffin-embedded mouse testis tissue slide using 66809-1-Ig (PABPC1,PABP antibody) at dilution of 1:200 (under 10x lens). Heat mediated antigen retrieval with Tris-EDTA buffer (pH 9.0).



Immunohistochemical analysis of paraffin-embedded mouse testis tissue slide using 66809-1-Ig (PABPC1,PABP antibody) at dilution of 1:200 (under 40x lens). Heat mediated antigen retrieval with Tris-EDTA buffer (pH 9.0).



Immunofluorescent analysis of (-20°C Ethanol) fixed HEK-293 cells using 66809-1-Ig (PABPC1,PABP antibody) at dilution of 1:100 and Alexa Fluor 488-Conjugated AffiniPure Goat Anti-Mouse IgG(H+L).



WB result of PABPC1,PABP antibody (66809-1-Ig; 1:6000; incubated at room temperature for 1.5 hours) with sh-Control and sh-PABPC1,PABP transfected HeLa cells.