

À des fins de recherche uniquement

Anticorps Monoclonal anti-CEP250,C-NAP1



Numéro de catalogue: 66814-1-Ig **1 Publications**

Informations de base

Numéro de catalogue: 66814-1-Ig	Numéro d'acquisition GenBank: BC001433	Méthode de purification: Purification par protéine A
Taille: 150ul , Concentration: 1500 µg/ml by Nanodrop and 1000 µg/ml by Bradford method using BSA as the standard;	Identification du gène (NCBI): 11190	CloneNo.: 2G12D12
Hôte: Mouse	Nom complet: centrosomal protein 250kDa	Dilutions recommandées: WB 1:1000-1:8000
Isotype: IgG1	MW calculé: 281 kDa	
Immunogen Catalog Number: AG5925	MW observés: 280 kDa	

Applications

Applications testées: WB, ELISA	Contrôles positifs: WB : cellules HeLa, cellules HEK-293, cellules HepG2, cellules HL-60, cellules Jurkat, cellules K-562
Demandes citées: IF, IHC	
Spécificité de l'espèce: Humain	
Espèces citées: Humain, souris	

Informations générales

CEP250, also known as C-Nap1, is a coiled-coil protein that localizes to the proximal ends of mother and daughter centrioles. It is required for centriole-centriole cohesion during interphase of the cell cycle. It dissociates from the centrosomes when parental centrioles separate at the beginning of mitosis. The protein associates with and is phosphorylated by NIMA-related kinase 2, which is also associated with the centrosome.

Publications notables

Autrice	Pubmed ID	Journal	Application
Luigi Cerulo	37250316	iScience	IHC,IF

Stockage

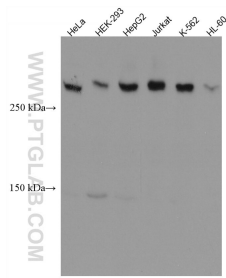
Stockage:
Stocker à -20°C. Stable pendant un an après l'expédition.
Tampon de stockage:
PBS avec azote de sodium à 0,02 % et glycérol à 50 % pH 7,3
L'aliquotage n'est pas nécessaire pour le stockage à -20C

***** Les 20ul contiennent 0,1% de BSA.**

For technical support and original validation data for this product please contact:
T: 1 (888) 4PTGLAB (1-888-478-4522) (toll free in USA), or 1(312) 455-8498 (outside USA)
E: proteintech@ptglab.com
W: ptglab.com

This product is exclusively available under Proteintech Group brand and is not available to purchase from any other manufacturer.

Données de validation sélectionnées



Various lysates were subjected to SDS PAGE followed by western blot with 66814-1-Ig (CEP250,C-NAP1 antibody) at dilution of 1:4000 incubated at room temperature for 1.5 hours.