

À des fins de recherche uniquement

# Anticorps Monoclonal anti-CHAT

Numéro de catalogue: 66816-1-Ig



## Informations de base

Numéro de catalogue: 66816-1-Ig	Numéro d'acquisition GenBank: BC130617	Méthode de purification: Purification par protéine A
Taille: 150ul, Concentration: 1400 µg/ml by Nanodrop and 1000 µg/ml by Bradford method using BSA as the standard;	Identification du gène (NCBI): 1103	CloneNo.: 1F7A9
Hôte: Mouse	Nom complet: choline acetyltransferase	Dilutions recommandées: WB 1:1000-1:4000
Isotype: IgG2b	MW calculé 748 aa, 83 kDa	
Immunogen Catalog Number: AG19602	MW observés: 67-71 kDa	

## Applications

Applications testées: WB, ELISA	Contrôles positifs:
Spécificité de l'espèce: Humain, rat, souris	WB : cellules Jurkat, cellules HEK-293, cellules Neuro-2a, cellules PC-12, cellules SH-SY5Y, cellules U-251, cellules Y79

## Informations générales

CHAT (choline acetyltransferase) belongs to the carnitine/choline acetyltransferase family. It catalyzes the reversible synthesis of acetylcholine (ACh) from acetyl CoA and choline at cholinergic synapses. Defects in CHAT are the cause of congenital myasthenic syndrome with episodic apnea (CMSEA). CHAT is known to be present exclusively in the cytoplasm of cholinergic neurons and anti-CHAT antibody has been considered as the best marker for cholinergic neurons.

## Stockage

Stockage:  
Stocker à -20°C. Stable pendant un an après l'expédition.  
Tampon de stockage:  
PBS avec azoture de sodium à 0,02 % et glycérol à 50 % pH 7,3  
L'aliquotage n'est pas nécessaire pour le stockage à -20C

\*\*\* Les 20ul contiennent 0,1% de BSA.

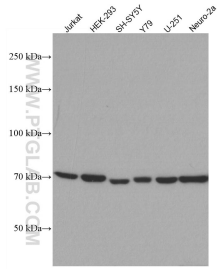
For technical support and original validation data for this product please contact:

T: 1 (888) 4PTGLAB (1-888-478-4522) (toll free  
in USA), or 1(312) 455-8498 (outside USA)

E: [proteintech@ptglab.com](mailto:proteintech@ptglab.com)  
W: [ptglab.com](http://ptglab.com)

This product is exclusively available under Proteintech Group brand and is not available to purchase from any other manufacturer.

## Données de validation sélectionnées



Various lysates were subjected to SDS PAGE followed by western blot with 66816-1-Ig (CHAT antibody) at dilution of 1:2000 incubated at room temperature for 1.5 hours.