

À des fins de recherche uniquement

Anticorps Monoclonal anti-ESRRB

Numéro de catalogue: 66818-1-Ig **1 Publications**



Informations de base

Numéro de catalogue: 66818-1-Ig	Numéro d'acquisition GenBank: BC131517	Méthode de purification: Purification par protéine A
Taille: 150ul , Concentration: 1300 µg/ml by Nanodrop and 1000 µg/ml by Bradford method using BSA as the standard;	Identification du gène (NCBI): 2103	CloneNo.: 3E10C1
Hôte: Mouse	Nom complet: estrogen-related receptor beta	Dilutions recommandées: WB 1:1000-1:4000 IHC 1:1000-1:4000 IF 1:200-1:800
Isotype: IgG1	MW calculé: 508 aa, 56 kDa	
Immunogen Catalog Number: AG18626	MW observés: 47 kDa	

Applications

Applications testées:

IF, IHC, WB, ELISA

Demandes citées:

IF

Spécificité de l'espèce:

Humain, rat, souris

Espèces citées:

Humain

Remarque-IHC: il est suggéré de démasquer l'antigène avec un tampon de TE buffer pH 9,0; (*) À défaut, 'le démasquage de l'antigène peut être 'effectué avec un tampon citrate pH 6,0.

Contrôles positifs:

WB : cellules HEK-293, cellules A549, cellules Caco-2, cellules HeLa, cellules HT-29, cellules JAR, cellules LNCaP, cellules NCCIT, tissu cérébral de rat, tissu cérébral de souris

IHC : tissu de cancer de la prostate humain,

IF : cellules Caco-2,

Informations générales

Estrogen related receptor beta (ESRRB), a NR3 Steroid Receptor, has been shown to affect early placental development. Also it can act as a repressor of transcriptional activity mediated by the glucocorticoid receptor (GR). It binds as a monomer to the extended half-site TNAAGTGCA and as a homodimer to the estrogen response element (ERE), palindromic thyroid hormone response element (TRE(pal)), and SF-1 response element, but not to the glucocorticoid response element (GRE). Estrogen related receptor beta mutations lead to abnormal development of the chorion and defective diploid trophoblast proliferation, and are lethal during midgestation. Expression has been documented in mice in the extra embryonic ectoderm that gives rise to the chorion. ESTs have been isolated from normal human eye, lung, and testis libraries. The ligand for the receptor is PPARgamma coactivator 1 (PGC-1) beta. ESRRB exists various isoforms and molecular weight of each isoform is 48 kDa, 55 kDa and 56 kDa.

Publications notables

Autrice	Pubmed ID	Journal	Application
Bo Wang	34749018	Stem Cell Res	IF

Stockage

Stockage:

Stocker à -20°C. Stable pendant un an après l'expédition.

Tampon de stockage:

PBS avec azoture de sodium à 0,02 % et glycérol à 50 % pH 7,3

L'aliquotage n'est pas nécessaire pour le stockage à -20C

*** Les 20ul contiennent 0,1% de BSA.

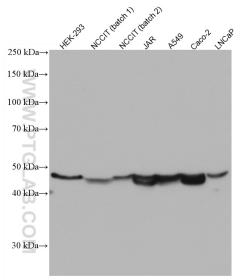
For technical support and original validation data for this product please contact:

T: 1 (888) 4PTGLAB (1-888-478-4522) (toll free in USA), or 1(312) 455-8498 (outside USA)

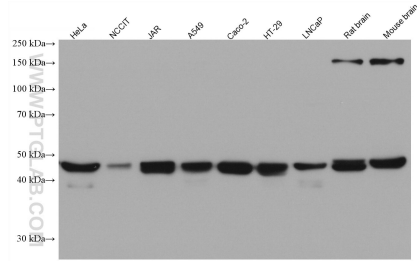
E: proteintech@ptglab.com
W: ptglab.com

This product is exclusively available under Proteintech Group brand and is not available to purchase from any other manufacturer.

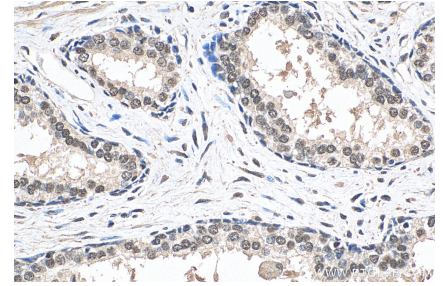
Données de validation sélectionnées



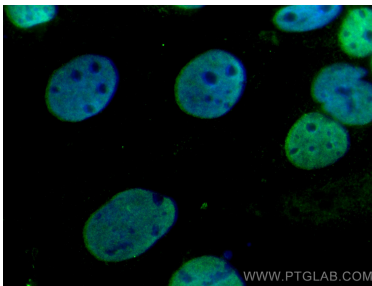
Various lysates were subjected to SDS PAGE followed by western blot with 66818-1-Ig (ESRRB antibody) at dilution of 1:2000 incubated at room temperature for 1.5 hours.



Various lysates were subjected to SDS PAGE followed by western blot with 66818-1-Ig (ESRRB antibody) at dilution of 1:40000 incubated at room temperature for 1.5 hours.



Immunohistochemical analysis of paraffin-embedded human prostate cancer tissue slide using 66818-1-Ig (ESRRB antibody) at dilution of 1:2000 (under 10x lens). Heat mediated antigen retrieval with Tris-EDTA buffer (pH 9.0).



Immunofluorescent analysis of (4% PFA) fixed Caco-2 cells using ESRRB antibody (66818-1-Ig, Clone: 3E10C1) at dilution of 1:400 and CoraLite®488-Conjugated AffiniPure Goat Anti-Mouse IgG(H+L).