

À des fins de recherche uniquement

Anticorps Monoclonal anti-Collagen Type VI



Numéro de catalogue: 66824-1-Ig

Informations de base

Numéro de catalogue: 66824-1-Ig	Numéro d'acquisition GenBank: BC052575	Méthode de purification: Purification par protéine A
Taille: 150ul, Concentration: 1400 µg/ml by Nanodrop and 1000 µg/ml by Bradford method using BSA as the standard;	Identification du gène (NCBI): 1291	CloneNo.: 3H10B1
Hôte: Mouse	Nom complet: collagen, type VI, alpha 1	Dilutions recommandées: WB 1:1000-1:6000 IHC 1:1000-1:4000 IF 1:200-1:800
Isotype: IgG2a	MW calculé: 1028 aa, 109 kDa	
Immunogen Catalog Number: AG11809	MW observés: 140-150 kDa	

Applications

Applications testées: IF, IHC, WB, ELISA	Contrôles positifs:
Spécificité de l'espèce: Humain	WB : tissu de muscle squelettique humain, tissu cardiaque humain
Remarque-IHC: il est suggéré de démasquer l'antigène avec un tampon de TE buffer pH 9.0; (*) À défaut, le démasquage de l'antigène peut être effectué avec un tampon citrate pH 6,0.	IHC : tissu de cancer du foie humain, tissu de cancer du côlon humain
	IF : tissu de cancer du foie humain,

Informations générales

Type VI Collagen is a major structural component of microfibrils. Type VI Collagen was found to be present throughout the connective tissue and in the extracellular matrix of cultured fibroblasts (PMID: 6723253). It is a heterotrimer composed of three different chains: alpha-1(VI), alpha-2(VI), and alpha-3(VI) or alpha-5(VI) or alpha-6(VI). The alpha-1(VI) chain is encoded by COL6A1 gene. Mutations in this gene result in Bethlem myopathy and Ullrich congenital muscular dystrophy.

Stockage

Stockage:
Stocker à -20°C. Stable pendant un an après l'expédition.
Tampon de stockage:
PBS avec azoture de sodium à 0,02 % et glycérol à 50 % pH 7,3
L'aliquotage n'est pas nécessaire pour le stockage à -20C

*** Les 20ul contiennent 0,1% de BSA.

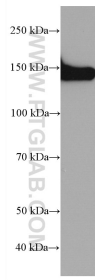
For technical support and original validation data for this product please contact:

T: 1 (888) 4PTGLAB (1-888-478-4522) (toll free in USA), or 1(312) 455-8498 (outside USA)

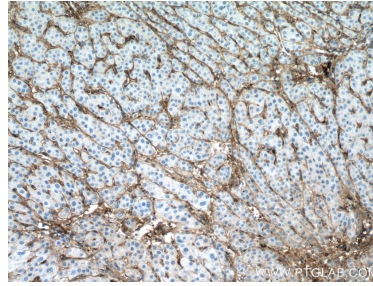
E: proteintech@ptglab.com
W: ptglab.com

This product is exclusively available under Proteintech Group brand and is not available to purchase from any other manufacturer.

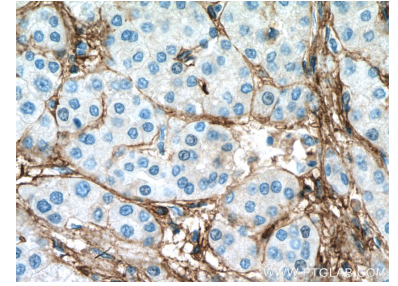
Données de validation sélectionnées



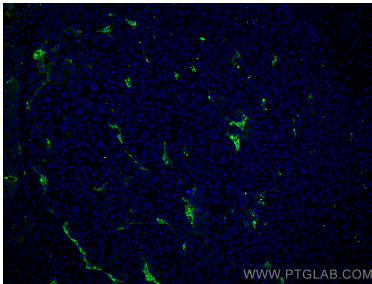
human skeletal muscle tissue were subjected to SDS PAGE followed by western blot with 66824-1-Ig (Collagen Type VI antibody) at dilution of 1:3000 incubated at room temperature for 1.5 hours.



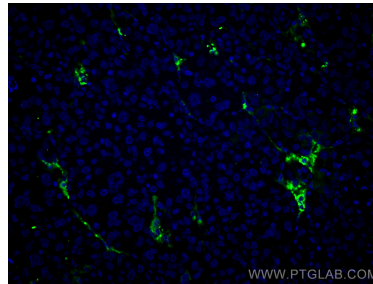
Immunohistochemical analysis of paraffin-embedded human liver cancer tissue slide using 66824-1-Ig (Collagen Type VI antibody) at dilution of 1:2000 (under 10x lens. Heat mediated antigen retrieval with Tris-EDTA buffer (pH 9.0).



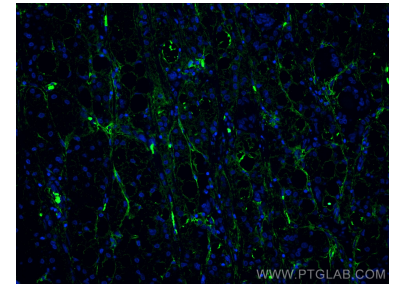
Immunohistochemical analysis of paraffin-embedded human liver cancer tissue slide using 66824-1-Ig (Collagen Type VI antibody) at dilution of 1:2000 (under 40x lens. Heat mediated antigen retrieval with Tris-EDTA buffer (pH 9.0).



Immunofluorescent analysis of (4% PFA) fixed human liver cancer tissue using Collagen Type VI antibody (66824-1-Ig, Clone: 3H10B1) at dilution of 1:400 and CoraLite®488-Conjugated AffiniPure Goat Anti-Mouse IgG(H+L).



Immunofluorescent analysis of (4% PFA) fixed human liver cancer tissue using Collagen Type VI antibody (66824-1-Ig, Clone: 3H10B1) at dilution of 1:400 and CoraLite®488-Conjugated AffiniPure Goat Anti-Mouse IgG(H+L).



Immunofluorescent analysis of (4% PFA) fixed human liver cancer tissue using Collagen Type VI antibody (66824-1-Ig, Clone: 3H10B1) at dilution of 1:400 and CoraLite®488-Conjugated AffiniPure Goat Anti-Mouse IgG(H+L).