

À des fins de recherche uniquement

Anticorps Monoclonal anti-IL-12RB1

Numéro de catalogue: 66829-1-Ig **Phare**



Informations de base

Numéro de catalogue: 66829-1-Ig	Numéro d'acquisition GenBank: BC029121	Méthode de purification: Purification par protéine G
Taille: 150ul , Concentration: 700 µg/ml by Nanodrop and 500 µg/ml by Bradford method using BSA as the standard;	Identification du gène (NCBI): 3594	CloneNo.: 1E10E10
Hôte: Mouse	Nom complet: interleukin 12 receptor, beta 1	Dilutions recommandées: WB 1:1000-1:8000
Isotype: IgG1	MW calculé: 662 aa, 73 kDa	
Immunogen Catalog Number: AG6920	MW observés: 100-110 kDa	

Applications

Applications testées:
FC, WB, ELISA

Spécificité de l'espèce:
Humain

Contrôles positifs:

WB : cellules Ramos, cellules Daudi, cellules Jurkat, cellules K-562, cellules Raji, cellules TF-1, cellules THP-1

Informations générales

IL12RB1, also named as Interleukin-12 receptor subunit beta-1 or CD212, is a 662 amino acid protein, which contains 5 fibronectin type-III domains and belongs to the type I cytokine receptor family. Type 2 subfamily. IL12RB1 localizes in the membrane and functions as an interleukin receptor which binds interleukin-12 with low affinity and is involved in IL12 transduction. Associated with IL12RB2 it forms a functional, high affinity receptor for IL12. Associates also with IL23R to form the interleukin-23 receptor which functions in IL23 signal transduction probably through activation of the Jak-Stat signaling cascade.

Stockage

Stockage:
Stocker à -20°C. Stable pendant un an après l'expédition.

Tampon de stockage:
PBS avec azoture de sodium à 0,02 % et glycérol à 50 % pH 7,3

L'aliquotage n'est pas nécessaire pour le stockage à -20C

*** Les 20ul contiennent 0,1% de BSA.

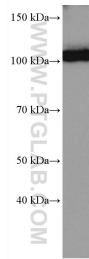
For technical support and original validation data for this product please contact:

T: 1 (888) 4PTGLAB (1-888-478-4522) (toll free in USA), or 1(312) 455-8498 (outside USA)

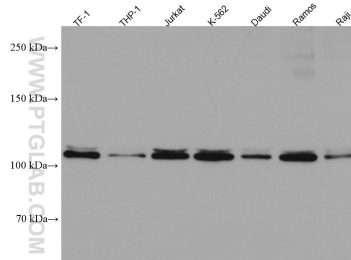
E: proteintech@ptglab.com
W: ptglab.com

This product is exclusively available under Proteintech Group brand and is not available to purchase from any other manufacturer.

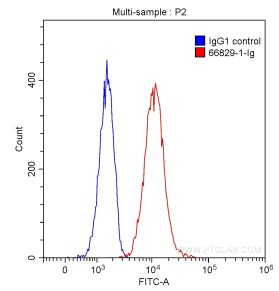
Données de validation sélectionnées



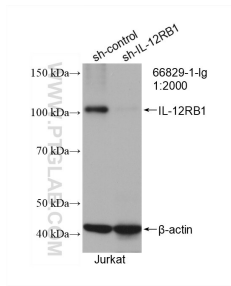
Ramos cells were subjected to SDS PAGE followed by western blot with 66829-1-ig (IL12RB1 antibody) at dilution of 1:4000 incubated at room temperature for 1.5 hours.



Various lysates were subjected to SDS PAGE followed by western blot with 66829-1-ig (IL12RB1 antibody) at dilution of 1:10000 incubated at room temperature for 1.5 hours.



1×10^6 K-562 cells were stained with 0.20 ug/test Anti-Human IL12RB1 (66829-1-ig, Clone:1E10E10) (red) or 0.20 ug control antibody (blue) and CoraLite@488-Conjugated AffiniPure Goat Anti-Mouse IgG(H+L) with dilution 1:1000. Fixed with 90% MeOH.



WB result of IL-12RB1 antibody (66829-1-ig; 1:600; incubated at room temperature for 1.5 hours) with sh-Control and sh-IL-12RB1 transfected Jurkat cells.