

À des fins de recherche uniquement

Anticorps Monoclonal anti-ASGR2

Numéro de catalogue: 66831-1-Ig



Informations de base

Numéro de catalogue: 66831-1-Ig	Numéro d'acquisition GenBank: BC017251	Méthode de purification: Purification par protéine A
Taille: 150ul , Concentration: 2900 µg/ml by Nanodrop and 1500 µg/ml by Bradford method using BSA as the standard;	Identification du gène (NCBI): 433	CloneNo.: 2A5C12
Hôte: Mouse	Nom complet: asialoglycoprotein receptor 2	Dilutions recommandées: WB 1:1000-1:3000
Isotype: IgG2a	MW calculé 39 kDa	
Immunogen Catalog Number: AG2037	MW observés: 36 kDa	

Applications

Applications testées: WB, ELISA	Contrôles positifs: WB : cellules SMMC-7721, cellules HSC-T6
Spécificité de l'espèce: Humain, rat	

Informations générales

Asialoglycoprotein receptor (ASGPR), also known as the hepatic galactose/N-acetylglucosamine (GlcNAc) receptor or Ashwell receptor, is a C-type lectin expressed exclusively in hepatic parenchymal cells. ASGPR consists of two subunits, a major subunit (ASGR1, HL-1) and a minor subunit (ASGR2, HL-2), and specifically recognizes terminal β -linked galactose or GlcNAc on circulating glycoproteins or cells. This receptor plays a critical role in serum glycoprotein homeostasis by mediating the endocytosis and lysosomal degradation of glycoproteins that contain terminal galactose or GlcNAc residues. ASGPR may facilitate hepatic infection by multiple viruses including hepatitis B, and is also a target for liver-specific drug delivery.

Stockage

Stockage:
Stocker à -20°C. Stable pendant un an après l'expédition.
Tampon de stockage:
PBS avec azoture de sodium à 0,02 % et glycérol à 50 % pH 7,3
L'aliquotage n'est pas nécessaire pour le stockage à -20C

***** Les 20ul contiennent 0,1% de BSA.**

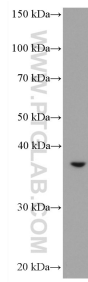
For technical support and original validation data for this product please contact:

T: 1 (888) 4PTGLAB (1-888-478-4522) (toll free
in USA), or 1(312) 455-8498 (outside USA)

E: proteintech@ptglab.com
W: ptglab.com

This product is exclusively available under Proteintech Group brand and is not available to purchase from any other manufacturer.

Données de validation sélectionnées



SMMC-7721 cells were subjected to SDS PAGE followed by western blot with 66831-1-Ig (ASGR2 antibody) at dilution of 1:2500 incubated at room temperature for 1.5 hours.