

À des fins de recherche uniquement

Anticorps Monoclonal anti-NRF1/nuclear respiratory factor 1



Numéro de catalogue: 66832-1-Ig **3 Publications**

Informations de base

Numéro de catalogue: 66832-1-Ig	Numéro d'acquisition GenBank: BC016925	Méthode de purification: Purification par protéine A
Taille: 150ul , Concentration: 1700 µg/ml by Nanodrop and 1000 µg/ml by Bradford method using BSA as the standard;	Identification du gène (NCBI): 4899	CloneNo.: 3C2B8
Hôte: Mouse	Nom complet: nuclear respiratory factor 1	Dilutions recommandées: WB 1:5000-1:50000 IHC 1:500-1:2000 IF 1:50-1:500
Isotype: IgG2b	MW calculé: 522 aa, 56 kDa	
Immunogen Catalog Number: AG28149	MW observés: 70 kDa	

Applications

Applications testées:
FC, IF, IHC, WB, ELISA

Demandes citées:
WB

Spécificité de l'espèce:
Humain, rat, souris

Espèces citées:
rat, souris

Remarque-IHC: il est suggéré de démasquer l'antigène avec un tampon de TE buffer pH 9,0; (*) A défaut, 'le démasquage de l'antigène peut être effectué avec un tampon citrate pH 6,0.

Contrôles positifs:

WB : cellules HeLa, cellules HEK-293, cellules HSC-T6, cellules Jurkat, cellules MCF-7, cellules NIH/3T3

IHC : tissu de cancer du côlon humain,

IF : cellules HepG2,

Informations générales

NRF1, also named as Alpha-pal and NRF-1, belongs to the NRF1/Ewg family. It is a transcription factor that activates the expression of the EIF2S1 (EIF2-alpha) gene. NRF1 is implicated in the control of nuclear genes required for respiration, heme biosynthesis, and mitochondrial DNA transcription and replication. It plays a critical role in regulating the expression of many antioxidant response element (ARE)-dependent genes. NRF1 exists various isoforms and long isoform is about 67 kDa and short isoform is about 45 kDa.

Publications notables

Autrice	Pubmed ID	Journal	Application
Jingchi Sun	35324981	PLoS One	WB
Yue Wu	34221923	J Clin Transl Hepatol	WB
Shuying Huang	37182786	Nitric Oxide	WB

Stockage

Stockage:

Stocker à -20°C. Stable pendant un an après l'expédition.

Tampon de stockage:

PBS avec azoture de sodium à 0,02 % et glycérol à 50 % pH 7,3

L'aliquotage n'est pas nécessaire pour le stockage à -20C

***** Les 20ul contiennent 0,1% de BSA.**

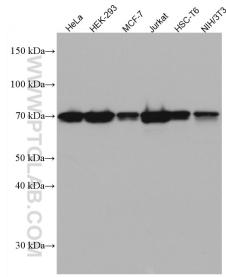
For technical support and original validation data for this product please contact:

T: 1 (888) 4PTGLAB (1-888-478-4522) (toll free in USA), or 1(312) 455-8498 (outside USA)

E: proteintech@ptglab.com
W: ptglab.com

This product is exclusively available under Proteintech Group brand and is not available to purchase from any other manufacturer.

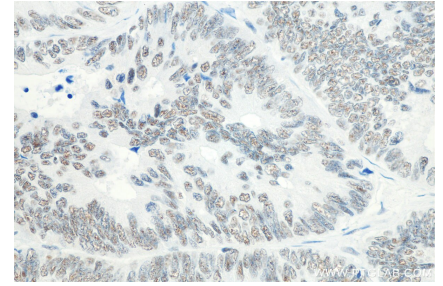
Données de validation sélectionnées



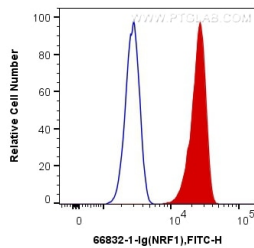
Various lysates were subjected to SDS PAGE followed by western blot with 66832-1-Ig (NRF1/nuclear respiratory factor 1) at dilution of 1:10000 incubated at room temperature for 1.5 hours.



Immunofluorescent analysis of (4% PFA) fixed HepG2 cells using 66832-1-Ig (NRF1/nuclear respiratory factor 1) at dilution of 1:50 and Alexa Fluor 488-Conjugated AffiniPure Goat Anti-Mouse IgG(H+L).



Immunohistochemical analysis of paraffin-embedded human colon cancer tissue slide using 66832-1-Ig (NRF1/nuclear respiratory factor 1 antibody) at dilution of 1:1000 (under 40x lens). Heat mediated antigen retrieval with Tris-EDTA buffer (pH 9.0).



1X10⁶ HepG2 cells were intracellularly stained with 0.2 ug Anti-Human NRF1/nuclear respiratory factor 1 (66832-1-Ig, Clone:3C2B8) and CoraLite®488-Conjugated AffiniPure Goat Anti-Mouse IgG(H+L) at dilution 1:1000 (red), or 0.2 ug Control Antibody. Cells were fixed and permeabilized with Transcription Factor Staining Buffer Kit (PF00011).