

À des fins de recherche uniquement

Anticorps Monoclonal anti-GLUT4

Numéro de catalogue: 66846-1-Ig **59 Publications**



Informations de base

Numéro de catalogue: 66846-1-Ig	Numéro d'acquisition GenBank: BC069615	Méthode de purification: Purification par protéine A
Taille: 150ul , Concentration: 2100 µg/ml by Nanodrop and 1000 µg/ml by Bradford method using BSA as the standard;	Identification du gène (NCBI): 6517	CloneNo.: 3G7C9
Hôte: Mouse	Nom complet: solute carrier family 2 (facilitated glucose transporter), member 4	Dilutions recommandées: WB 1:1000-1:3000 IHC 1:50-1:500 IF 1:200-1:800
Isotype: IgG2b	MW calculé: 509 aa, 55 kDa	
Immunogen Catalog Number: AG15390	MW observés: 48-50 kDa	

Applications

Applications testées:

FC, IF, IHC, WB, ELISA

Demandes citées:

IF, IHC, WB

Spécificité de l'espèce:

Humain, porc, rat, souris

Espèces citées:

Humain, rat, souris, Hamster

Remarque-IHC: il est suggéré de démasquer l'antigène avec un tampon de TE buffer pH 9,0; (*) A défaut, 'le démasquage de l'antigène peut être effectué avec un tampon citrate pH 6,0.

Contrôles positifs:

WB : tissu cardiaque de rat, cellules C2C12, tissu adipeux de souris, tissu cardiaque de porc, tissu cardiaque de souris, tissu cardiaque humain, tissu de muscle squelettique de rat, tissu de muscle squelettique de souris, tissu de muscle squelettique humain

IHC : tissu cardiaque de souris,

IF : tissu de muscle squelettique de souris,

Informations générales

GLUT4 is a member of GLUT family of transmembrane hexose transporters. It is an INS receptor that mediates INS-stimulated glucose transport in fat and muscle where it is predominantly expressed. In response to INS stimulation, GLUT4 experienced translocation from trans-Golgi network to plasma membrane. The impairment of GLUT4 translocation is associated with diabetes.

Publications notables

Autrice	Pubmed ID	Journal	Application
Kosmas Kosmas	36142826	Int J Mol Sci	WB
Miao Chen	32880392	Clin Sci (Lond)	WB
Jie Yao	36048765	Autophagy	WB

Stockage

Stockage:

Stocker à -20°C. Stable pendant un an après l'expédition.

Tampon de stockage:

PBS avec azoture de sodium à 0,02 % et glycérol à 50 % pH 7,3

L'aliquotage n'est pas nécessaire pour le stockage à -20C

***** Les 20ul contiennent 0,1% de BSA.**

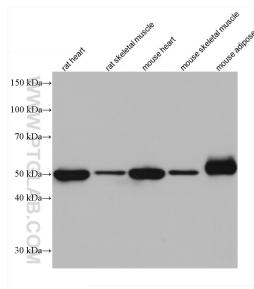
For technical support and original validation data for this product please contact:

T: 1 (888) 4PTGLAB (1-888-478-4522) (toll free in USA), or 1(312) 455-8498 (outside USA)

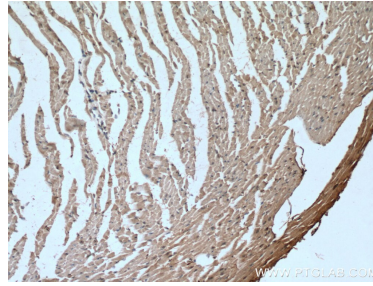
E: proteintech@ptglab.com
W: ptglab.com

This product is exclusively available under Proteintech Group brand and is not available to purchase from any other manufacturer.

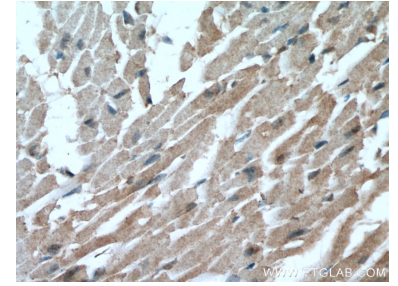
Données de validation sélectionnées



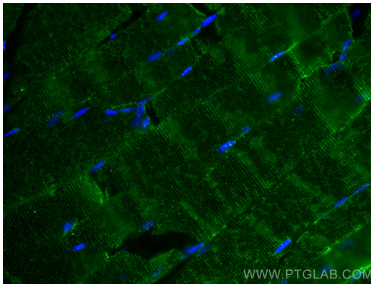
Various lysates were subjected to SDS PAGE followed by western blot with 66846-1-Ig (GLUT4 antibody) at dilution of 1:3000 incubated at room temperature for 1.5 hours.



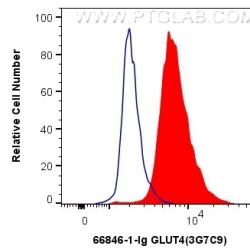
Immunohistochemical analysis of paraffin-embedded mouse heart tissue slide using 66846-1-Ig (GLUT4 antibody) at dilution of 1:200 (under 10x lens). Heat mediated antigen retrieval with Tris-EDTA buffer (pH 9.0).



Immunohistochemical analysis of paraffin-embedded mouse heart tissue slide using 66846-1-Ig (GLUT4 antibody) at dilution of 1:200 (under 40x lens). Heat mediated antigen retrieval with Tris-EDTA buffer (pH 9.0).



Immunofluorescent analysis of (4% PFA) fixed mouse skeletal muscle tissue using GLUT4 antibody (66846-1-Ig, Clone: 3G7C9) at dilution of 1:400 and CoraLite®488-Conjugated AffiniPure Goat Anti-Mouse IgG(H+L).



1X10⁶ HEK-293 cells were intracellularly stained with 0.4 ug Anti-Human GLUT4 (66846-1-Ig, Clone:3G7C9) and CoraLite®488-Conjugated AffiniPure Goat Anti-Mouse IgG(H+L) at dilution 1:1000 (red), or 0.4 ug Mouse IgG2b Isotype Control (66360-3-Ig, Clone: K11B8C4B5) (blue). Cells were fixed with 4% PFA and permeabilized with Flow Cytometry Perm Buffer (PF00011-C).