

À des fins de recherche uniquement

Anticorps Monoclonal anti-KLF5

Numéro de catalogue: 66850-1-Ig

Phare

1 Publications



Informations de base

Numéro de catalogue: 66850-1-Ig	Numéro d'acquisition GenBank: BC042131	Méthode de purification: Purification par protéine G
Taille: 150ul, Concentration: 1300 µg/ml by Nanodrop and 833 µg/ml by Bradford method using BSA as the standard;	Identification du gène (NCBI): 688	CloneNo.: 2C11C5
Hôte: Mouse	Nom complet: Kruppel-like factor 5 (intestinal)	Dilutions recommandées: WB 1:2000-1:10000
Isotype: IgG1	MW calculé: 457 aa, 51 kDa	
Immunogen Catalog Number: AG15403	MW observés: 51-57 kDa	

Applications

Applications testées: FC, WB, ELISA	Contrôles positifs: WB : cellules HeLa, cellules A549, cellules NCI-H1299
Demandes citées: IHC	
Spécificité de l'espèce: Humain, souris	
Espèces citées: Humain	

Informations générales

KLF5, also known as BTEB2 and IKLF, is a member of the Krueppel-like transcription factor family. It is a transcription factor for SMemb/non-muscle myosin heavy chain-B (NMHC-B). It is a molecular marker of phenotypically modulated smooth-muscle cells. KLF5 seems to be a key element linking external stress and cardiovascular remodeling.

Publications notables

Autrice	Pubmed ID	Journal	Application
Ping Zhao	37063424	Int J Biol Sci	IHC

Stockage

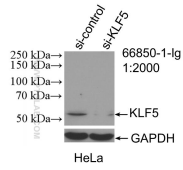
Stockage:
Stocker à -20°C. Stable pendant un an après l'expédition.
Tampon de stockage:
PBS avec azoture de sodium à 0,02 % et glycérol à 50 % pH 7,3
L'aliquotage n'est pas nécessaire pour le stockage à -20C

*** Les 20ul contiennent 0,1% de BSA.

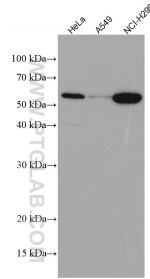
For technical support and original validation data for this product please contact:
T: 1 (888) 4PTGLAB (1-888-478-4522) (toll free in USA), or 1(312) 455-8498 (outside USA)
E: proteintech@ptglab.com
W: ptglab.com

This product is exclusively available under Proteintech Group brand and is not available to purchase from any other manufacturer.

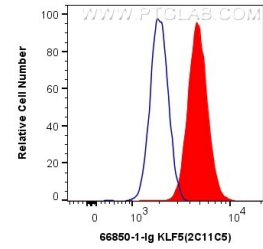
Données de validation sélectionnées



WB result of KLF5 antibody (66850-1-Ig; 1:2000; incubated at room temperature for 1.5 hours) with sh-Control and sh-KLF5 transfected HeLa cells.



Various lysates were subjected to SDS PAGE followed by western blot with 66850-1-Ig (KLF5 antibody) at dilution of 1:2000 incubated at room temperature for 1.5 hours.



1×10^6 HeLa cells were intracellularly stained with 0.5 μ g Anti-Human KLF5 (66850-1-Ig, Clone:2C11C5) (red) labeled with FlexAble CoraLite® Plus 555 Antibody Labeling Kit for Mouse IgG1 (KFA022), or 0.5 μ g Control Antibody. Cells were fixed and permeabilized with Transcription Factor Staining Buffer Kit (PF00011).