

À des fins de recherche uniquement

# Anticorps Monoclonal anti-SMO

Numéro de catalogue: 66851-1-Ig **17 Publications**



## Informations de base

Numéro de catalogue: 66851-1-Ig	Numéro d'acquisition GenBank: BC009989	Méthode de purification: Purification par protéine A
Taille: 150ul, Concentration: 2000 µg/ml by Nanodrop and 1000 µg/ml by Bradford method using BSA as the standard;	Identification du gène (NCBI): smoothened homolog (Drosophila)	CloneNo.: 2B10A11
Hôte: Mouse	Nom complet: smoothened homolog (Drosophila)	Dilutions recommandées: WB 1:1000-1:8000 IHC 1:1000-1:4000 IF 1:50-1:500
Isotype: IgG2b	MW calculé: 787 aa, 86 kDa	
Immunogen Catalog Number: AG25861	MW observés: 86 kDa	

## Applications

<b>Applications testées:</b> IF, IHC, WB, ELISA	<b>Contrôles positifs:</b> WB : tissu cérébral de rat, tissu cérébral de souris IHC : tissu de cancer de la prostate humain, IF : cellules MDCK,
<b>Demandes citées:</b> IF, IHC, WB	
<b>Spécificité de l'espèce:</b> canin, Humain, rat, souris	
<b>Espèces citées:</b> Humain, rat, souris	
<b>Remarque-IHC: il est suggéré de démasquer l'antigène avec un tampon de TE buffer pH 9,0; (*) A défaut, 'le démasquage de l'antigène peut être effectué avec un tampon citrate pH 6,0.</b>	

## Informations générales

Smoothened (SMO) is a G protein-coupled receptor that is a component of the hedgehog (Hh) signaling pathway and is conserved from flies to humans. The Hh pathway plays central roles in animal development and stem-cell function. Defects in Hh signalling lead to birth defects and cancer in humans. Expressed on the primary cilium, SMO interacts with the patched protein, a receptor for Hh proteins.

## Publications notables

Autrice	Pubmed ID	Journal	Application
Mengjie Li	34592340	J Ethnopharmacol	WB
Ana Martin-Hurtado	31554934	Sci Rep	WB
Jiawei Li	34746145	Front Cell Dev Biol	WB

## Stockage

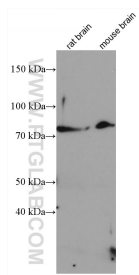
**Stockage:**  
Stocker à -20°C. Stable pendant un an après l'expédition.  
**Tampon de stockage:**  
PBS avec azoture de sodium à 0,02 % et glycérol à 50 % pH 7,3  
L'aliquotage n'est pas nécessaire pour le stockage à -20C

**\*\*\* Les 20ul contiennent 0,1% de BSA.**

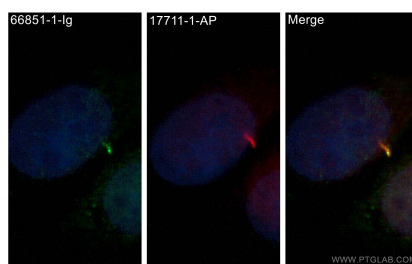
For technical support and original validation data for this product please contact:  
T: 1 (888) 4PTGLAB (1-888-478-4522) (toll free in USA), or 1(312) 455-8498 (outside USA)  
E: proteintech@ptglab.com  
W: ptglab.com

**This product is exclusively available under Proteintech Group brand and is not available to purchase from any other manufacturer.**

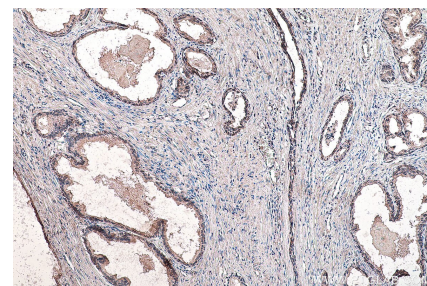
## Données de validation sélectionnées



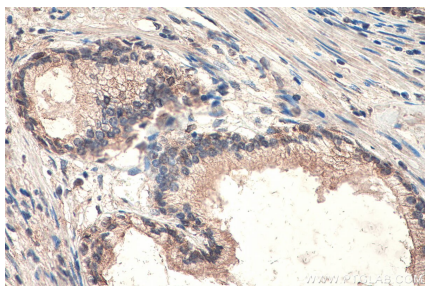
Various lysates were subjected to SDS PAGE followed by western blot with 66851-1-Ig (SMO antibody) at dilution of 1:4000 incubated at room temperature for 1.5 hours.



Immunofluorescent analysis of (4% PFA) fixed MDCK cells using 66851-1-Ig (SMO antibody) at dilution of 1:100 and Alexa Fluor 488-Conjugated AffiniPure Goat Anti-Mouse IgG(H+L).



Immunohistochemical analysis of paraffin-embedded human prostate cancer tissue slide using 66851-1-Ig (SMO antibody) at dilution of 1:2000 (under 10x lens). Heat mediated antigen retrieval with Tris-EDTA buffer (pH 9.0).



Immunohistochemical analysis of paraffin-embedded human prostate cancer tissue slide using 66851-1-Ig (SMO antibody) at dilution of 1:2000 (under 40x lens). Heat mediated antigen retrieval with Tris-EDTA buffer (pH 9.0).