

À des fins de recherche uniquement

# Anticorps Monoclonal anti-S100A8

Numéro de catalogue: 66853-1-Ig **6 Publications**



## Informations de base

<b>Numéro de catalogue:</b> 66853-1-Ig	<b>Numéro d'acquisition GenBank:</b> BC005928	<b>Méthode de purification:</b> Purification par protéine A
<b>Taille:</b> 150ul, Concentration: 1800 µg/ml by Nanodrop and 1000 µg/ml by Bradford method using BSA as the standard;	<b>Identification du gène (NCBI):</b> 6279	<b>CloneNo.:</b> 1G11C8
<b>Hôte:</b> Mouse	<b>Nom complet:</b> S100 calcium binding protein A8	<b>Dilutions recommandées:</b> IHC 1:250-1:1000 IF 1:200-1:800
<b>Isotype:</b> IgG2a	<b>MW calculé</b> 93 aa, 11 kDa	
<b>Immunogen Catalog Number:</b> AG8517		

## Applications

### Applications testées:

IF, IHC, ELISA

### Demandes citées:

IF, IHC, WB

### Spécificité de l'espèce:

Humain

### Espèces citées:

Humain, souris

**Remarque-IHC: il est suggéré de démasquer l'antigène avec un tampon de TE buffer pH 9,0; (\*) A défaut, 'le démasquage de l'antigène peut être effectué avec un tampon citrate pH 6,0.**

### Contrôles positifs:

IHC : tissu d'amygdalite humain, tissu de cancer du col de l'utérus humain, tissu de cancer du sein humain

IF : tissu d'amygdalite humain,

## Informations générales

S100A8 is a member of the S100 family of proteins containing 2 EF-hand calcium-binding motifs. S100 proteins are localized in the cytoplasm and/or nucleus of a wide range of cells, and involved in the regulation of a number of cellular processes such as cell cycle progression and differentiation. S100 genes include at least 13 members which are located as a cluster on chromosome 1q21. This protein may function in the inhibition of casein kinase and as a cytokine.

## Publications notables

Autrice	Pubmed ID	Journal	Application
Bo Hao	36270103	Transl Oncol	IF
Rongfang Shen	36209225	J Transl Med	IHC
Fang Bai	36525776	J Photochem Photobiol B	WB

## Stockage

### Stockage:

Stocker à -20°C. Stable pendant un an après l'expédition.

### Tampon de stockage:

PBS avec azoture de sodium à 0,02 % et glycérol à 50 % pH 7,3

L'aliquotage n'est pas nécessaire pour le stockage à -20C

\*\*\* Les 20ul contiennent 0,1% de BSA.

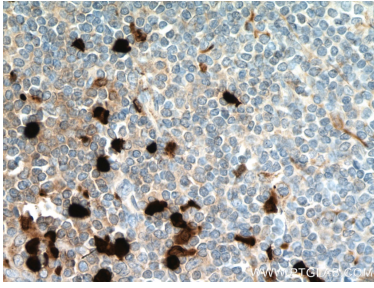
For technical support and original validation data for this product please contact:

T: 1 (888) 4PTGLAB (1-888-478-4522) (toll free in USA), or 1(312) 455-8498 (outside USA)

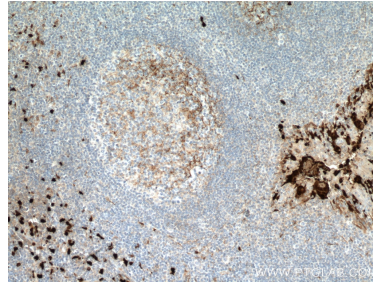
E: proteintech@ptglab.com  
W: ptglab.com

This product is exclusively available under Proteintech Group brand and is not available to purchase from any other manufacturer.

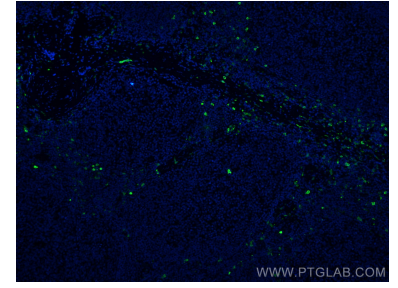
## Données de validation sélectionnées



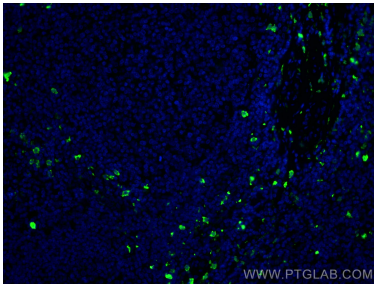
Immunohistochemical analysis of paraffin-embedded human tonsillitis tissue slide using 66853-1-Ig (S100A8 antibody) at dilution of 1:500 (under 40x lens. Heat mediated antigen retrieval with Tris-EDTA buffer (pH 9.0)).



Immunohistochemical analysis of paraffin-embedded human tonsillitis tissue slide using 66853-1-Ig (S100A8 antibody) at dilution of 1:500 (under 10x lens. Heat mediated antigen retrieval with Tris-EDTA buffer (pH 9.0)).



Immunofluorescent analysis of (4% PFA) fixed human tonsillitis tissue using S100A8 antibody (66853-1-Ig, Clone: 1G11C8) at dilution of 1:400 and CoraLite®488-Conjugated AffiniPure Goat Anti-Mouse IgG(H+L).



Immunofluorescent analysis of (4% PFA) fixed human tonsillitis tissue using S100A8 antibody (66853-1-Ig, Clone: 1G11C8) at dilution of 1:400 and CoraLite®488-Conjugated AffiniPure Goat Anti-Mouse IgG(H+L).