

À des fins de recherche uniquement

# Anticorps Monoclonal anti-IL-6R alpha



Numéro de catalogue: 66855-1-Ig

## Informations de base

Numéro de catalogue: 66855-1-Ig	Numéro d'acquisition GenBank: BC132684	Méthode de purification: Purification par protéine G
Taille: 150ul, Concentration: 1200 µg/ml by Nanodrop and 667 µg/ml by Bradford method using BSA as the standard;	Identification du gène (NCBI): 3570	CloneNo.: 2A5F4
Hôte: Mouse	Nom complet: interleukin 6 receptor	Dilutions recommandées: WB 1:1000-1:4000 IHC 1:200-1:800
Isotype: IgG1	MW calculé: 468 aa, 52 kDa	
Immunogen Catalog Number: AG18263	MW observés: 80 kDa	

## Applications

### Applications testées:

IHC, WB, ELISA

### Spécificité de l'espèce:

Humain

**Remarque-IHC: il est suggéré de démasquer l'antigène avec un tampon de TE buffer pH 9.0; (\*) À défaut, le démasquage de l'antigène peut être effectué avec un tampon citrate pH 6,0.**

### Contrôles positifs:

WB : tissu splénique humain, leucocyte de sang périphérique humain

IHC : tissu de cancer du foie humain, tissu d'amygdalite humain

## Informations générales

Interleukin-6 (IL-6) is a pleiotropic cytokine produced by a variety of cells during infection, trauma, and immunological challenge (PMID: 8274730). IL-6 acts via a receptor complex consisting of two distinct membrane-bound glycoproteins, an 80-kDa IL-6-binding subunit (IL-6R alpha, CD126, gp80) and a 130-kDa signal-transducing element (gp130, CD130). After binding of IL-6 to membrane-bound IL-6R alpha, the complex of IL-6 and IL-6R alpha associates with gp130, thus activating the receptor (PMID: 9716487). Expression of gp130 is found in almost all organs while expression of IL-6R alpha is predominantly confined to hepatocytes and leukocyte subpopulations (monocytes, neutrophils, T cells, and B cells) (PMID: 11149892). Soluble form of IL-6R alpha has been found in human serum and urine (PMID: 2529343; 1545125).

## Stockage

### Stockage:

Stocker à -20°C. Stable pendant un an après l'expédition.

### Tampon de stockage:

PBS avec azoture de sodium à 0,02 % et glycérol à 50 % pH 7,3

L'aliquotage n'est pas nécessaire pour le stockage à -20C

\*\*\* Les 20ul contiennent 0,1% de BSA.

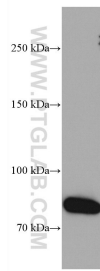
For technical support and original validation data for this product please contact:

T: 1 (888) 4PTGLAB (1-888-478-4522) (toll free in USA), or 1(312) 455-8498 (outside USA)

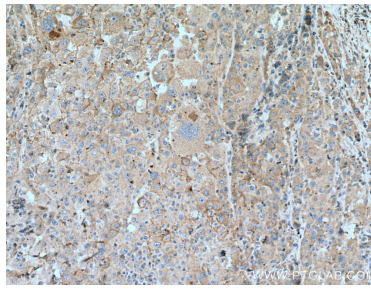
E: proteintech@ptglab.com  
W: ptglab.com

This product is exclusively available under Proteintech Group brand and is not available to purchase from any other manufacturer.

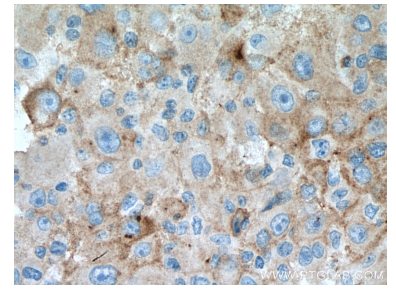
## Données de validation sélectionnées



human spleen tissue were subjected to SDS PAGE followed by western blot with 66855-1-Ig (IL6R alpha antibody) at dilution of 1:2000 incubated at room temperature for 1.5 hours.



Immunohistochemical analysis of paraffin-embedded human liver cancer tissue slide using 66855-1-Ig (IL6R alpha antibody) at dilution of 1:400 (under 10x lens). Heat mediated antigen retrieval with Tris-EDTA buffer (pH 9.0).



Immunohistochemical analysis of paraffin-embedded human liver cancer tissue slide using 66855-1-Ig (IL6R alpha antibody) at dilution of 1:400 (under 40x lens). Heat mediated antigen retrieval with Tris-EDTA buffer (pH 9.0).