

À des fins de recherche uniquement

Anticorps Monoclonal anti-G6PC

Numéro de catalogue: 66860-1-Ig **1 Publications**



Informations de base

Numéro de catalogue: 66860-1-Ig	Numéro d'acquisition GenBank: BC130478	Méthode de purification: Purification par protéine A
Taille: 150ul , Concentration: 2000 µg/ml by Nanodrop and 1000 µg/ml by Bradford method using BSA as the standard;	Identification du gène (NCBI): 2538	CloneNo.: 1E11A5
Hôte: Mouse	Nom complet: glucose-6-phosphatase, catalytic subunit	Dilutions recommandées: WB 1:2000-1:10000 IHC 1:50-1:500
Isotype: IgG1	MW calculé 357 aa, 40 kDa	
Immunogen Catalog Number: AG17839	MW observés: 37-42 kDa	

Applications

Applications testées:

IHC, WB, ELISA

Demandes citées:

WB

Spécificité de l'espèce:

Humain

Espèces citées:

Humain

Remarque-IHC: il est suggéré de démasquer l'antigène avec un tampon de TE buffer pH 9,0; (*) A défaut, 'le démasquage de l'antigène peut être effectué avec un tampon citrate pH 6,0.

Contrôles positifs:

WB : cellules HuH-7, cellules HepG2, cellules L02

IHC : tissu hépatique humain, tissu de cancer du sein humain

Informations générales

Glucose-6-phosphatase- α (G6PC) is a key enzyme in glucose homeostasis that catalyzes the hydrolysis of glucose-6-phosphate to glucose and phosphate in the terminal step of gluconeogenesis and glycogenolysis. G6PC activity is restricted to the liver, the kidney cortex and the small intestine and confers on these three organs the capacity to release glucose into the systemic circulation (PMID: 21983240). The encoded enzyme is anchored to the ER by nine transmembrane helices with the amino (N)-terminus in the lumen and the carboxyl (C)-terminus in the cytoplasm (PMID: 15542400).

Publications notables

Autrice	Pubmed ID	Journal	Application
Sa Yang	35873595	Front Pharmacol	WB

Stockage

Stockage:

Stocker à -20°C. Stable pendant un an après l'expédition.

Tampon de stockage:

PBS avec azoture de sodium à 0,02 % et glycérol à 50 % pH 7,3

L'aliquotage n'est pas nécessaire pour le stockage à -20C

*** Les 20ul contiennent 0,1% de BSA.

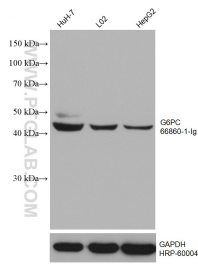
For technical support and original validation data for this product please contact:

T: 1 (888) 4PTGLAB (1-888-478-4522) (toll free in USA), or 1(312) 455-8498 (outside USA)

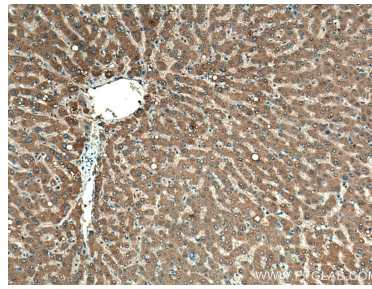
E: proteintech@ptglab.com
W: ptglab.com

This product is exclusively available under Proteintech Group brand and is not available to purchase from any other manufacturer.

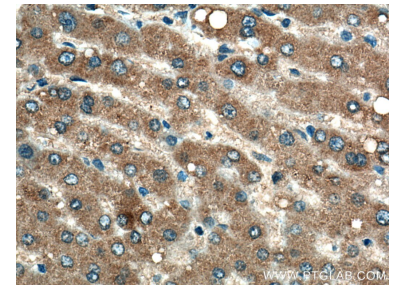
Données de validation sélectionnées



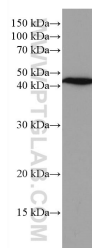
Various lysates were subjected to SDS PAGE followed by western blot with 66860-1-Ig (G6PC antibody) at dilution of 1:5000 incubated at room temperature for 1.5 hours. The membrane was stripped and reblotted with HRP-conjugated GAPDH Monoclonal antibody (HRP-60004) as loading control.



Immunohistochemical analysis of paraffin-embedded human liver tissue slide using 66860-1-Ig (G6PC antibody) at dilution of 1:200 (under 10x lens). Heat mediated antigen retrieval with Tris-EDTA buffer (pH 9.0).



Immunohistochemical analysis of paraffin-embedded human liver tissue slide using 66860-1-Ig (G6PC antibody) at dilution of 1:200 (under 40x lens). Heat mediated antigen retrieval with Tris-EDTA buffer (pH 9.0).



HuH-7 cells were subjected to SDS PAGE followed by western blot with 66860-1-Ig (G6PC antibody) at dilution of 1:2000 incubated at room temperature for 1.5 hours.