

À des fins de recherche uniquement

Anticorps Monoclonal anti-PCK1

Numéro de catalogue: 66862-1-Ig



Informations de base

Numéro de catalogue: 66862-1-Ig	Numéro d'acquisition GenBank: BC023978	Méthode de purification: Purification par protéine G
Taille: 150ul, Concentration: 1400 µg/ml by Nanodrop and 760 µg/ml by Bradford method using BSA as the standard;	Identification du gène (NCBI): 5105	CloneNo.: 2F11B5
Hôte: Mouse	Nom complet: phosphoenolpyruvate carboxykinase 1 (soluble)	Dilutions recommandées: WB 1:1000-1:4000 IHC 1:200-1:800 IF 1:50-1:500
Isotype: IgG1	MW calculé 622 aa, 69 kDa	
Immunogen Catalog Number: AG9720	MW observés: 65-69 kDa	

Applications

Applications testées:

IF, IHC, WB, ELISA

Spécificité de l'espèce:

Humain, porc, rat, souris

Remarque-IHC: il est suggéré de démasquer l'antigène avec un tampon de TE buffer pH 9.0; (*) À défaut, 'le démasquage de l'antigène peut être effectué avec un tampon citrate pH 6.0.

Contrôles positifs:

WB : tissu rénal de porc, tissu hépatique de porc, tissu hépatique de rat

IHC : tissu rénal de souris, tissu de côlon humain, tissu rénal humain

IF : cellules HeLa,

Informations générales

PCK1(Phosphoenolpyruvate carboxykinase, cytosolic) is also named as PEPCK1 and belongs to the phosphoenolpyruvate carboxykinase [GTP] family. It catalyzes the formation of phosphoenolpyruvate from oxaloacetate, with the release of carbon dioxide and GDP. It is also a main control point for the regulation of gluconeogenesis. In eukaryotes there are two isozymes: a cytoplasmic one and a mitochondrial one. Defects in PCK1 are the cause of cytosolic phosphoenolpyruvate carboxykinase deficiency (C-PEPCKD).

Stockage

Stockage:

Stocker à -20°C. Stable pendant un an après l'expédition.

Tampon de stockage:

PBS avec azoture de sodium à 0,02 % et glycérol à 50 % pH 7,3

L'aliquotage n'est pas nécessaire pour le stockage à -20C

*** Les 20ul contiennent 0,1% de BSA.

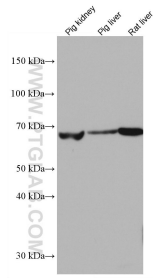
For technical support and original validation data for this product please contact:

T: 1 (888) 4PTGLAB (1-888-478-4522) (toll free
in USA), or 1(312) 455-8498 (outside USA)

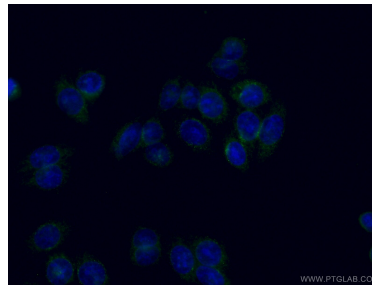
E: proteintech@ptglab.com
W: ptglab.com

This product is exclusively available under Proteintech Group brand and is not available to purchase from any other manufacturer.

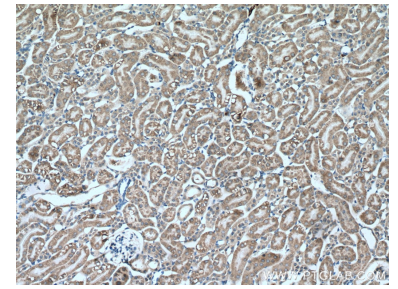
Données de validation sélectionnées



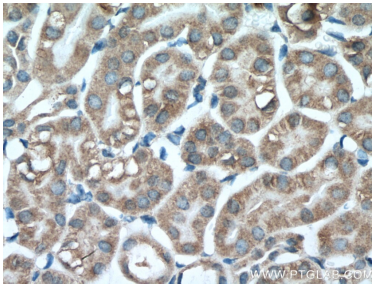
Various lysates were subjected to SDS PAGE followed by western blot with 66862-1-Ig (PCK1 antibody) at dilution of 1:2000 incubated at room temperature for 1.5 hours.



Immunofluorescent analysis of (4% PFA) fixed HeLa cells using 66862-1-Ig (PCK1 antibody) at dilution of 1:100 and CoraLite488-Conjugated AffiniPure Goat Anti-Mouse IgG(H+L).



Immunohistochemical analysis of paraffin-embedded mouse kidney tissue slide using 66862-1-Ig (PCK1 antibody) at dilution of 1:400 (under 10x lens. Heat mediated antigen retrieval with Tris-EDTA buffer (pH 9.0).



Immunohistochemical analysis of paraffin-embedded mouse kidney tissue slide using 66862-1-Ig (PCK1 antibody) at dilution of 1:400 (under 40x lens. Heat mediated antigen retrieval with Tris-EDTA buffer (pH 9.0).