

À des fins de recherche uniquement

# Anticorps Monoclonal anti-GRB2

Numéro de catalogue: 66880-1-Ig

Phare

2 Publications



## Informations de base

Numéro de catalogue: 66880-1-Ig	Numéro d'acquisition GenBank: BC000631	Méthode de purification: Purification par protéine A
Taille: 150ul , Concentration: 1000 µg/ml by Bradford method using BSA as the standard;	Identification du gène (NCBI): 2885	CloneNo.: 1C5D11
Hôte: Mouse	Nom complet: growth factor receptor-bound protein 2	Dilutions recommandées: WB 1:2000-1:10000 IHC 1:250-1:1000
Isotype: IgG1	MW calculé 25 kDa	
Immunogen Catalog Number: AG0395	MW observés: 25 kDa	

## Applications

### Applications testées:

IHC, WB, ELISA

### Demandes citées:

WB

### Spécificité de l'espèce:

Humain, rat, souris

### Espèces citées:

Humain, rat

**Remarque-IHC: il est suggéré de démasquer l'antigène avec un tampon de TE buffer pH 9,0; (\*) A défaut, 'le démasquage de l'antigène peut être 'effectué avec un tampon citrate pH 6,0.**

### Contrôles positifs:

WB : cellules HeLa, cellules HEK-293, cellules HepG2, cellules HSC-T6, cellules Jurkat, cellules NIH/3T3, cellules PC-12

IHC : tissu de cancer du pancréas humain,

## Informations générales

GRB2 (growth factor receptor-bound protein 2) binds the epidermal growth factor receptor and contains one SH2 domain and two SH3 domains. Two alternatively spliced transcript variants encoding different isoforms have been found for this gene. N-SH3 domain of Grb2 was involved in the protein vesicular localization including amyloid- $\beta$  protein precursor (A $\beta$ PP). Involvement of GRB2 in Ras-signaling pathway has been reported, recent finding show that GRB2 may also play a complex role in T and B-cell antigen receptor signaling.

## Publications notables

Autrice	Pubmed ID	Journal	Application
Xiaoqin Yu	32652777	FASEB J	WB
Qiwei Jiang	37294756	Sci Adv	WB

## Stockage

### Stockage:

Stocker à -20°C. Stable pendant un an après l'expédition.

### Tampon de stockage:

PBS avec azoture de sodium à 0,02 % et glycérol à 50 % pH 7,3

L'aliquotage n'est pas nécessaire pour le stockage à -20C

\*\*\* Les 20ul contiennent 0,1% de BSA.

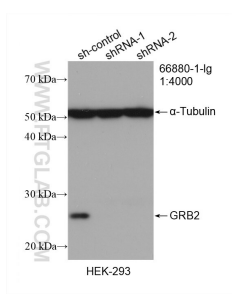
For technical support and original validation data for this product please contact:

T: 1 (888) 4PTGLAB (1-888-478-4522) (toll free in USA), or 1(312) 455-8498 (outside USA)

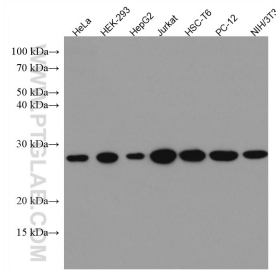
E: proteintech@ptglab.com  
W: ptglab.com

This product is exclusively available under Proteintech Group brand and is not available to purchase from any other manufacturer.

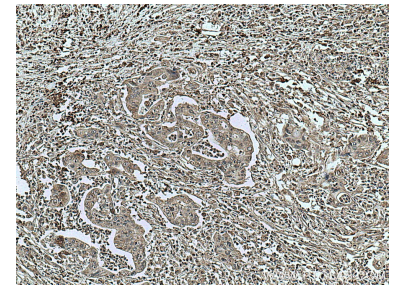
## Données de validation sélectionnées



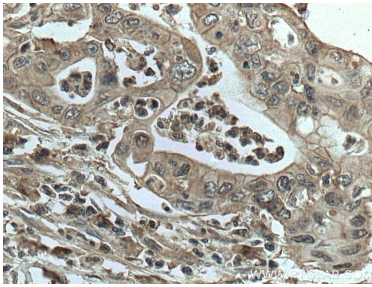
WB result of GRB2 antibody (66880-1-Ig; 1:4000; incubated at room temperature for 1.5 hours) with sh-Control and sh-GRB2 transfected HEK-293 cells.



Various lysates were subjected to SDS PAGE followed by western blot with 66880-1-Ig (GRB2 antibody) at dilution of 1:5000 incubated at room temperature for 1.5 hours.



Immunohistochemical analysis of paraffin-embedded human pancreas cancer tissue slide using 66880-1-Ig (GRB2 antibody) at dilution of 1:500 (under 10x lens. Heat mediated antigen retrieval with Tris-EDTA buffer (pH 9.0).



Immunohistochemical analysis of paraffin-embedded human pancreas cancer tissue slide using 66880-1-Ig (GRB2 antibody) at dilution of 1:500 (under 40x lens. Heat mediated antigen retrieval with Tris-EDTA buffer (pH 9.0).