

À des fins de recherche uniquement

# Anticorps Monoclonal anti-S6 Ribosomal protein



Numéro de catalogue: 66886-1-Ig **9 Publications**

## Informations de base

Numéro de catalogue: 66886-1-Ig	Numéro d'acquisition GenBank: BC000524	Méthode de purification: Purification par protéine A
Taille: 150ul, Concentration: 1800 µg/ml by Nanodrop and 1000 µg/ml by Bradford method using BSA as the standard;	Identification du gène (NCBI): 6194	CloneNo.: 1C3E10
Hôte: Mouse	Nom complet: ribosomal protein S6	Dilutions recommandées: WB 1:5000-1:50000 IF 1:50-1:500
Isotype: IgG2a	MW calculé: 29 kDa	
Immunogen Catalog Number: AG6599	MW observés: 29-32 kDa	

## Applications

### Applications testées:

FC, IF, WB, ELISA

### Demands citées:

FC, IF, WB

### Spécificité de l'espèce:

Humain, rat, souris

### Espèces citées:

Humain, rat, souris

### Contrôles positifs:

WB : cellules HeLa, cellules A431, cellules HEK-293,  
cellules HSC-T6, cellules Jurkat, cellules NIH/3T3,  
cellules RAW 264.7, tissu hépatique de rat

IF : cellules HepG2,

## Informations générales

Ribosomal protein S6 (RPS6), Phosphoprotein NP33. It may play an important role in controlling cell growth and proliferation through the selective translation of particular classes of mRNA. Ribosomal protein S6 is the major substrate of protein kinases in eukaryote ribosomes. The phosphorylation is stimulated by growth factors, tumor promoting agents, and mitogens. It is dephosphorylated at growth arrest. Phosphorylated at Ser-235 and Ser-236 by RPS6KA1 and RPS6KA3; phosphorylation at these sites facilitates the assembly of the preinitiation complex.

## Publications notables

Autrice	Pubmed ID	Journal	Application
Yifan Hong	34649140	Ecotoxicol Environ Saf	WB
Dongdong Yang	36417878	Cell Rep	WB
Yaoliang Tang	35596155	BMC Cancer	WB

## Stockage

### Stockage:

Stocker à -20°C. Stable pendant un an après l'expédition.

### Tampon de stockage:

PBS avec azoture de sodium à 0,02 % et glycérol à 50 % pH 7,3

L'aliquotage n'est pas nécessaire pour le stockage à -20C

\*\*\* Les 20ul contiennent 0,1% de BSA.

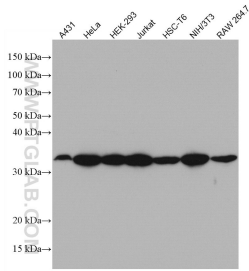
For technical support and original validation data for this product please contact:

T: 1 (888) 4PTGLAB (1-888-478-4522) (toll free  
in USA), or 1(312) 455-8498 (outside USA)

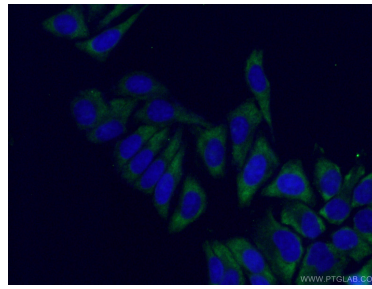
E: [proteintech@ptglab.com](mailto:proteintech@ptglab.com)  
W: [ptglab.com](http://ptglab.com)

This product is exclusively available under Proteintech Group brand and is not available to purchase from any other manufacturer.

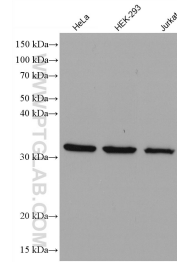
## Données de validation sélectionnées



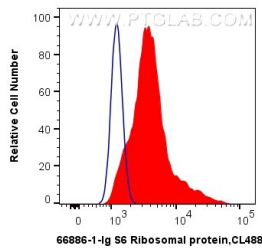
Various lysates were subjected to SDS PAGE followed by western blot with 66886-1-Ig (S6 Ribosomal protein antibody) at dilution of 1:500 incubated at room temperature for 1.5 hours.



Immunofluorescent analysis of (-20°C Ethanol) fixed HepG2 cells using 66886-1-Ig (S6 Ribosomal protein antibody) at dilution of 1:100 and CoraLite488-Conjugated AffiniPure Goat Anti-Mouse IgG(H+L).



Various lysates were subjected to SDS PAGE followed by western blot with 66886-1-Ig (S6 Ribosomal protein antibody) at dilution of 1:15000 incubated at room temperature for 1.5 hours.



1X10<sup>6</sup> HepG2 cells were intracellularly stained with 0.4 µg Anti-Human S6 Ribosomal protein (66886-1-Ig, Clone:1C3E10) and CoraLite®488-Conjugated AffiniPure Goat Anti-Mouse IgG(H+L) at dilution 1:1000 (red), or 0.4 µg Control Antibody. Cells were fixed with 4% PFA and permeabilized with Flow Cytometry Perm Buffer (PF00011-C).