

À des fins de recherche uniquement

Anticorps Monoclonal anti-DLC1

Numéro de catalogue: 66894-1-Ig



Informations de base

Numéro de catalogue: 66894-1-Ig	Numéro d'acquisition GenBank: BC054511	Méthode de purification: Purification par protéine G
Taille: 150ul , Concentration: 2100 µg/ml by Nanodrop and 980 µg/ml by Bradford method using BSA as the standard;	Identification du gène (NCBI): 10395	CloneNo.: 1G10H12
Hôte: Mouse	Nom complet: deleted in liver cancer 1	Dilutions recommandées: WB 1:2000-1:10000 IF 1:400-1:1600
Isotype: IgG1	MW calculé: 171 kDa	
Immunogen Catalog Number: AG24404	MW observés: 115 kDa	

Applications

Applications testées: IF, WB, ELISA	Contrôles positifs:
Spécificité de l'espèce: Humain	WB : cellules NCI-H1299, cellules A549, cellules HepG2 IF : cellules A375, cellules HepG2

Informations générales

Deleted in Liver Cancer 1 (DLC1) is a RhoGAP-containing tumor suppressor that inhibits angiogenesis by repressing VEGF production in epithelial cells. DLC1 is often down-regulated in a variety of cancers, such as those of the liver, lung, breast, stomach, brain, colon and prostate due to either genomic deletion or aberrant DNA methylation.

Stockage

Stockage:
Stocker à -20°C. Stable pendant un an après l'expédition.
Tampon de stockage:
PBS avec azoture de sodium à 0,02 % et glycérol à 50 % pH 7,3
L'aliquotage n'est pas nécessaire pour le stockage à -20C

*** Les 20ul contiennent 0,1% de BSA.

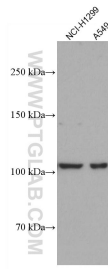
For technical support and original validation data for this product please contact:

T: 1 (888) 4PTGLAB (1-888-478-4522) (toll free in USA), or 1(312) 455-8498 (outside USA)

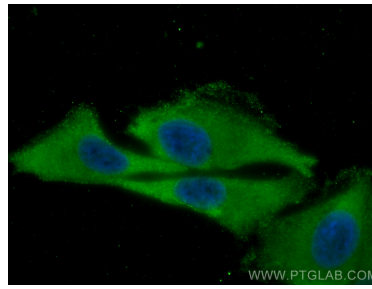
E: proteintech@ptglab.com
W: ptglab.com

This product is exclusively available under Proteintech Group brand and is not available to purchase from any other manufacturer.

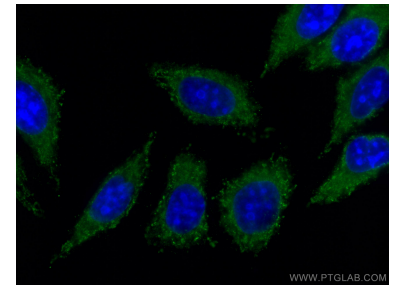
Données de validation sélectionnées



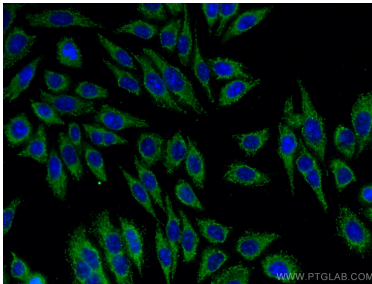
Various lysates were subjected to SDS PAGE followed by western blot with 66894-1-Ig (DLC1 antibody) at dilution of 1:5000 incubated at room temperature for 1.5 hours.



Immunofluorescent analysis of (-20°C Methanol) fixed A375 cells using DLC1 antibody (66894-1-Ig, Clone: 1G10H12) at dilution of 1:800 and CoraLite®488-Conjugated AffiniPure Goat Anti-Mouse IgG(H+L).



Immunofluorescent analysis of (-20°C Methanol) fixed HepG2 cells using DLC1 antibody (66894-1-Ig, Clone: 1G10H12) at dilution of 1:400 and CoraLite®488-Conjugated AffiniPure Goat Anti-Mouse IgG(H+L).



Immunofluorescent analysis of (-20°C Methanol) fixed HepG2 cells using DLC1 antibody (66894-1-Ig, Clone: 1G10H12) at dilution of 1:400 and CoraLite®488-Conjugated AffiniPure Goat Anti-Mouse IgG(H+L).