

À des fins de recherche uniquement

# Anticorps Monoclonal anti-GLI1

Numéro de catalogue: 66905-1-Ig

Phare

53 Publications



## Informations de base

<b>Numéro de catalogue:</b> 66905-1-Ig	<b>Numéro d'acquisition GenBank:</b> BC013000	<b>Méthode de purification:</b> Purification par protéine A
<b>Taille:</b> 150ul , Concentration: 1000 µg/ml by Bradford method using BSA as the standard;	<b>Identification du gène (NCBI):</b> 2735	<b>CloneNo.:</b> 1D2B2
<b>Hôte:</b> Mouse	<b>Nom complet:</b> GLI family zinc finger 1	<b>Dilutions recommandées:</b> WB 1:5000-1:50000 IF 1:400-1:1600
<b>Isotype:</b> IgG1	<b>MW calculé:</b> 1106 aa, 118 kDa	
<b>Immunogen Catalog Number:</b> AG27832	<b>MW observés:</b> 150 kDa	

## Applications

### Applications testées:

IF, WB, ELISA

### Demandes citées:

ColP, IF, IHC, WB

### Spécificité de l'espèce:

Humain, porc, rat, souris

### Espèces citées:

Humain, rat, souris

### Contrôles positifs:

**WB :** cellules A549, cellules BxPC-3, cellules C6, cellules HEK-293, cellules MCF-7, cellules MDA-MB-231, cellules NCI-H1299, cellules U-251, tissu cérébral de porc, tissu cérébral de rat, tissu cérébral de souris, tissu hépatique de rat, tissu hépatique de souris, tissu testiculaire humain

**IF :** cellules HeLa,

## Informations générales

GLI1, also known as Glioma-associated oncogene, is a 1106 amino acid protein, which belongs to the GLI C2H2-type zinc-finger protein family. GLI1 is detected in testis and Also expressed in the brain with highest expression in the cerebellum, optic nerve and olfactory tract. GLI1 is tethered in the cytoplasm by binding to SUFU (PubMed:10806483). GLI1 is activated and translocated to the nucleus promoted by interaction with STK36 (PubMed:10806483). Phosphorylation of GLI1 by ULK3 may promote nuclear localization (PubMed:19878745). GLI1 as a transcriptional activator may regulate the transcription of specific genes during normal development (PubMed:19706761). GLI1 plays a role in craniofacial development and digital development, as well as development of the central nervous system and gastrointestinal tract and Mediates SHH signaling (PubMed:19706761). GLI1 plays a role in cell proliferation and differentiation via its role in SHH signaling.

## Publications notables

Autrice	Pubmed ID	Journal	Application
Qian Wang	32999044	Mol Cancer Ther	WB
Daosen Chen	34659557	J Cancer	WB,IHC
Yijia Jia	34522723	Regen Ther	IHC

## Stockage

### Stockage:

Stocker à -20°C. Stable pendant un an après l'expédition.

### Tampon de stockage:

PBS avec azoture de sodium à 0,02 % et glycérol à 50 % pH 7,3

L'aliquotage n'est pas nécessaire pour le stockage à -20C

\*\*\* Les 20ul contiennent 0,1% de BSA.

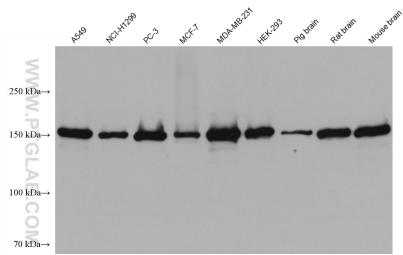
For technical support and original validation data for this product please contact:

T: 1 (888) 4PTGLAB (1-888-478-4522) (toll free in USA), or 1(312) 455-8498 (outside USA)

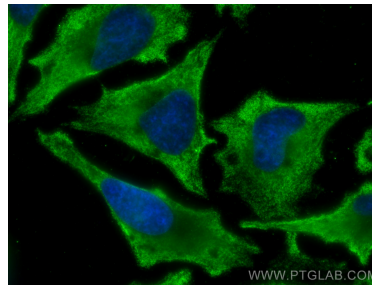
E: proteintech@ptglab.com  
W: ptglab.com

This product is exclusively available under Proteintech Group brand and is not available to purchase from any other manufacturer.

## Données de validation sélectionnées



Various lysates were subjected to SDS PAGE followed by western blot with 66905-1-Ig (GLI1 antibody) at dilution of 1:20000 incubated at room temperature for 1.5 hours.



Immunofluorescent analysis of (-20°C Ethanol) fixed HeLa cells using GLI1 antibody (66905-1-Ig, Clone: 1D2B2 ) at dilution of 1:800 and CoraLite®488-Conjugated AffiniPure Goat Anti-Mouse IgG(H+L).