

À des fins de recherche uniquement

Anticorps Monoclonal anti-CDC25C

Numéro de catalogue: 66912-1-Ig **4 Publications**



Informations de base

Numéro de catalogue: 66912-1-Ig	Numéro d'acquisition GenBank: BC019089	Méthode de purification: Purification par protéine A
Taille: 150ul , Concentration: 2200 µg/ml by 995 Nanodrop and 1000 µg/ml by Bradford method using BSA as the standard;	Identification du gène (NCBI): cell division cycle 25 homolog C (S. pombe)	CloneNo.: 2B6B12
Hôte: Mouse	Nom complet: cell division cycle 25 homolog C (S. pombe)	Dilutions recommandées: WB 1:5000-1:50000
Isotype: IgG1	MW calculé 473 aa, 53 kDa	
Immunogen Catalog Number: AG10240	MW observés: 46-53 kDa	

Applications

Applications testées:

FC, WB, ELISA

Demandes citées:

WB

Spécificité de l'espèce:

Humain, rat, souris

Espèces citées:

Humain, souris

Contrôles positifs:

WB : cellules HeLa, cellules HEK-293, cellules HepG2, cellules HSC-T6, cellules Jurkat, cellules K-562, cellules NIH/3T3, cellules PC-12, cellules Raji

Informations générales

The cell division cycle 25 (CDC25) family of proteins are highly conserved dual specificity phosphatases that activate cyclin-dependent kinase (CDK) complexes, which in turn regulate progression through the cell division cycle. CDC25C (cell division cycle 25 homolog C) is one of the 3 isoforms of CDC25 in mammalian cells. It is present in the cytoplasm of asynchronously growing human cells (PMID:10330186). And it may be phosphorylated by its own substrate, an active cdc2-cyclin B complex, to create an autoactivation loop (PMID:7937793). It can be hyperphosphorylated to get the active form of 70 kDa (PMID:18296513). CDC25C has some isoforms with molecular mass of 46-53 kDa.

Publications notables

Autrice	Pubmed ID	Journal	Application
Silu Hou	36427601	Food Chem Toxicol	WB
Jun Ma	34820015	Oncol Lett	WB
Ming Li	36526012	Toxicology	WB

Stockage

Stockage:

Stocker à -20°C. Stable pendant un an après l'expédition.

Tampon de stockage:

PBS avec azoture de sodium à 0,02 % et glycérol à 50 % pH 7,3

L'aliquotage n'est pas nécessaire pour le stockage à -20C

*** Les 20ul contiennent 0,1% de BSA.

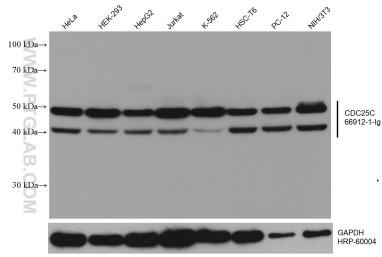
For technical support and original validation data for this product please contact:

T: 1 (888) 4PTGLAB (1-888-478-4522) (toll free in USA), or 1(312) 455-8498 (outside USA)

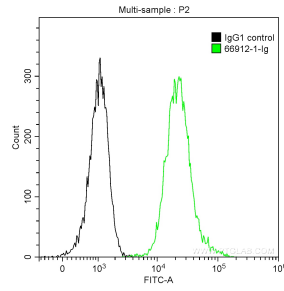
E: proteintech@ptglab.com
W: ptglab.com

This product is exclusively available under Proteintech Group brand and is not available to purchase from any other manufacturer.

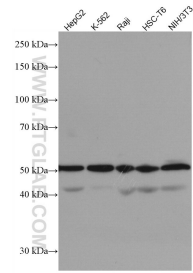
Données de validation sélectionnées



Various lysates were subjected to SDS PAGE followed by western blot with 66912-1-Ig (CDC25C antibody) at dilution of 1:10000 incubated at room temperature for 1.5 hours. The membrane was stripped and reblotted with HRP-conjugated GAPDH Monoclonal antibody (HRP-60004) as loading control.



1X10⁶ K-562 cells were intracellularly stained with 0.2 ug Anti-Human CDC25C (66912-1-Ig, Clone:2B6B12) and CoraLite®488-Conjugated AffiniPure Goat Anti-Mouse IgG(H+L) at dilution 1:1000 (green), and 0.2 ug Control Antibody. Cells were fixed with 90% MeOH.



Various lysates were subjected to SDS PAGE followed by western blot with 66912-1-Ig (CDC25C antibody) at dilution of 1:3000 incubated at room temperature for 1.5 hours.