

À des fins de recherche uniquement

# Anticorps Monoclonal anti-Cathepsin L



Numéro de catalogue: 66914-1-Ig

Phare

1 Publications

## Informations de base

Numéro de catalogue:

66914-1-Ig

Numéro d'acquisition GenBank:

BC012612

Méthode de purification:

Purification par protéine A

Taille:

150ul, Concentration: 1400 µg/ml by Nanodrop and 1000 µg/ml by Bradford method using BSA as the standard;

Identification du gène (NCBI):

1514

CloneNo.:

1A12G8

Nom complet:

cathepsin L1

Dilutions recommandées:

WB 1:1000-1:8000

Hôte:

Mouse

MW calculé

38 kDa

Isotype:

IgG2b

MW observés:

43 kDa

Immunogen Catalog Number:

AG27951

## Applications

Applications testées:

WB, ELISA

Contrôles positifs:

WB : cellules A549, cellules HeLa, cellules HepG2, cellules HUVEC, cellules NCI-H1299

Demandes citées:

WB

Spécificité de l'espèce:

Humain, rat, souris

Espèces citées:

Humain

## Informations générales

CTSL1 (Cathepsin L1) is also named as CTSL and MEP, belongs to the peptidase C1 family. It is a lysosomal proteinase whose expression is also up-regulated in the skeletal muscle during starvation (PMID:20088826). It plays an intracellular role in normal intestinal epithelial polarization and initiation of neoplasia (PMID:17622569). CTSL1 also improves cardiac function and inhibits cardiac hypertrophy, inflammation, and fibrosis through blocking AKT/GSK3B signaling (PMID:19096818). The full length protein is 38 kDa with a signal peptide, two propeptide and a glycosylation site. It has been detected the 36 kDa, 39 kDa, 29 kDa and 21 kDa in rat gastrocnemius muscle. These forms of cathepsin L could either be attributed to differences in glycosylation or to partial processing of the proenzyme. (PMID:11696001)

## Publications notables

Autrice	Pubmed ID	Journal	Application
Pingping Liu	36382580	Cancer Sci	WB

## Stockage

Stockage:

Stocker à -20°C. Stable pendant un an après l'expédition.

Tampon de stockage:

PBS avec azoture de sodium à 0,02 % et glycérol à 50 % pH 7,3

L'aliquotage n'est pas nécessaire pour le stockage à -20C

\*\*\* Les 20ul contiennent 0,1% de BSA.

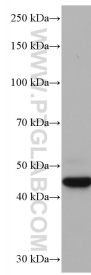
For technical support and original validation data for this product please contact:

T: 1 (888) 4PTGLAB (1-888-478-4522) (toll free in USA), or 1(312) 455-8498 (outside USA)

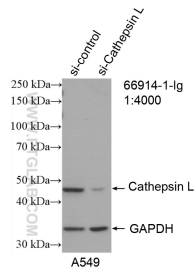
E: proteintech@ptglab.com  
W: ptglab.com

This product is exclusively available under Proteintech Group brand and is not available to purchase from any other manufacturer.

## Données de validation sélectionnées



A549 cells were subjected to SDS PAGE followed by western blot with 66914-1-Ig (Cathepsin L antibody) at dilution of 1:5000 incubated at room temperature for 1.5 hours.



WB result of Cathepsin L antibody (66914-1-Ig; 1:6000; incubated at room temperature for 1.5 hours) with sh-Control and sh-Cathepsin L transfected A549 cells.