

À des fins de recherche uniquement

Anticorps Monoclonal anti-NFATC2

Numéro de catalogue: 66917-1-Ig



Informations de base

Numéro de catalogue: 66917-1-Ig	Numéro d'acquisition GenBank: BC136418	Méthode de purification: Purification par protéine G
Taille: 150ul, Concentration: 913 µg/ml by Bradford method using BSA as the standard;	Identification du gène (NCBI): 4773	CloneNo.: 1F3B2
Hôte: Mouse	Nom complet: nuclear factor of activated T-cells, cytoplasmic, calcineurin-dependent 2	Dilutions recommandées: WB 1:1000-1:4000 IF 1:50-1:500
Isotype: IgG1	MW calculé 925 aa, 100 kDa	
Immunogen Catalog Number: AG17990	MW observés: 135-140 kDa	

Applications

Applications testées:
FC, IF, IHC, WB, ELISA

Spécificité de l'espèce:
Humain, souris

Remarque-IHC: il est suggéré de démasquer l'antigène avec un tampon de TE buffer pH 9.0; (*) À défaut, le démasquage de l'antigène peut être effectué avec un tampon citrate pH 6,0.

Contrôles positifs:

WB : cellules Ramos, cellules Daudi, cellules Jurkat

IHC : tissu de cancer du sein humain, tissu de lymphome humain, tissu testiculaire de souris

IF : cellules HepG2,

Informations générales

Nuclear factor of activated T-cells, cytoplasmic 2 (NFATC2), also named NFAT1, or NFATP, is a 925 amino acid protein, which is expressed in thymus, spleen, heart, testis, brain, placenta, muscle and pancreas. Cytoplasmic for the phosphorylated form and nuclear after activation that is controlled by calcineurin-mediated dephosphorylation. Rapid nuclear exit of NFATC is thought to be one mechanism by which cells distinguish between sustained and transient calcium signals. The subcellular localization of NFATC plays a key role in the regulation of gene transcription. NFATC2 plays a role in the inducible expression of cytokine genes in T-cells, especially in the induction of the IL-2, IL-3, IL-4, TNF-alpha or GM-CSF. NFATC2 promotes invasive migration through the activation of GPC6 expression and WNT5A signaling pathway. The calculated molecular weight of NFATC2 is about 97-100 kDa, but the modified NFATC2 protein is about 135 kDa.

Stockage

Stockage:

Stocker à -20°C. Stable pendant un an après l'expédition.

Tampon de stockage:

PBS avec azoture de sodium à 0,02 % et glycérol à 50 % pH 7,3

L'aliquotage n'est pas nécessaire pour le stockage à -20C

*** Les 20ul contiennent 0,1% de BSA.

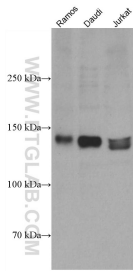
For technical support and original validation data for this product please contact:

T: 1 (888) 4PTGLAB (1-888-478-4522) (toll free
in USA), or 1(312) 455-8498 (outside USA)

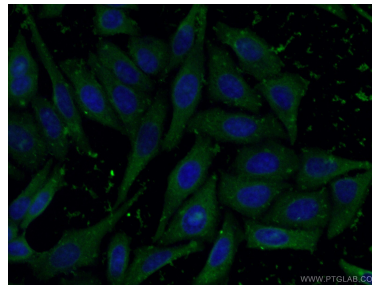
E: proteintech@ptglab.com
W: ptglab.com

This product is exclusively available under Proteintech Group brand and is not available to purchase from any other manufacturer.

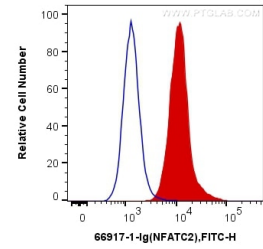
Données de validation sélectionnées



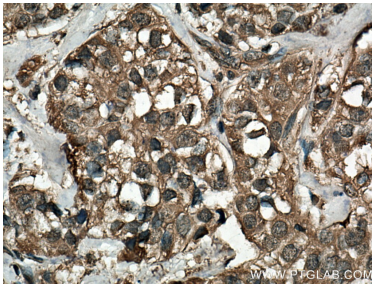
Various lysates were subjected to SDS PAGE followed by western blot with 66917-1-Ig (NFATC2 antibody) at dilution of 1:2000 incubated at room temperature for 1.5 hours.



Immunofluorescent analysis of (-20°C Ethanol) fixed HepG2 cells using 66917-1-Ig (NFATC2 antibody) at dilution of 1:100 and CoraLite488-Conjugated AffiniPure Goat Anti-Mouse IgG(H+L).



1×10^6 Jurkat cells were intracellularly stained with 0.2 ug Anti-Human NFATC2 (66917-1-Ig, Clone:1F3B2) and CoraLite®488-Conjugated AffiniPure Goat Anti-Mouse IgG(H+L) at dilution 1:1000 (red), or 0.2 ug Mouse IgG1 Isotype Control (66360-1-Ig, Clone: T1F8D3F10) (blue). Cells were fixed with 4% PFA and permeabilized with Flow Cytometry Perm Buffer (PF00011-C).



Immunohistochemical analysis of paraffin-embedded human breast cancer tissue slide using 66917-1-Ig (NFATC2 antibody) at dilution of 1:200 (under 40x lens). Heat mediated antigen retrieval with Tris-EDTA buffer (pH 9.0).