

À des fins de recherche uniquement

Anticorps Monoclonal anti-PTGER4

Numéro de catalogue: 66921-1-Ig **1 Publications**



Informations de base

| | | |
|---|--|---|
| Numéro de catalogue: 66921-1-Ig | Numéro d'acquisition GenBank: BC101534 | Méthode de purification: Purification par protéine A |
| Taille: 150ul, Concentration: 1200 µg/ml by Nanodrop and 1000 µg/ml by Bradford method using BSA as the standard; | Identification du gène (NCBI): 5734 | CloneNo.: 4A2A12 |
| Hôte: Mouse | Nom complet: prostaglandin E receptor 4 (subtype EP4) | Dilutions recommandées: WB 1:5000-1:50000 IHC 1:500-1:2000 IF 1:200-1:800 |
| Isotype: IgG2b | MW calculé 488 aa, 53 kDa | |
| Immunogen Catalog Number: AG19262 | MW observés: 53 kDa | |

Applications

Applications testées:
FC, IF, IHC, WB, ELISA

Demandes citées:
WB

Spécificité de l'espèce:
Humain, porc, rat, souris

Espèces citées:
souris

Remarque-IHC: il est suggéré de démasquer l'antigène avec un tampon de TE buffer pH 9,0; (*) À défaut, le démasquage de l'antigène peut être effectué avec un tampon citrate pH 6,0.

Contrôles positifs:

WB : tissu cérébral de porc, cellules Jurkat, cellules K-562, tissu cérébral de rat, tissu cérébral de souris

IHC : tissu d'hyperplasie de la prostate humaine, tissu cérébral de souris

IF : tissu cérébral de souris,

Informations générales

Publications notables

| Autrice | Pubmed ID | Journal | Application |
|----------|-----------|------------------------------|-------------|
| Yang Liu | 35764614 | Signal Transduct Target Ther | WB |

Stockage

Stockage:

Stocker à -20°C. Stable pendant un an après l'expédition.

Tampon de stockage:

PBS avec azoture de sodium à 0,02 % et glycérol à 50 % pH 7,3

L'aliquotage n'est pas nécessaire pour le stockage à -20C

***** Les 20ul contiennent 0,1% de BSA.**

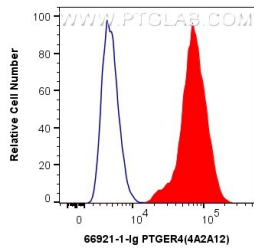
For technical support and original validation data for this product please contact:

T: 1 (888) 4PTGLAB (1-888-478-4522) (toll free in USA), or 1(312) 455-8498 (outside USA)

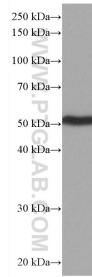
E: proteintech@ptglab.com
W: ptglab.com

This product is exclusively available under Proteintech Group brand and is not available to purchase from any other manufacturer.

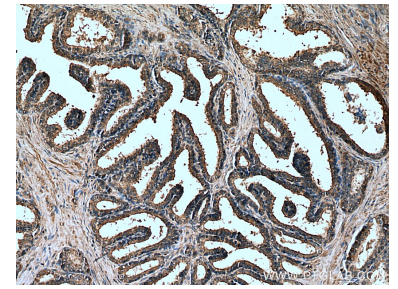
Données de validation sélectionnées



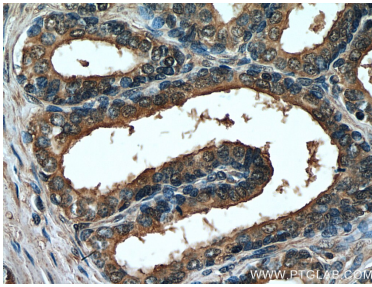
1X10⁶ HepG2 cells were intracellularly stained with 0.4 ug Anti-Human PTGER4 (66921-1-Ig, Clone:4A2A12) and CoraLite®488-Conjugated AffiniPure Goat Anti-Mouse IgG(H+L) at dilution 1:1000 (red), or 0.4 ug Mouse IgG2b Isotype Control (MPC-11) (65128-1-Ig, Clone: MPC-11) (blue). Cells were fixed with 4% PFA and permeabilized with Flow Cytometry Perm Buffer (PF00011-C).



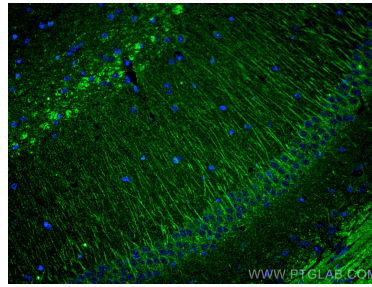
pig brain tissue were subjected to SDS PAGE followed by western blot with 66921-1-Ig (PTGER4 antibody) at dilution of 1:10000 incubated at room temperature for 1.5 hours.



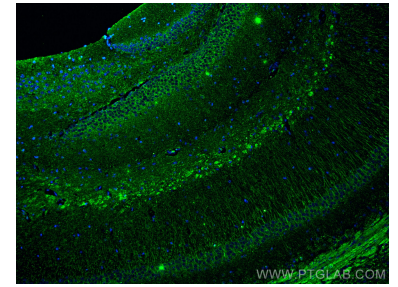
Immunohistochemical analysis of paraffin-embedded human prostate hyperplasia tissue slide using 66921-1-Ig (PTGER4 antibody) at dilution of 1:1000 (under 10x lens). Heat mediated antigen retrieval with Tris-EDTA buffer (pH 9.0).



Immunohistochemical analysis of paraffin-embedded human prostate hyperplasia tissue slide using 66921-1-Ig (PTGER4 antibody) at dilution of 1:1000 (under 40x lens). Heat mediated antigen retrieval with Tris-EDTA buffer (pH 9.0).



Immunofluorescent analysis of (4% PFA) fixed mouse brain tissue using PTGER4 antibody (66921-1-Ig, Clone: 4A2A12) at dilution of 1:400 and CoraLite®488-Conjugated AffiniPure Goat Anti-Mouse IgG(H+L).



Immunofluorescent analysis of (4% PFA) fixed mouse brain tissue using PTGER4 antibody (66921-1-Ig, Clone: 4A2A12) at dilution of 1:400 and CoraLite®488-Conjugated AffiniPure Goat Anti-Mouse IgG(H+L).