

À des fins de recherche uniquement

# Anticorps Monoclonal anti-Integrin Beta 4



Numéro de catalogue: 66922-2-Ig

## Informations de base

Numéro de catalogue: 66922-2-Ig	Numéro d'acquisition GenBank: BC126411	Méthode de purification: Purification par protéine A
Taille: 150ul, Concentration: 2300 µg/ml by Nanodrop and 1000 µg/ml by Bradford method using BSA as the standard;	Identification du gène (NCBI): 3691	CloneNo.: 1C2A11
Hôte: Mouse	Nom complet: integrin, beta 4	Dilutions recommandées: WB 1:5000-1:50000
Isotype: IgG1	MW calculé 1752 aa, 195 kDa	
Immunogen Catalog Number: AG17395	MW observés: 200-210 kDa	

## Applications

Applications testées: WB, ELISA	Contrôles positifs: WB : cellules HeLa, cellules A549, cellules BxPC-3, cellules MCF-7, cellules SKOV-3, cellules SW-1990
Spécificité de l'espèce: Humain	

## Informations générales

Integrins are cell adhesion receptors that are heterodimers composed of non-covalently associated alpha and beta subunits. Integrin beta-4 is predominantly expressed in squamous epithelial cells, endothelial cells, immature thymocytes, Schwann cells, and fibroblasts of the peripheral nervous system (PMID: 28084395). Integrin beta-4 pairs with alpha-6, and the heterodimeric integrin alpha-6/beta-4 is a receptor for laminin. Integrin alpha-6/beta-4 plays a critical structural role in the hemidesmosome of epithelial cells, and also plays a role in the invasive and metastatic phenotype of various cancers.

## Stockage

Stockage:  
Stocker à -20°C. Stable pendant un an après l'expédition.  
Tampon de stockage:  
PBS avec azoture de sodium à 0,02 % et glycérol à 50 % pH 7,3  
L'aliquotage n'est pas nécessaire pour le stockage à -20C

\*\*\* Les 20ul contiennent 0,1% de BSA.

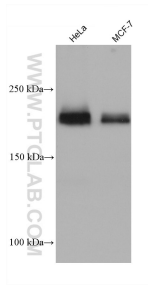
For technical support and original validation data for this product please contact:

T: 1 (888) 4PTGLAB (1-888-478-4522) (toll free  
in USA), or 1(312) 455-8498 (outside USA)

E: proteintech@ptglab.com  
W: ptglab.com

This product is exclusively available under Proteintech Group brand and is not available to purchase from any other manufacturer.

## Données de validation sélectionnées



Various lysates were subjected to SDS PAGE followed by western blot with 66922-2-Ig (Integrin Beta 4 antibody) at dilution of 1:10000 incubated at room temperature for 1.5 hours.