

À des fins de recherche uniquement

# Anticorps Monoclonal anti-CFTR

Numéro de catalogue: 66928-1-Ig



## Informations de base

<b>Numéro de catalogue:</b> 66928-1-Ig	<b>Numéro d'acquisition GenBank:</b> NM_000492	<b>Méthode de purification:</b> Purification par protéine G
<b>Taille:</b> 150ul, Concentration: 1900 µg/ml by Nanodrop and 1000 µg/ml by Bradford method using BSA as the standard;	<b>Identification du gène (NCBI):</b> 1080	<b>CloneNo.:</b> 2F4A8
<b>Hôte:</b> Mouse	<b>Nom complet:</b> cystic fibrosis transmembrane conductance regulator (ATP-binding cassette sub-family C, member 7)	<b>Dilutions recommandées:</b> WB 1:5000-1:50000
<b>Isotype:</b> IgG1	<b>MW calculé</b> 168 kDa	
<b>Immunogen Catalog Number:</b> AG27810	<b>MW observés:</b> 150 kDa	

## Applications

**Applications testées:**  
WB, ELISA

**Spécificité de l'espèce:**  
Humain

### Contrôles positifs:

**WB:** Calu-3 cells, cellules A375, cellules A431, cellules A549, cellules Caco-2, cellules HeLa, cellules HepG2, cellules HT-29, cellules MCF-7, cellules MOLT-4, cellules NCI-H1299, tissu cérébral de lapin, tissu cérébral de rat, tissu cérébral de souris

## Informations générales

CFTR is a member of the ATP-binding cassette (ABC) family of membrane transport proteins, functioning as a chloride channel responsible for ion flow across epithelial surfaces of lung, sinuses, pancreas, intestine, and liver. Mutations of CFTR cause cystic fibrosis (CF), a disorder affecting the respiratory, digestive, reproductive systems and sweat glands.

## Stockage

**Stockage:**  
Stocker à -20°C. Stable pendant un an après l'expédition.

**Tampon de stockage:**  
PBS avec azoture de sodium à 0,02 % et glycérol à 50 % pH 7,3

L'aliquotage n'est pas nécessaire pour le stockage à -20C

\*\*\* Les 20ul contiennent 0,1% de BSA.

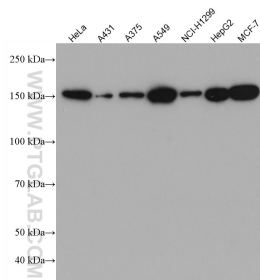
For technical support and original validation data for this product please contact:

T: 1 (888) 4PTGLAB (1-888-478-4522) (toll free  
in USA), or 1(312) 455-8498 (outside USA)

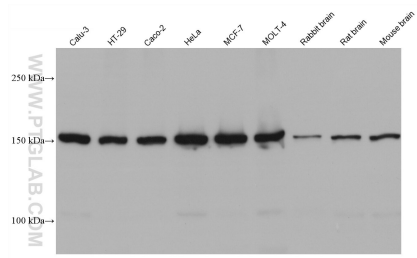
E: [proteintech@ptglab.com](mailto:proteintech@ptglab.com)  
W: [ptglab.com](http://ptglab.com)

This product is exclusively available under Proteintech Group brand and is not available to purchase from any other manufacturer.

## Données de validation sélectionnées



Various lysates were subjected to SDS PAGE followed by western blot with 66928-1-Ig (CFTR antibody) at dilution of 1:2000 incubated at room temperature for 1.5 hours.



Various lysates were subjected to SDS PAGE followed by western blot with 66928-1-Ig (CFTR antibody) at dilution of 1:10000 incubated at room temperature for 1.5 hours.