

À des fins de recherche uniquement

Anticorps Monoclonal anti-Protein A

Numéro de catalogue: 66945-1-Ig 2 Publications



Informations de base

Numéro de catalogue: 66945-1-Ig	Numéro d'acquisition GenBank: EU695225	Méthode de purification: Purification par protéine G
Taille: 150ul , Concentration: 1500 µg/ml by Nanodrop and 1000 µg/ml by Bradford method using BSA as the standard;	Identification du gène (NCBI): Nom complet:	CloneNo.: 1G6A6
Hôte: Mouse		Dilutions recommandées: WB 1:2000-1:10000
Isotype: IgG2a		

Applications

Applications testées: WB, ELISA	Contrôles positifs: WB : recombinant protein, Protéine recombinante
Demandes citées: IP	
Spécificité de l'espèce: Staphylococcus aureus	
Espèces citées: Humain	

Informations générales

Protein A is a surface protein of S.aureus which binds IgG molecules by their Fc region (PMID: 4163007). Engineered Protein A has been widely used in antibody purification due to its Fc binding property. However, trace of protein A might be leaked from purification resin thus causes contamination of final products. Antibody against Protein A or ELISA kits for Protein A could be used to evaluate leaking level of Protein A from resin. Protein A should be deactivated (e.g. boiling in 5-10% tween-20) before testing.

Publications notables

Autrice	Pubmed ID	Journal	Application
Katsutoshi Yoshizato	35792074	J Biochem	
Qian Wang	17467839	Virus Res	IP

Stockage

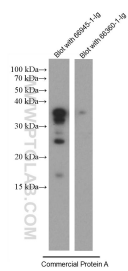
Stockage:
Stocker à -20°C. Stable pendant un an après l'expédition.
Tampon de stockage:
PBS avec azoture de sodium à 0,02 % et glycérol à 50 % pH 7,3
L'aliquotage n'est pas nécessaire pour le stockage à -20C

*** Les 20ul contiennent 0,1% de BSA.

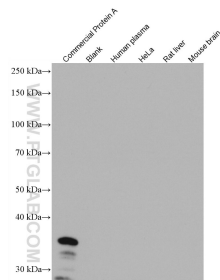
For technical support and original validation data for this product please contact:
T: 1 (888) 4PTGLAB (1-888-478-4522) (toll free in USA), or 1(312) 455-8498 (outside USA)
E: proteintech@ptglab.com
W: ptglab.com

This product is exclusively available under Proteintech Group brand and is not available to purchase from any other manufacturer.

Données de validation sélectionnées



Commercial Protein A was deactivated and lysed followed by SDS-PAGE and then blot with 66945-1-Ig (Protein A antibody) at dilution of 1:10000 and isotype control antibody 66360-1-Ig at 1:2000 incubated at room temperature for 1.5 hours.



Commercial Protein A and negative samples (human plasma, HeLa cells, rat liver, mouse brain) were subjected to SDS-PAGE followed by western blot with 66945-1-Ig (Protein A antibody) at dilution of 1:10000 incubated at room temperature for 1.5 hours.