

À des fins de recherche uniquement

Anticorps Monoclonal anti-14-3-3E

Numéro de catalogue: 66946-1-Ig **2 Publications**



Informations de base

Numéro de catalogue: 66946-1-Ig	Numéro d'acquisition GenBank: BC000179	Méthode de purification: Purification par protéine A
Taille: 150ul , Concentration: 2200 µg/ml by Nanodrop and 1000 µg/ml by Bradford method using BSA as the standard;	Identification du gène (NCBI): 7531	CloneNo.: 3A3A4
Hôte: Mouse	Nom complet: tyrosine 3-monooxygenase/tryptophan 5-monooxygenase activation protein, epsilon polypeptide	Dilutions recommandées: WB 1:5000-1:50000
Isotype: IgG2b	MW calculé 255 aa, 29 kDa	
Immunogen Catalog Number: AG25186	MW observés: 28-32 kDa	

Applications

Applications testées:

WB, ELISA

Demandes citées:

WB

Spécificité de l'espèce:

Humain, rat, souris

Espèces citées:

Humain, souris

Contrôles positifs:

WB : cellules HeLa, cellules HEK-293, cellules HSC-T6, cellules Jurkat, cellules MCF-7, cellules NIH/3T3, cellules RAW 264.7

Informations générales

14-3-3 epsilon (also known as YWHAE) is a member of 14-3-3 proteins which were the first phosphoserine/phosphothreonine-binding proteins to be discovered. 14-3-3 family members interact with a wide spectrum of proteins and possess diverse functions. Mammals express seven distinct 14-3-3 isoforms (gamma, epsilon, beta, zeta, sigma, theta, tau) that form multiple homo- and hetero- dimers. 14-3-3 proteins display the highest expression levels in the brain, and have been implicated in several neurodegenerative diseases, including Alzheimer's disease and amyotrophic lateral sclerosis.

Publications notables

Autrice	Pubmed ID	Journal	Application
Jiafu Zhao	32801901	Cancer Manag Res	WB
Jiafu Zhao	35928803	Oncol Lett	

Stockage

Stockage:

Stocker à -20°C. Stable pendant un an après l'expédition.

Tampon de stockage:

PBS avec azoture de sodium à 0,02 % et glycérol à 50 % pH 7,3

L'aliquotage n'est pas nécessaire pour le stockage à -20C

*** Les 20ul contiennent 0,1% de BSA.

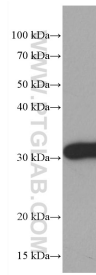
For technical support and original validation data for this product please contact:

T: 1 (888) 4PTGLAB (1-888-478-4522) (toll free in USA), or 1(312) 455-8498 (outside USA)

E: proteintech@ptglab.com
W: ptglab.com

This product is exclusively available under Proteintech Group brand and is not available to purchase from any other manufacturer.

Données de validation sélectionnées



HeLa cells were subjected to SDS PAGE followed by western blot with 66946-1-Ig (14-3-3E antibody) at dilution of 1:20000 incubated at room temperature for 1.5 hours.