

À des fins de recherche uniquement

Anticorps Monoclonal anti-DBR1

Numéro de catalogue: 66951-1-Ig Phare



Informations de base

Numéro de catalogue: 66951-1-Ig	Numéro d'acquisition GenBank: BC009472	Méthode de purification: Purification par protéine A
Taille: 150ul , Concentration: 2100 µg/ml by Nanodrop and 1000 µg/ml by Bradford method using BSA as the standard;	Identification du gène (NCBI): 51163	CloneNo.: 3B5A7
Hôte: Mouse	Nom complet: debranching enzyme homolog 1 (S. cerevisiae)	Dilutions recommandées: WB 1:5000-1:50000 IHC 1:250-1:1000 IF 1:200-1:800
Isotype: IgG2b	MW calculé: 544 aa, 62 kDa	
Immunogen Catalog Number: AG8830	MW observés: 70-80 kDa	

Applications

Applications testées:

IF, IHC, WB, ELISA

Spécificité de l'espèce:

Humain, porc, rat, souris

Remarque-IHC: il est suggéré de démasquer l'antigène avec un tampon de TE buffer pH 9.0; (*) À défaut, le démasquage de l'antigène peut être effectué avec un tampon citrate pH 6,0.

Contrôles positifs:

WB : tissu cérébral humain, cellules HeLa, cellules HepG2, cellules MCF-7, tissu cérébral de porc, tissu cérébral de rat, tissu cérébral de souris, tissu cérébral humain foetal

IHC : tissu cérébral de souris,

IF : cellules A431,

Informations générales

DBR1(Lariat debranching enzyme) hydrolyzes 2-prime-to-5-prime branched phosphodiester bonds at the branch point of excised lariat intron RNA and converts them into linear molecules. DBR1 belongs to the lariat debranching enzyme family. Inhibitor of Dbr1 can suppress TDP-43 toxicity in primary neurons, suggesting that Dbr1 could be a potential therapeutic target for ALS and related TDP-43 proteinopathies (PMID: 23104007). This protein has 2 isoforms produced by alternative splicing.

Stockage

Stockage:

Stocker à -20°C. Stable pendant un an après l'expédition.

Tampon de stockage:

PBS avec azoture de sodium à 0,02 % et glycérol à 50 % pH 7,3

L'aliquotage n'est pas nécessaire pour le stockage à -20C

*** Les 20ul contiennent 0,1% de BSA.

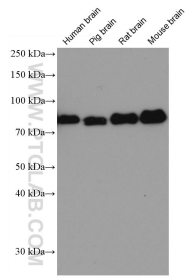
For technical support and original validation data for this product please contact:

T: 1 (888) 4PTGLAB (1-888-478-4522) (toll free in USA), or 1(312) 455-8498 (outside USA)

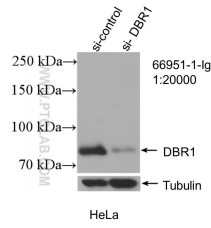
E: proteintech@ptglab.com
W: ptglab.com

This product is exclusively available under Proteintech Group brand and is not available to purchase from any other manufacturer.

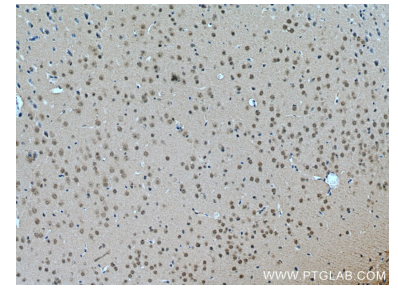
Données de validation sélectionnées



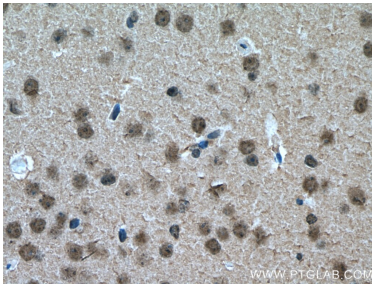
Various lysates were subjected to SDS PAGE followed by western blot with 66951-1-Ig (DBR1 antibody) at dilution of 1:20000 incubated at room temperature for 1.5 hours.



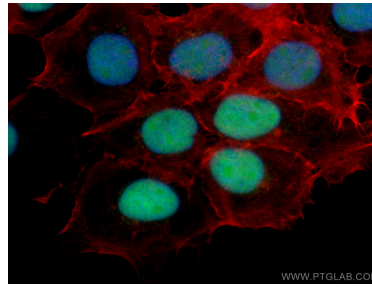
WB result of DBR1 antibody (66951-1-Ig; 1:20000; incubated at room temperature for 1.5 hours) with sh-Control and sh-DBR1 transfected HeLa cells.



Immunohistochemical analysis of paraffin-embedded mouse brain tissue slide using 66951-1-Ig (DBR1 antibody) at dilution of 1:500 (under 10x lens). Heat mediated antigen retrieval with Tris-EDTA buffer (pH 9.0).



Immunohistochemical analysis of paraffin-embedded mouse brain tissue slide using 66951-1-Ig (DBR1 antibody) at dilution of 1:500 (under 40x lens). Heat mediated antigen retrieval with Tris-EDTA buffer (pH 9.0).



Immunofluorescent analysis of (4% PFA) fixed A431 cells using DBR1 antibody (66951-1-Ig, Clone: 3B5A7) at dilution of 1:400 and CoraLite® 488-Conjugated AffiniPure Goat Anti-Mouse IgG(H+L), CL594-Phalloidin (red).