

À des fins de recherche uniquement

# Anticorps Monoclonal anti-LXN

Numéro de catalogue: 66957-1-Ig



## Informations de base

Numéro de catalogue: 66957-1-Ig	Numéro d'acquisition GenBank: BC005346	Méthode de purification: Purification par protéine G
Taille: 150ul, Concentration: 1800 µg/ml by Nanodrop and 1000 µg/ml by Bradford method using BSA as the standard;	Identification du gène (NCBI): 56925	CloneNo.: 3E5A5
Hôte: Mouse	Nom complet: latexin	Dilutions recommandées: WB 1:2000-1:10000 IHC 1:250-1:1000 IF 1:400-1:1600
Isotype: IgG1	MW calculé: 222 aa, 26 kDa	
Immunogen Catalog Number: AG27922	MW observés: 30 kDa	

## Applications

Applications testées:  
FC, IF, IHC, WB, ELISA

Spécificité de l'espèce:  
Humain, Lapin, porc

**Remarque-IHC: il est suggéré de démasquer l'antigène avec un tampon de TE buffer pH 9.0; (\*) À défaut, le démasquage de l'antigène peut être effectué avec un tampon citrate pH 6,0.**

Contrôles positifs:

WB : tissu cérébral de porc, cellules A549, cellules HEK-293, cellules HeLa, cellules SH-SY5Y, tissu cérébral de lapin

IHC : tissu cardiaque humain,

IF : cellules HeLa,

## Informations générales

Latexin, also named as LTXN, LXN, ECI, MUM and TCI, is hardly reversible, non-competitive, and potent inhibitor of CPA1, CPA2 and CPA4. It may function as a neuroprotective mechanism against tau toxicity.

## Stockage

Stockage:

Stocker à -20°C. Stable pendant un an après l'expédition.

Tampon de stockage:

PBS avec azoture de sodium à 0,02 % et glycérol à 50 % pH 7,3

L'aliquotage n'est pas nécessaire pour le stockage à -20C

\*\*\* Les 20ul contiennent 0,1% de BSA.

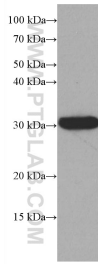
For technical support and original validation data for this product please contact:

T: 1 (888) 4PTGLAB (1-888-478-4522) (toll free  
in USA), or 1(312) 455-8498 (outside USA)

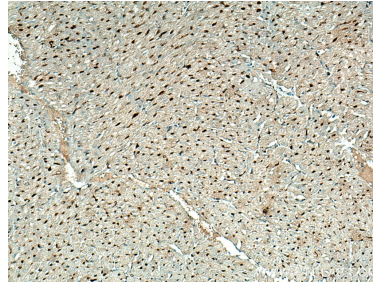
E: proteintech@ptglab.com  
W: ptglab.com

This product is exclusively available under Proteintech Group brand and is not available to purchase from any other manufacturer.

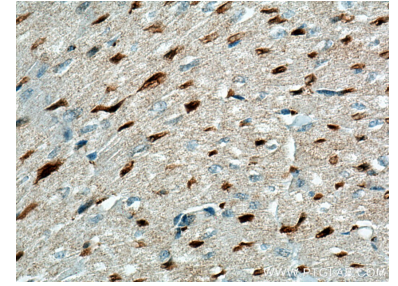
## Données de validation sélectionnées



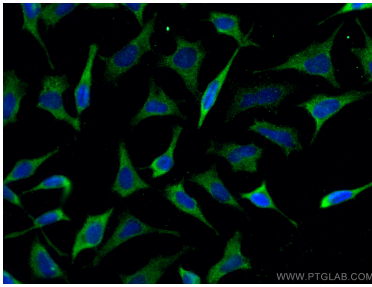
pig brain tissue were subjected to SDS PAGE followed by western blot with 66957-1-Ig (LXN antibody) at dilution of 1:5000 incubated at room temperature for 1.5 hours.



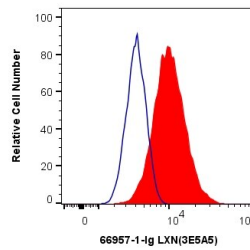
Immunohistochemical analysis of paraffin-embedded human heart tissue slide using 66957-1-Ig (LXN antibody) at dilution of 1:500 (under 10x lens). Heat mediated antigen retrieval with Tris-EDTA buffer (pH 9.0).



Immunohistochemical analysis of paraffin-embedded human heart tissue slide using 66957-1-Ig (LXN antibody) at dilution of 1:500 (under 40x lens). Heat mediated antigen retrieval with Tris-EDTA buffer (pH 9.0).



Immunofluorescent analysis of (-20°C Methanol) fixed HeLa cells using LXN antibody (66957-1-Ig, Clone: 3E5A5) at dilution of 1:800 and CoraLite@488-Conjugated AffiniPure Goat Anti-Mouse IgG(H+L).



1X10<sup>6</sup> HeLa cells were intracellularly stained with 0.4 ug Anti-Human LXN (66957-1-Ig, Clone:3E5A5) and CoraLite@488-Conjugated AffiniPure Goat Anti-Mouse IgG(H+L) at dilution 1:1000 (red), or 0.4 ug Mouse IgG1 Isotype Control (MOPC-21) (65124-1-Ig, Clone: MOPC-21) (blue). Cells were fixed with 4% PFA and permeabilized with Flow Cytometry Perm Buffer (PF00011-C).