

À des fins de recherche uniquement

# Anticorps Monoclonal anti-DOCK2

Numéro de catalogue: 66969-1-Ig

Phare

1 Publications



## Informations de base

<b>Numéro de catalogue:</b> 66969-1-Ig	<b>Numéro d'acquisition GenBank:</b> BC016996	<b>Méthode de purification:</b> Purification par protéine G
<b>Taille:</b> 150ul, Concentration: 2000 µg/ml by Nanodrop and 1000 µg/ml by Bradford method using BSA as the standard;	<b>Identification du gène (NCBI):</b> 1794	<b>CloneNo.:</b> 1D7A8
<b>Hôte:</b> Mouse	<b>Nom complet:</b> dedicator of cytokinesis 2	<b>Dilutions recommandées:</b> WB 1:5000-1:50000 IHC 1:1000-1:4000 IF 1:200-1:800
<b>Isotype:</b> IgG1	<b>MW calculé:</b> 212 kDa, 38 kDa	
<b>Immunogen Catalog Number:</b> AG28582	<b>MW observés:</b> 200-210 kDa	

## Applications

### Applications testées:

IF, IHC, WB, ELISA

### Demandes citées:

WB

### Spécificité de l'espèce:

Humain

### Espèces citées:

Humain

**Remarque-IHC: il est suggéré de démasquer l'antigène avec un tampon de TE buffer pH 9,0; (\*) A défaut, le démasquage de l'antigène peut être effectué avec un tampon citrate pH 6,0.**

### Contrôles positifs:

WB : cellules Jurkat, cellules HeLa, cellules Ramos

IHC : tissu de cancer du foie humain,

IF : cellules HeLa,

## Informations générales

DOCK2, also named as KIAA0209, belongs to the DOCK family. It is involved in cytoskeletal rearrangements required for lymphocyte migration in response of chemokines. DOCK2 activates RAC1 and RAC2 small GTPases, probably by functioning as a guanine nucleotide exchange factor (GEF), which exchanges bound GDP for free GTP. DOCK2 may also participate in IL2 transcriptional activation via the activation of RAC2. The antibody is specific to DOCK2.

## Publications notables

Autrice	Pubmed ID	Journal	Application
Mengqi Chu	33509274	Stem Cell Res Ther	WB

## Stockage

### Stockage:

Stocker à -20°C. Stable pendant un an après l'expédition.

### Tampon de stockage:

PBS avec azoture de sodium à 0,02 % et glycérol à 50 % pH 7,3

L'aliquotage n'est pas nécessaire pour le stockage à -20C

\*\*\* Les 20ul contiennent 0,1% de BSA.

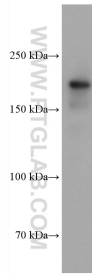
For technical support and original validation data for this product please contact:

T: 1 (888) 4PTGLAB (1-888-478-4522) (toll free in USA), or 1(312) 455-8498 (outside USA)

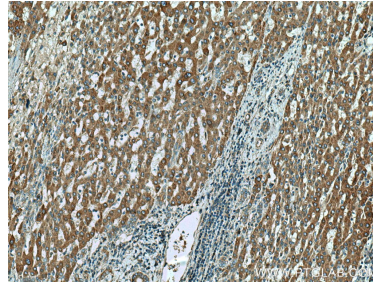
E: proteintech@ptglab.com  
W: ptglab.com

This product is exclusively available under Proteintech Group brand and is not available to purchase from any other manufacturer.

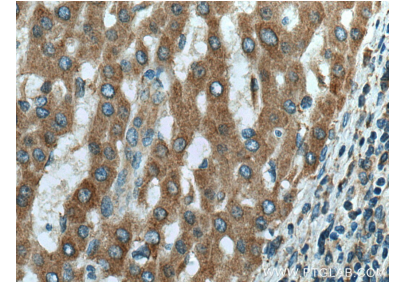
## Données de validation sélectionnées



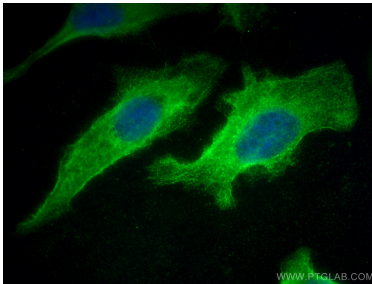
Jurkat cells were subjected to SDS PAGE followed by western blot with 66969-1-Ig (DOCK2 antibody) at dilution of 1:20000 incubated at room temperature for 1.5 hours.



Immunohistochemical analysis of paraffin-embedded human liver cancer tissue slide using 66969-1-Ig (DOCK2 antibody) at dilution of 1:2000 (under 10x lens). Heat mediated antigen retrieval with Tris-EDTA buffer (pH 9.0).



Immunohistochemical analysis of paraffin-embedded human liver cancer tissue slide using 66969-1-Ig (DOCK2 antibody) at dilution of 1:2000 (under 40x lens). Heat mediated antigen retrieval with Tris-EDTA buffer (pH 9.0).



Immunofluorescent analysis of (-20°C Methanol) fixed HeLa cells using DOCK2 antibody (66969-1-Ig, Clone: 1D7A8 ) at dilution of 1:400 and CoraLite®488-Conjugated AffiniPure Goat Anti-Mouse IgG(H+L).