

À des fins de recherche uniquement

Anticorps Monoclonal anti-EPHX1

Numéro de catalogue: 66982-1-Ig **Phare**



Informations de base

Numéro de catalogue: 66982-1-Ig	Numéro d'acquisition GenBank: BC003567	Méthode de purification: Purification par protéine A
Taille: 150ul , Concentration: 1500 µg/ml by Nanodrop and 1000 µg/ml by Bradford method using BSA as the standard;	Identification du gène (NCBI): 2052	CloneNo.: 1B6A2
Hôte: Mouse	Nom complet: epoxide hydrolase 1, microsomal (xenobiotic)	Dilutions recommandées: WB 1:5000-1:50000
Isotype: IgG2b	MW calculé 53 kDa	
Immunogen Catalog Number: AG25820	MW observés: 53 kDa	

Applications

Applications testées: WB, ELISA	Contrôles positifs: WB : cellules HeLa, cellules 4T1, cellules A549, cellules HepG2, cellules L02, cellules NCI-H1299
Spécificité de l'espèce: Humain, souris	

Informations générales

EPHX1, also known as EPHX and EPOX, belongs to the peptidase S33 family. EPHX1 is an evolutionarily highly conserved biotransformation enzyme expressed in nearly all tissues and localized mainly in the microsomal fraction of the endoplasmic reticulum of eukaryotic cells. EPHX1 plays a role in the metabolism of endogenous lipids such as epoxide-containing fatty acids. The calculated molecular weight of EPHX1 is 53 kDa (PMID: 26216302).

Stockage

Stockage:
Stocker à -20°C. Stable pendant un an après l'expédition.
Tampon de stockage:
PBS avec azoture de sodium à 0,1 % et glycérol à 50 % pH 7,3
L'aliquotage n'est pas nécessaire pour le stockage à -20C

***** Les 20ul contiennent 0,1% de BSA.**

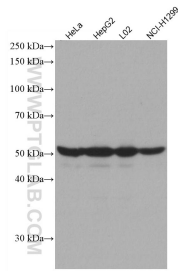
For technical support and original validation data for this product please contact:

T: 1 (888) 4PTGLAB (1-888-478-4522) (toll free
in USA), or 1(312) 455-8498 (outside USA)

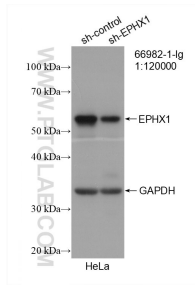
E: proteintech@ptglab.com
W: ptglab.com

This product is exclusively available under Proteintech Group brand and is not available to purchase from any other manufacturer.

Données de validation sélectionnées



Various lysates were subjected to SDS PAGE followed by western blot with 66982-1-Ig (EPHX1 antibody) at dilution of 1:10000 incubated at room temperature for 1.5 hours.



WB result of EPHX1 antibody (66982-1-Ig; 1:120000; incubated at room temperature for 1.5 hours) with sh-Control and sh-EPHX1 transfected HeLa cells.