

À des fins de recherche uniquement

# Anticorps Monoclonal anti-CTBP1

Numéro de catalogue: 66995-1-Ig



## Informations de base

<b>Numéro de catalogue:</b> 66995-1-Ig	<b>Numéro d'acquisition GenBank:</b> BC011655	<b>Méthode de purification:</b> Purification par protéine A
<b>Taille:</b> 150ul, Concentration: 2300 µg/ml by Nanodrop and 1000 µg/ml by Bradford method using BSA as the standard;	<b>Identification du gène (NCBI):</b> 1487	<b>CloneNo.:</b> 1C4B2
<b>Hôte:</b> Mouse	<b>Nom complet:</b> C-terminal binding protein 1	<b>Dilutions recommandées:</b> WB 1:5000-1:50000 IHC 1:1000-1:4000 IF 1:2000-1:8000
<b>Isotype:</b> IgG1	<b>MW calculé:</b> 48 kDa	
<b>Immunogen Catalog Number:</b> AG28567	<b>MW observés:</b> 45-48 kDa	

## Applications

**Applications testées:**  
FC, IF, IHC, WB, ELISA

**Spécificité de l'espèce:**  
Humain, rat, souris

**Remarque-IHC: il est suggéré de démasquer l'antigène avec un tampon de TE buffer pH 9,0; (\*) À défaut, 'le démasquage de l'antigène peut être effectué avec un tampon citrate pH 6,0.**

**Contrôles positifs:**

**WB :** cellules MCF-7, cellules 4T1, cellules A549, cellules HEK-293, cellules HeLa, cellules HL-60, cellules HSC-T6, cellules Jurkat, cellules LNCaP, cellules NCCIT, cellules NIH/3T3, cellules RAW 264.7

**IHC :** tissu de cancer du sein humain, tissu de cancer de la prostate humain

**IF :** cellules HepG2,

## Informations générales

CTBP1, also named as C-terminal-binding protein 1, is a 440 amino acid protein, which belongs to the D-isomer specific 2-hydroxyacid dehydrogenase family. CTBP1 is a cellular phosphoprotein that associates with various proteins and functions as a corepressor of transcription. CTBP1 and the related protein CTBP2 are characterized as C-terminal binding protein of adenovirus E1A, and they preferentially associate with the E1A via a 5-amino acid motif, PLDLS, to repress E1A induced oncogenesis and cellular transformation. CTBP1 is expressed from embryo to adult, but CTBP2 is mainly expressed during embryogenesis.

## Stockage

**Stockage:**  
Stocker à -20°C. Stable pendant un an après l'expédition.  
**Tampon de stockage:**  
PBS avec azoture de sodium à 0,02 % et glycérol à 50 % pH 7,3  
L'aliquotage n'est pas nécessaire pour le stockage à -20C

\*\*\* Les 20ul contiennent 0,1% de BSA.

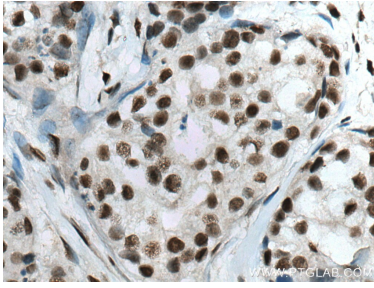
For technical support and original validation data for this product please contact:

T: 1 (888) 4PTGLAB (1-888-478-4522) (toll free in USA), or 1(312) 455-8498 (outside USA)

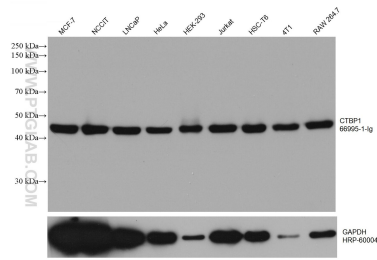
E: [proteintech@ptglab.com](mailto:proteintech@ptglab.com)  
W: [ptglab.com](http://ptglab.com)

This product is exclusively available under Proteintech Group brand and is not available to purchase from any other manufacturer.

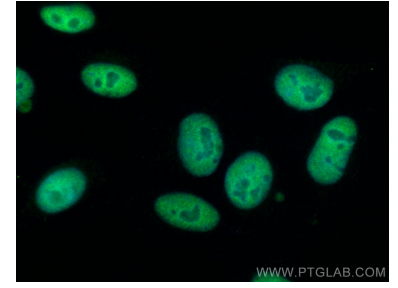
## Données de validation sélectionnées



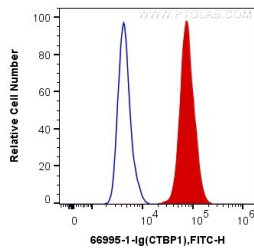
Immunohistochemical analysis of paraffin-embedded human breast cancer tissue slide using 66995-1-Ig (CTBP1 antibody) at dilution of 1:2000 (under 40x lens). Heat mediated antigen retrieval with Tris-EDTA buffer (pH 9.0).



Various lysates were subjected to SDS PAGE followed by western blot with 66995-1-Ig (CTBP1 antibody) at dilution of 1:20000 incubated at room temperature for 1.5 hours. The membrane was stripped and reblotted with HRP-conjugated GAPDH Monoclonal antibody (HRP-60004) as loading control.



Immunofluorescent analysis of (4% PFA) fixed HepG2 cells using CTBP1 antibody (66995-1-Ig, Clone: 1C4B2 ) at dilution of 1:4000 and CoraLite®488-Conjugated AffiniPure Goat Anti-Mouse IgG(H+L).



1X10<sup>6</sup> HepG2 cells were intracellularly stained with 0.2 ug Anti-Human CTBP1 (66995-1-Ig, Clone:1C4B2) and CoraLite®488-Conjugated AffiniPure Goat Anti-Mouse IgG(H+L) at dilution 1:1000 (red), or 0.2 ug Mouse IgG1 Isotype Control (66360-1-Ig, Clone: T1F8D3F10) (blue). Cells were fixed and permeabilized with Transcription Factor Staining Buffer Kit (PF00011).